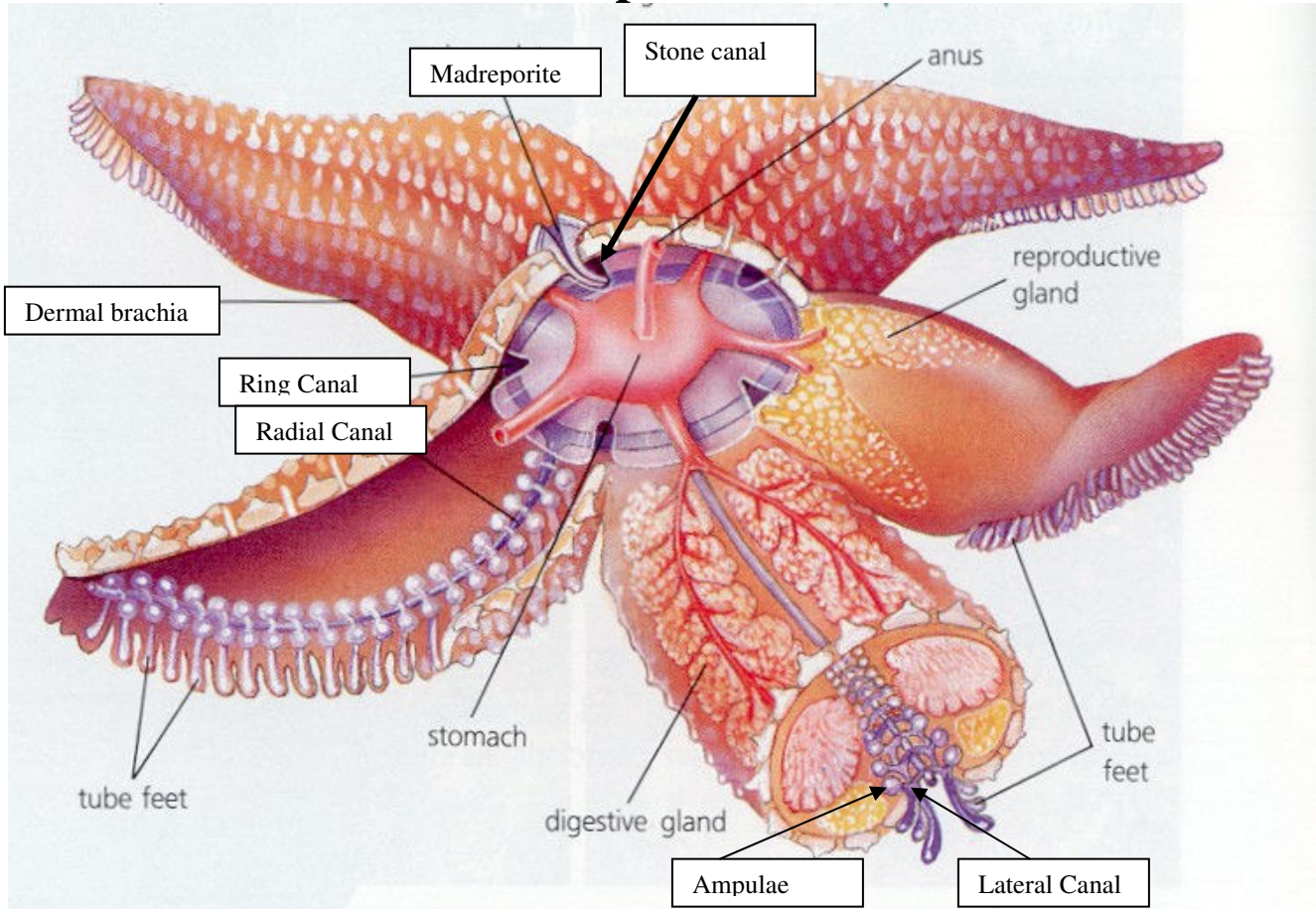


Starfish Dissection Lab 75 points



1. Follow the directions for the dissection as given in the dissection guide.
 - a. Basic steps include:
 - i. Examine external aboral (dorsal) structures
 - ii. Examine external oral (ventral) structures
 - iii. Sever arm near central disc and examine
 1. Cut along lateral sides & then along dorsal surface of the severed arm , remove skeleton to observe pyloric ceca & gonads
 - iv. Cut laterally around the central disk (without removing the madreporite) and remove small pieces of the dorsal disk surface to expose the internal structures
 - v. Observe the parts of the digestive system & reproductive systems
 - vi. Gently remove digestive system & reproductive systems and observe an intact water vascular system.
2. **Drawing # 1: Draw and label** external whole specimen dorsal view of your critter labeling the following:
 - a. Madreporite
 - b. Rays (arms)
 - c. Central disc
 - d. Dorsal spines
 - e. Eye spots
 - f. Dermal Brachea

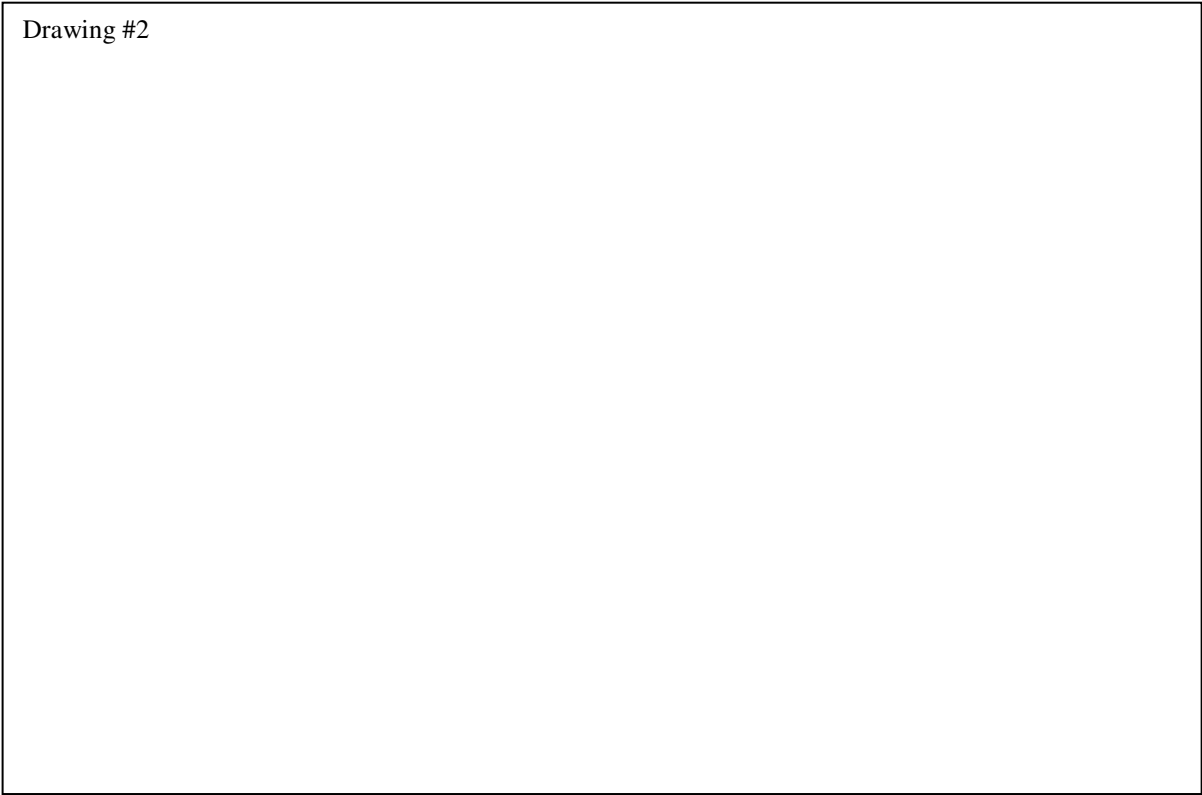
Name: _____ Date: _____

3. **Drawing # 2: Draw and label:** the external ventral side of your specimen, include the following:
 - a. Mouth
 - b. Ambulacral grooves
 - c. Tube feet
 - d. Eyespot
4. **Drawing #3: Draw and label:** all parts of the water vascular system
 - a. Madreporite
 - b. stone canal
 - c. Ring canal
 - d. Radial Canals
 - e. Lateral canals
 - f. ampullae
 - g. Tube Feet
5. **Drawing #4: Draw and label** the cross section of the arm
 - a. Spine
 - b. Pyloric Cecum
 - c. Tube Feet
 - d. Ossicles
 - e. Gonads
 - f. Dermal brachia
 - g. Radial Canal
6. Be able to identify the parts of the digestive, water vascular and reproductive systems as laid out in the dissection guide.
 - a. Digestive system:
 - i. Mouth – cardiac stomach – pyloric stomach – anus & pyloric cecum
 - b. Water Vascular System:
 - i. Madreporite – stone canal – ring canal – radial canal – lateral canal – ampulla – tube feet
 - c. Reproductive System
 - i. Gonads

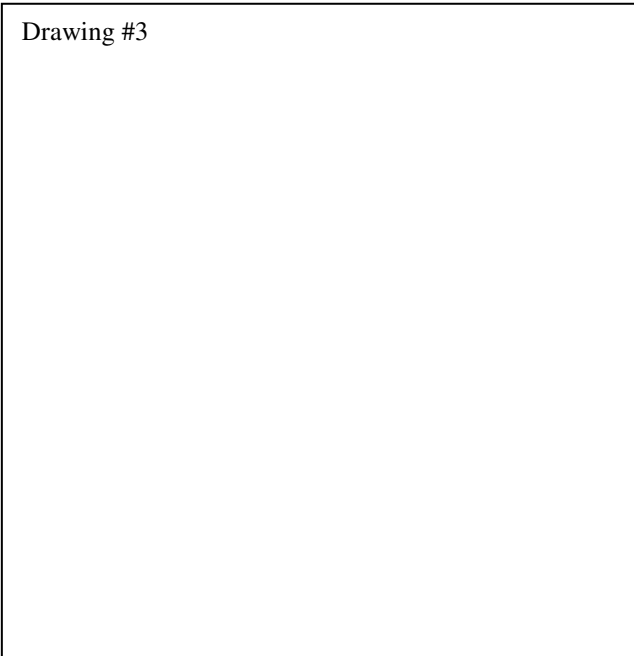
Drawing #1

Name: _____ Date: _____

Drawing #2



Drawing #3



Drawing #4

