The graphic features a central orange five-pointed star. Behind the star, a sunburst pattern of alternating yellow and red rays radiates from the top. The background is split horizontally: the top half is red and the bottom half is dark blue. The text is in a gold, serif font with a slight shadow effect.

Prescott Area  
Community Asset Inventory

2009



This report was prepared by the Arizona Rural Policy Institute, Northern Arizona University, partially funded under award #07-66-05876 from the Economic Development Administration, U.S. Department of Commerce. The statements, findings, conclusions, and recommendations are those of the authors and do not necessarily reflect the views of the Economic Development Administration or the U.S. Department of Commerce.

The Arizona Rural Policy Institute is also funded by the City of Flagstaff, Coconino County, and the Office of the President, Northern Arizona University

## Credits

Prepared and compiled by the Arizona Hospitality Research & Resource Center, Cheryl Cothran, Director  
 For the Arizona Rural Policy Institute, Tom Combrink, Director  
 Center for Business Outreach  
 The W.A. Franke College of Business  
 Northern Arizona University  
 Flagstaff, AZ 86011

## Websites

Arizona Hospitality Research & Resource Center: <http://home.nau.edu/ahrrc/>  
 Arizona Rural Policy Institute: <http://www.franke.nau.edu/RPI/>  
 Center for Business Outreach: <http://www.franke.nau.edu/businessoutreach/>  
 The W.A. Franke College of Business: <http://www.franke.nau.edu/>

## Researchers

Name	Title	Phone	E-Mail Address
<b>Wendy Bridges</b>	Economic Development Specialist, City of Prescott	(928) 777-1204	wendy.bridges@prescott-az.gov
<b>Greg Fister</b>	Economic Development Director, Town of Prescott Valley	(928) 759-3106	gfister@pvaz.net
<b>Ab Jackson</b>	CEO, Chino Valley Area Chamber of Commerce	(928) 636-2493	ab@chinovalley.org
<b>William Emerson</b>	Town Manager, Dewey-Humboldt	(928) 632-7362	williamemerson@dhaz.gov

## Document Layout

Jason Karcz, Support Systems Analyst Sr., AHRRRC, CBO, NAU

**Table of Contents**

Credits .....	3	Propane / Natural Gas .....	17	Home Sales .....	35
Introduction .....	5	Water .....	18	Medical Services .....	37
Population .....	6	City Boundaries.....	19	Hospitals .....	37
Sub-County Estimates .....	6	Prescott.....	19	Other Centers, Specialists, Associations, and	
Labor Force .....	6	Prescott Valley .....	20	Clinics.....	37
Employment/Unemployment (2008).....	6	Chino Valley .....	21	Medical Provider Specialties .....	39
Unemployment Rate % .....	6	Dewey-Humboldt.....	22	Crime .....	40
Labor Force by Occupation (2008).....	7	Distances from Major Markets .....	23	Occurrences of Crimes .....	40
Labor Force by Industry (2008) .....	8	Radius Map .....	23	Top Annual Events.....	41
Age Distribution (2008).....	9	Cellular Phone Service .....	24	Prescott .....	41
Race Distribution (2008) .....	10	Airports .....	24	Prescott Valley.....	42
Hispanic as a portion of total population		Express Shipping Providers.....	25	Chino Valley.....	42
(2008) .....	10	UPS.....	25	Dewey-Humboldt .....	42
Educational Attainment (2008).....	10	Federal Express.....	26	Cultural Amenities.....	42
Household Income (2008).....	11	USPS.....	27	Parks/Lakes.....	42
Major Public Employers .....	12	Taxes .....	28	Trails .....	42
Major Private Employers.....	12	Arizona Personal Income Tax Rates.....	28	Entertainment .....	43
Public Schools.....	13	Corporate Income Tax .....	28	Golf Courses .....	43
Prescott .....	13	Unemployment Insurance .....	28	Museums .....	43
Prescott Valley .....	13	Arizona Worker's Compensation.....	28	Theaters.....	43
Chino Valley .....	13	Sales and Use Tax Rates.....	28	Libraries .....	44
Dewey-Humboldt.....	14	Property Tax Rates (2008) .....	28	Agricultural Information.....	45
Private/Charter Schools .....	14	Banks and Credit Unions.....	29	Conference Facilities .....	45
Prescott .....	14	Prescott.....	29	Lodging Properties.....	46
Prescott Valley .....	14	Prescott Valley .....	30	Total Numbers .....	46
Chino Valley .....	15	Chino Valley .....	30	Prescott .....	46
Vocational Schools .....	15	Dewey-Humboldt.....	30	Prescott Valley.....	48
Other Schools.....	15	Industrial Development Authority.....	31	Chino Valley.....	48
Prescott .....	15	Weather .....	32	Dewey-Humboldt .....	48
Prescott Valley .....	15	Arizona Annual Precipitation .....	33	RV Parks.....	49
Chino Valley .....	16	Rainfall / Snowfall / Elevation.....	34	Campgrounds .....	50
Electricity.....	16	Real Estate .....	34	Restaurants.....	51
Sewer .....	16	Average Home Values.....	34		
Septic.....	16	Average Monthly Rental (Apartments) .....	34		

## **Introduction**

---

The Prescott area includes the following communities: City of Prescott, Town of Prescott Valley, Town of Chino Valley and Town of Dewey-Humboldt. Located in central Arizona, these communities boast excellent highway access and a thriving business environment.

The diverse topography, comprised of forestlands, mountains, open ranges, high deserts, valleys and natural rock formations, as well as lakes, rivers and streams, lends itself to a wide variety of outdoor recreation.

Our area draws visitors from all over the world to enjoy our unique setting, old-west history and enjoyable climate. Throughout the year these communities offer a variety of events and activities so that no matter when you visit, you'll get a chance to experience the many faces of the area and find out for yourself why the Prescott area is considered one of the top emerging metropolitans.

## Population

Note: all calculations are based on ESRI Census Defined Place Data proportions applied to July 1, 2008 Arizona Department of Commerce population estimates

### Sub-County Estimates

	Prescott	Prescott Valley	Chino Valley	Dewey/Humboldt
<b>2008</b>	43,280	38,962	13,069	4,444

Source: Arizona Subcounty population projections distributed by ESRI Census Defined Place Data proportions

### Labor Force

	Prescott	Prescott Valley	Chino Valley	Dewey/Humboldt
<b>2008</b>	18,177	16,698	5,898	1,682

Source: Arizona Subcounty population projections distributed by ESRI Census Defined Place Data proportions

### Employment/Unemployment (2008)

	Prescott	Prescott Valley	Chino Valley	Dewey/Humboldt
<b>Employment</b>	17,277	15,755	5,536	1,600
<b>Unemployment</b>	900	944	362	81

Source: Arizona Subcounty population projections distributed by ESRI Census Defined Place Data proportions

### Unemployment Rate %

	Prescott	Prescott Valley	Chino Valley	Dewey/Humboldt
<b>2008</b>	3.0%	4.3%	3.5%	3.2%

Source: Arizona Subcounty population projections distributed by ESRI Census Defined Place Data proportions

**Population**

**Labor Force by Occupation (2008)**

	Prescott	Prescott Valley	Chino Valley	Dewey/Humboldt
<b>Management including Farmers/Farm Mgrs</b>	1655	1316	529	186
<b>Business/Financial</b>	650	462	102	51
<b>Computer and Mathematical</b>	257	130	48	24
<b>Architecture/Engineering</b>	339	176	27	26
<b>Life/Physical/Social Science</b>	170	49	30	16
<b>Community/Social Services</b>	509	327	93	38
<b>Legal</b>	306	110	34	12
<b>Education/Training/Library</b>	1319	703	307	86
<b>Arts/Design/Entertainment/Sports/Media</b>	507	233	50	22
<b>Healthcare Practitioner/Technician</b>	1288	753	222	87
<b>Healthcare Support</b>	501	437	159	27
<b>Protective Service</b>	406	394	99	32
<b>Food Preparation/Serving Related</b>	1289	1125	346	91
<b>Building/Grounds Cleaning/Maintenance</b>	594	687	272	72
<b>Personal Care/Service</b>	735	612	307	71
<b>Sales/Related</b>	2200	2441	713	210
<b>Office/Administrative Support</b>	2049	2145	780	204
<b>Farming/Fishing/Forestry</b>	38	56	38	8
<b>Construction/Extraction</b>	1556	1968	718	171
<b>Installation/Maintenance/Repair</b>	442	610	298	75
<b>Production</b>	604	1023	294	73
<b>Transportation/Material Moving</b>	764	941	432	100

Source: Arizona Subcounty population projections distributed by ESRI Census Defined Place Data proportions

## Population

### Labor Force by Industry (2008)

	Prescott	Prescott Valley	Chino Valley	Dewey/Humboldt
<b>Agric/Forestry/Fishing/Hunting</b>	121	134	87	15
<b>Mining</b>	120	275	204	51
<b>Construction</b>	2252	2805	1042	275
<b>Manufacturing</b>	711	1045	329	119
<b>Wholesale Trade</b>	375	449	102	17
<b>Retail Trade</b>	2092	2589	811	214
<b>Transportation/Warehousing</b>	510	447	238	36
<b>Utilities</b>	62	79	67	12
<b>Information</b>	332	270	55	48
<b>Finance/Insurance</b>	666	486	148	40
<b>Real Estate/Rental/Leasing</b>	406	402	97	19
<b>Prof/Scientific/Tech Services</b>	1170	528	154	83
<b>Mgmt of Companies/Enterprises</b>	0	0	0	0
<b>Admin/Support/Waste Mgmt Srvc</b>	425	537	171	74
<b>Educational Services</b>	1996	1084	469	163
<b>Health Care/Social Assistance</b>	3079	2239	787	180
<b>Arts/Entertainment/Recreation</b>	455	337	104	43
<b>Accommodation/Food Services</b>	1560	1267	377	88
<b>Other Services (excl Publ Adm)</b>	950	952	428	130
<b>Public Administration</b>	896	774	228	73

Source: Arizona Subcounty population projections distributed by ESRI Census Defined Place Data proportions



## Population

### Age Distribution (2008)

	Prescott	Prescott Valley	Chino Valley	Dewey/Humboldt
<b>Under 5 Years</b>	1559	2745	858	154
<b>5-9 Years</b>	1560	2492	825	178
<b>10-14 Years</b>	1790	2545	929	242
<b>15-19 Years</b>	2344	2531	955	211
<b>20-24 Years</b>	2533	2300	712	143
<b>25-29 Years</b>	2097	2305	714	130
<b>30-34 Years</b>	1950	2092	674	129
<b>35-39 Years</b>	1769	2377	703	193
<b>40-44 Years</b>	2123	2552	918	226
<b>45-49 Years</b>	2839	2795	1013	285
<b>50-54 Years</b>	3198	2734	974	348
<b>55-59 Years</b>	3842	2529	950	426
<b>60-64 Years</b>	3596	2092	830	426
<b>65-69 Years</b>	3064	1816	659	398
<b>70-74 Years</b>	2631	1625	561	331
<b>75-79 Years</b>	2478	1446	380	279
<b>80-84 Years</b>	2029	1117	246	203
<b>85+ Years</b>	1878	870	169	140

Source: Arizona Subcounty population projections distributed by ESRI Census Defined Place Data proportions

## Population

### Race Distribution (2008)

	Prescott	Prescott Valley	Chino Valley	Dewey/Humboldt
<b>White</b>	39,858	34,844	12,107	4,212
<b>Black</b>	240	193	34	11
<b>American Indian/Alaska Native</b>	533	381	170	27
<b>Asian</b>	445	257	34	25
<b>Pacific Islander</b>	33	62	11	3
<b>Other Race</b>	1,403	2,248	420	106
<b>Multi Race (2 or more)</b>	769	978	292	60

Source: Arizona Subcounty population projections distributed by ESRI Census Defined Place Data proportions

### Hispanic as a portion of total population (2008)

	Prescott	Prescott Valley	Chino Valley	Dewey/Humboldt
<b>Hispanic</b>	4,274	5,278	1,739	316
<b>Hispanic % of total population</b>	10%	14%	13%	7%

Source: Arizona Subcounty population projections distributed by ESRI Census Defined Place Data proportions

### Educational Attainment (2008)

	Prescott	Prescott Valley	Chino Valley	Dewey/Humboldt
<b>Population 25+</b>	35123	26503	8802	3516
<b>Less than 9th Grade</b>	986	909	319	123
<b>9-12th Grade/No Diploma</b>	2068	2440	873	313
<b>High School Graduate</b>	8612	8583	3235	1117
<b>Some College/No Degree</b>	9542	7868	2306	1066
<b>Associate Degree</b>	2922	2179	691	305
<b>Bachelor`s Degree</b>	6403	2860	819	407
<b>Grad/Professional Degree</b>	4590	1663	560	185

Source: Arizona Subcounty population projections distributed by ESRI Census Defined Place Data proportions

## Population

### Household Income (2008)

	Prescott	Prescott Valley	Chino Valley	Dewey/Humboldt
Median	\$47,499	\$45,510	\$45,021	\$40,026
<50K	53%	56%	56%	51%
>50K	29%	34%	31%	35%
>100K	18%	10%	13%	14%

Source: Arizona Subcounty population projections distributed by ESRI Census Defined Place Data proportions

\*Median household income calculated from following table

	Prescott	Prescott Valley	Chino Valley	Dewey/Humboldt
<\$10000	1377	722	294	194
\$10000-\$14999	854	517	190	122
\$15000-\$19999	1161	796	205	203
\$20000-\$24999	1518	1258	377	375
\$25000-\$29999	949	658	230	221
\$30000-\$34999	1205	970	215	279
\$35000-\$39999	1106	1056	281	293
\$40000-\$44999	1018	914	244	265
\$45000-\$49999	1004	936	237	249
\$50000-\$59999	1745	1620	358	445
\$60000-\$74999	1835	1813	532	567
\$75000-\$99999	2069	1256	376	513
\$100000-\$124999	1139	688	241	221
\$125000-\$149999	921	337	131	131
\$150000-\$199999	584	194	82	102
\$200000-\$249999	283	86	36	63
\$250000-\$499999	397	122	38	82
\$500000+	89	30	8	19
<b>Total</b>	<b>19254</b>	<b>13974</b>	<b>4079</b>	<b>4344</b>

Source: Arizona Subcounty population projections distributed by ESRI Census Defined Place Data proportions

## Major Public Employers

---

### Prescott

- City of Prescott
- Prescott Unified School District
- State of Arizona
- VA Medical Center
- US Postal Service
- Yavapai County

### Prescott Valley

- Arizona Department of Economic Security
- Humboldt Unified School District
- Town of Prescott Valley

## Major Private Employers

---

### Prescott

- Fann Contracting
- Prescott Unified School District
- Wal-Mart
- Yavapai College
- Yavapai Gaming Agency
- Yavapai Regional Medical

### Prescott Valley

- Ace Hardware Retail Distribution Center
- Fry's Food Store
- Lockheed Martin
- MI Doors and Windows
- Mountain Valley Regional Rehabilitation Center
- Northcentral University
- Prescott Newspapers Inc.
- Printpak
- Yavapai Regional Medical Center (East Campus)

### Chino Valley

- Chino Valley Unified Schools
- Town of Chino Valley
- US Postal Service

### Dewey-Humboldt

- Humboldt Unified School District
- Town of Dewey-Humboldt

### Chino Valley

- Ace Hardware
- Charter Materials
- Hines Nursery
- Hunts Lumber
- Safeway

### Dewey-Humboldt

- Affinity RV Incorporated
- Arizona Public Service Company
- Gradys Quality Excavation Incorporated
- Mile High Archery Inc
- Olsen's Grain Incorporated
- Schuck-Sons Const Company Incorporated

**Public Schools**

**Prescott**

District	Name of School	Address	Phone	Enrollment	Grade Level
Prescott Unified School District	Abia Judd Elementary	1749 Williamson Valley Rd	(928) 717-3263	660	K-5 <sup>th</sup>
	Granite Mountain Middle	1800 Williamson Valley Rd	(928) 717-3253	600	6 <sup>th</sup> -8 <sup>th</sup>
	Lincoln Elementary	201 Park Avenue	(928) 717-3249	325	K-5 <sup>th</sup>
	Miller Valley	900 Iron Springs Rd.	(928) 717-3268	475	K-5 <sup>th</sup>
	Prescott High	1050 N. Ruth St.	(928) 445-2322	1880	9 <sup>th</sup> -12 <sup>th</sup>
	Prescott Mile High Middle	300 S. Granite St.	(928) 717-3241	665	6 <sup>th</sup> -8 <sup>th</sup>
	Taylor Hicks	1845 Campbell Ave.	(928) 717-3276	510	K-5 <sup>th</sup>
	Northpoint Expeditionary Learning Academy	551 First St.	(928) 717-3272	158	9 <sup>th</sup> -11 <sup>th</sup>
	Washington	300 E. Gurley St.	(928) 717-3281	350	K-6 <sup>th</sup>

**Prescott Valley**

District	Name of School	Address	Phone	Enrollment	Grade Level
Humboldt Unified School District	Granville Elementary	5250 Stover Dr.	(928) 759-4800	518	K-5 <sup>th</sup>
	Lake Valley Elementary	3900 N. Starlight Dr.	(928) 759-4200	483	K-5 <sup>th</sup>
	Coyote Springs Elementary	8101 E. Highway 89A	(928) 759-4300	670	K-5 <sup>th</sup>
	Liberty Elementary	3300 N. Lake Valley Rd.	(928) 759-4500	672	K-8 <sup>th</sup>
	Mountain View Elementary	8601 E. Loos Dr.	(928) 759-4700	557	K-5 <sup>th</sup>
	Glassford Hill Middle School	6901 Panther Path	(928) 759-4600	720	6 <sup>th</sup> -8 <sup>th</sup>
	Bradshaw Mountain Middle School	12255 Turquoise Circle	(928) 759-4900	611	6 <sup>th</sup> -8 <sup>th</sup>
	Bradshaw Mountain HS	6000 E. Long Look Dr.	(928) 759-4100	1,738	9 <sup>th</sup> -12 <sup>th</sup>
	Bradshaw Mt. HS East	6000 Long Look Dr.	(928) 759-5100	75	Misc.

**Chino Valley**

District	Name of School	Address	Phone	Enrollment	Grade Level
Chino Valley Unified Schools #51	CV High School	760 East Center Street	(928) 636-2298	800	9 <sup>th</sup> -12 <sup>th</sup>
	Heritage Middle School	1070 N. Road 1 West	(928) 636-4464	700	7 <sup>th</sup> -8 <sup>th</sup>
	Territorial Elementary School	1088 Mahan Lane	(928) 636-3842	580	K-6 <sup>th</sup>
	Del Rio School	1035 North Road 1 West	(928) 636-4414	600	

## Public Schools

### Dewey-Humboldt

District	Name of School	Address	Phone	Enrollment	Grade Level
Humboldt Unified	Humboldt Elementary	2750 S Corral St	(928) 759-4400	260	K-5 <sup>th</sup>

### Private/Charter Schools

#### Prescott

Name of School	Address	Phone	Enrollment	Grade Level
Aletheia Classical Charter School	137 N. Marina St.	(928) 778-2538	16	K-8 <sup>th</sup>
Ann Clare Learning Academy	551 First St.	(928) 925-1933	10	7 <sup>th</sup> -9 <sup>th</sup>
Excel Education Center	1040 Whipple St. #401	(928) 541-1401	83	9 <sup>th</sup> -12 <sup>th</sup>
Kestrel High	325 N. Washington Ave.	(928) 541-1090	96	9 <sup>th</sup> -12 <sup>th</sup>
Tri-city College Preparatory High	5522 Side Rd.	(928) 777-0403	198	9 <sup>th</sup> -12 <sup>th</sup>
Mountain Oak Charter	124 N. Virginia St.	(928) 541-7700	155	K-7 <sup>th</sup>
Willow Creek Charter	2100 Willow Creek Rd.	(928) 776-1212	115	K-8 <sup>th</sup>
Prescott Christian High	8245 Kelly Rd.	(928) 759-9495	15	9 <sup>th</sup> -12 <sup>th</sup>
Primavera	1410 Copper Basin Rd.	(928) 445-5382	103	K-6 <sup>th</sup>
Sacred Heart	131 N. Summit Ave.	(928) 445-2621	188	K-8 <sup>th</sup>
Skyview	125 S. Rush St.	(928) 776-1730	125	K-8 <sup>th</sup>
Tri-City Vocational/Technical High	2957 Highway 89	(928) 442-9125	51	9 <sup>th</sup> -12 <sup>th</sup>

#### Prescott Valley

Name of School	Address	Phone	Enrollment	Grade Level
Acorn Montessori	8556 E. Loos Rd.	(928) 772-5778	288	K-6 <sup>th</sup>
Franklin Phonetic	6116 Highway 69	(928) 775-6747	386	K-8 <sup>th</sup>
PACE Prep Academy	6287 E. Copper Hill Rd.	(928) 775-9675	79	9 <sup>th</sup> -12 <sup>th</sup>
Park View Middle School	8300 E. Dana Dr.	(928) 775-5115	150	6 <sup>th</sup> -8 <sup>th</sup>
Prescott Valley Schools	9500 Lorna Lane	(928) 772-8744	202	K-12 <sup>th</sup>
YCFA Achieve Academy	10401 Highway 89A	(928) 775-8000	223	4 <sup>th</sup> -12 <sup>th</sup>

**Private/Charter Schools**

**Chino Valley**

Name of School	Address	Phone	Enrollment	Grade Level
Mingus Springs Charter School	3600 N.Sunset Drive	(928) 636-4766	178	K-8 <sup>th</sup>

**Vocational Schools**

**Prescott**

Name of School	Type	Address	Phone	Enrollment
Tri-City Vocational/Technology High	Vocational/Technical	2957 Highway 89	(928) 442-9125	51
AAA American Contractor Business Services, Inc.	Contractor License	202 N. Granite	(928) 541-1404	

**Other Schools**

**Prescott**

Name	Address	Phone
Embry-Riddle Aeronautical University	3700 Willow Creek Road	(800) 888-3728 (928) 777-3728
Yavapai College	1100 East Sheldon St.	(928) 445-7300
Prescott College	220 Grove Ave	(928) 778-2090
Northern Arizona University	Bldg 1-129 / 1100 E Sheldon	(928) 771-6140
Old Dominion University	1100 East Sheldon Street, Building 31, Room 109A	(928) 445-4616
Ecosa Institute	201B North Alarcon	(928) 541-1002 (877) 541-1006
RAM Team Arizona	Classroom Locations Vary	(928) 771-2500
Asis Massage Education	115 S. McCormick St., Ste. 4	(928) 717-2747 (888) 517-2747
Northern Arizona Institute of Real Estate	1122 E. Gurley Street	(928) 717-1710
The Skin Institute	1955 Commerce Cir., Ste. A	(928) 445-5205

**Prescott Valley**

Name	Address	Phone
Yavapai College	6955 Panther Path	(928) 717-7910
Northcentral University	10000 E. University Drive	(928) 541-7777, (888) 327-2877

**Other Schools**

**Chino Valley**

Name	Address	Phone
Yavapai College. College of Agribusiness	2275 Old Home Manor Drive	(928) 717-7720

**Electricity**

Electrical service for all of the communities in this document is provided by Arizona Public Service (APS).

Name	Address	Phone
APS	120 North Marina, Prescott, AZ 86301	(800) 253-9405

**Sewer**

**Prescott**

Name	Address	Phone
City of Prescott	433 N Virginia St	(928) 777-1130

**Prescott Valley**

Name	Address	Phone
Town of Prescott Valley	7501 E. Civic Circle	(928) 759-3070

**Chino Valley**

Name	Address	Phone
Town of Chino Valley	PO Box 406. 1020 West Palomino Road, Chino Valley, AZ 86323	(928) 636-6084

**Septic**



## Propane / Natural Gas

Listings in this section reflect areas served.

### Prescott

Name	Address	Phone
Barrett Propane	1555 W. Iron Springs Road	(928) 636-1600
Ferrellgas	1489 Masonry Lane	(928) 445-3940
Flame Propane	475 6th St	(928) 445-3191
Superior Propane		(928) 759-3740
U-Haul Co.	2122 E State Route 69	(928) 776-4805
U-Haul Co.	431 S Montezuma St	(928) 541-0173
UniSource Energy Services	6405 Wilkinson Dr	(877) 837-4968

### Prescott Valley

Name	Address	Phone
Barrett Propane	1555 W. Iron Springs Road, Prescott, AZ 86305	(928) 636-1600
Ferrellgas	1489 Masonry Lane	(928) 445-3940
Superior Propane		(928) 759-3740
Unisource Energy Services	6405 Wilkinson Dr, Prescott, AZ 86301	(877) 837-4968
Yavapai Bottle Gas	2150 N Concord Dr # B, Dewey, AZ 86327	(928) 776-9007

### Chino Valley

Name	Address	Phone
Barrett Propane	1555 W. Iron Springs Road, Prescott, AZ 86305	(928) 636-1600
Columbia Propane		(928) 636-9359
Flame Propane	475 N.6th Street, Prescott, AZ 86301	(928) 445-3191
Santa Fe Propane	2715 N US Highway 89	(928) 636-1313
Superior Propane		(928) 759-3740

### Dewey-Humboldt

Name	Address	Phone
Superior Propane		(928) 759-3740
United Fuel & Energy Corporation	4850 N Hayfield Draw, Camp Verde, AZ	(800) 675-7680
UNS Gas Incorporated		(520) 571-4000
Yavapai Bottle Gas	2150 N Concord Dr # B, Dewey, AZ 86327	(928) 776-9007

## Water

### Prescott

Name	Address	Phone
City of Prescott	1481 Sundog Ranch Rd	(928) 777-1118
A-1 Bulk Water Delivery Service Inc.	6495 N Bridle	(928) 772-3870
All About Water		(928) 925-8532
American Water Man	1403 Iron Springs Rd.	(928) 445-0648
H2O Delivery		(928) 541-9710
Rockin R Water Delivery		(928) 999-2171

### Prescott Valley

Name	Address	Phone
Town of Prescott Valley	7501 E. Civic Circle	(928) 759-3070
Rockin R Water (bulk)		(928) 999-2171
H2O Delivery (bulk)		(928) 541-9710

### Chino Valley

Name	Address	Phone
Town of Chino Valley	1982 N. Voss Dr.	(928) 636-6084
City of Prescott	1481 Sundog Ranch Rd	(928) 777-1118

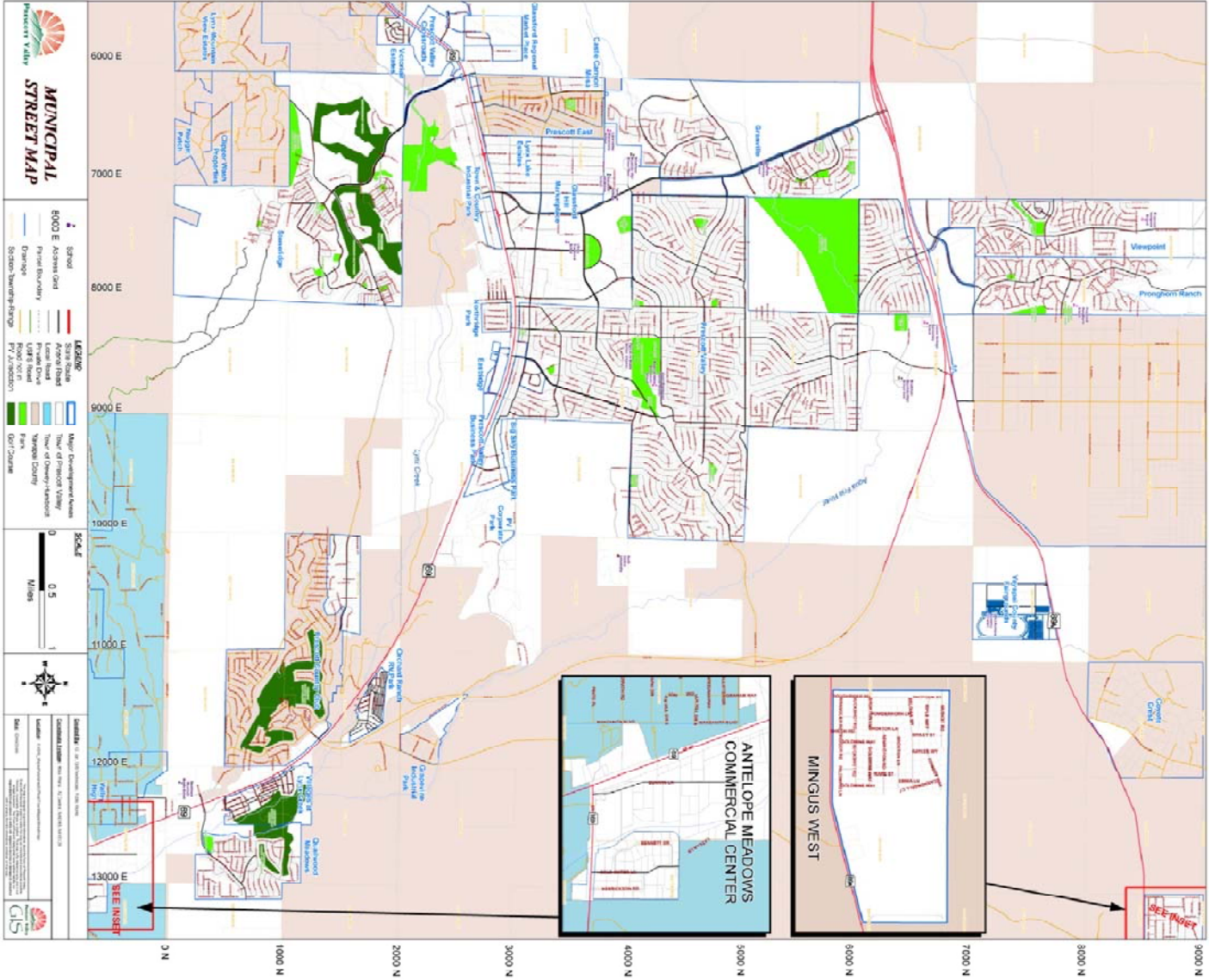
### Dewey-Humboldt

Name	Address	Phone
Humboldt Water System Company Incorporated	17901 E Trails End Rd, Mayer, AZ 86333	(928) 632-9730
Wilhoit Water Company	901 1st South St, Clarkdale, AZ 86324	(928) 639-1308



# City Boundaries

## Prescott Valley



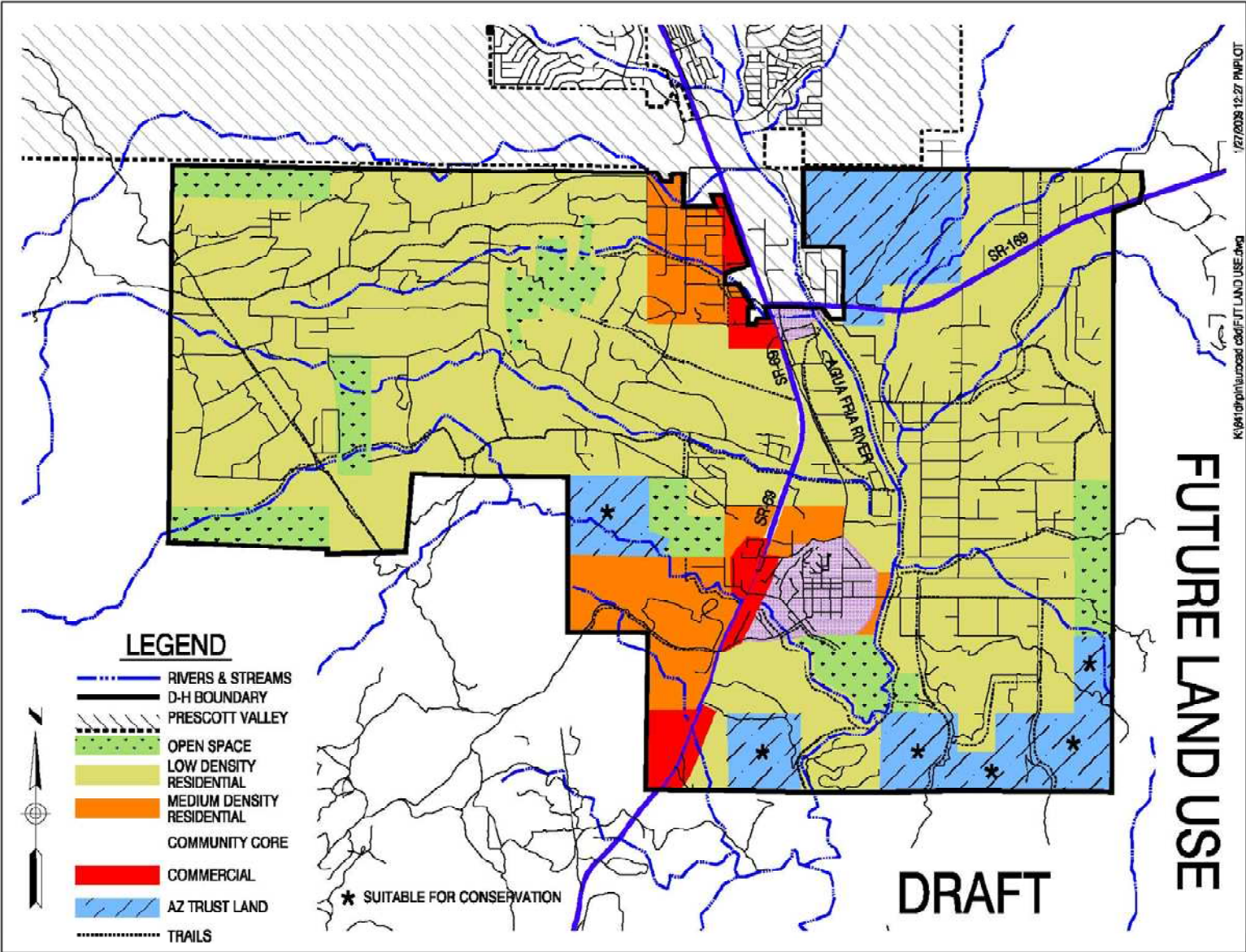
### **Chino Valley**

- 62.42 Square Miles.



# City Boundaries

## Dewey-Humboldt



### Distances from Major Markets

All distances are in miles and calculated as the shortest driving distance between city centers.

	Prescott	Prescott Valley	Chino Valley	Dewey-Humboldt
Phoenix	101	91	109	83
Tucson	214	205	222	197
Albuquerque	418	408	410	403
Flagstaff	95	86	87	80
Las Vegas	259	263	246	271
Los Angeles	382	389	450	447
El Paso	529	520	537	512

Source: <http://maps.google.com>

### Radius Map



## Cellular Phone Service

The greater Prescott area has excellent coverage for all major carriers.

## Airports

Ernest A. Love Field (PRC), Prescott Regional Airport is Northern Arizona's premier destination for learning to fly and The Center of Aviation in Northern Arizona.

In partnership with Alaska Airlines, Horizon Air provides daily flights to and from Los Angeles International Airport (LAX), where a wide selection of domestic and international connections can be made. For more information, flight schedules, ticket pricing and reservations please visit [www.alaskaair.com](http://www.alaskaair.com) or call Horizon Air Reservations at 800-547-9308.

Great Lakes Airlines provides daily direct flights to and from Ontario, CA (ONT), Farmington, NM (Durango, CO), and Denver, CO. Through a code share agreement with United Airlines, many US and international destinations are available. For more information, flight schedules, ticket pricing and reservations please visit [www.flygreatlakes.com](http://www.flygreatlakes.com) or call Great Lakes Reservations at 800-554-5111.

Additionally, the greater Prescott area has several private airstrips:

City	Facility Name	Location ID	Owner Name	Owner Address	Owner Phone
Chino Valley	H&H Ranch Airstrip	AZ46	Carol Hills	15295 North Brenda Drive, Prescott, AZ 86305	928-717-2471
Chino Valley	Robin	59AZ	Bonanza Trust	Po Box 394, Chino Valley, AZ 86323	520-636-2464
Mayer	Orme School	42AZ	The Orme School	Hc 63 Box 3040, Mayer, AZ 86333	602-632-7601
Paulden	Pilots Rest	AZ57	Pilot Resort Inc	Po Box 385, Paulden, AZ 86334	520-636-4830
Prescott	Big Springs Ranch	AZ27	Peter Hartmann, et. al.	Po Box 148, Paulden, AZ 86334	928-636-7207
Prescott Valley	Adams Place	72AZ	Adam Wunderlich	8407 Sommer Dr, Prescott Valley, AZ 86314	520-772-1159
Prescott Valley	Versatile	AZ70	Thomas G. Klein	9225 E Bighorn, Prescott Valley, AZ 86314	602-772-0695
Seligman	Seligman	P23	Yavapai County	1100 Commerce Drive, Prescott, AZ 86305	928-771-3183



## Express Shipping Providers

### UPS

#### Prescott

Name	Address	Phone
The UPS Store	303 E Gurley St	(928) 445-0099
UPS Drop Box - Frontier Building	141 S McCormick St	
UPS Drop Box - Self-Serve Drop Box	102 N Cortez St	
UPS Drop Box - Marina Center	126 N Marina St	
UPS Drop Box - Russ Lyon Realty Building	600 E Gurley St	
UPS Drop Box - Yavapai Title	1235 E Gurley St	
UPS Alliance Location - Staples	186 E Sheldon	(928) 776-0041
Authorized Shipping Outlet - Aim Mail Center	172 E Sheldon	(928) 778-9335
The UPS Store	1042 Willow Creek Rd	(928) 445-4560
The UPS Store	3196 Willow Creek	(928) 443-5655
UPS Drop Box - Montezuma Plaza	720 N Montezuma Rd	
UPS Drop Box - Self-Service Drop Box	301 W Whipple St	
UPS Drop Box - Plaza West	1575 Plaza West Dr	
UPS Drop Box - Self-Serve Drop Box	3626 Crossings Dr	
UPS Drop Box - Prescott Airport	6500 MacCurdy Dr	

#### Prescott Valley

Name	Address	Phone
The UPS Store	7760 E State Route 69 #C5	(928) 772-0000
UPS Drop Box - National Bank Of Arizona	2825 N Glassford Hill Rd	
UPS Customer Center - Staffed Location	9235 E Valley Rd	(800) 742-5877
Authorized Shipping Outlet - Postnet	3298 N Glassford Hill Rd	(928) 759-3700

#### Chino Valley

Name	Address	Phone
Authorized Shipping Outlet - Chino Ship & Copy Center	388 W Butterfield Rd	(928) 636-7677
UPS Drop Box - Yavapai Title Agency	980 Sr 89	

Source: <http://www.ups.com/>

**Federal Express****Prescott**

<b>Name</b>	<b>Address</b>	<b>Phone</b>
<b>FedEx Drop Box - Outside USPS</b>	101 W Goodwin St	
<b>Freemont Plaza - Inside</b>	141 S McCormick St	
<b>Summit Bank Bldg - Inside</b>	122 N Cortez St	
<b>Aim Mail Center #173</b>	172 E Sheldon St, Suite A	(928) 778-9335
<b>FedEx Drop Box - Outside USPS</b>	442 Miller Valley Rd	
<b>Candies Mail Biz And Gifts</b>	1095 E Gurley St	(928) 541-1100
<b>Helfinstine Cpa - Outside</b>	1565 Plaza West Dr	
<b>FedEx Kinko's Office &amp; Print Center</b>	1220 Gail Gardner Way, Suite 101	(928) 443-9385
<b>Office Max - Outside</b>	1931 E State Rte 69	
<b>Smoketree Plaza - Outside</b>	2971 Willow Creek Rd	
<b>Weber Insurance - Outside</b>	3626 Crossings Dr	
<b>Cds - Outside</b>	2286 Crosswinds Dr	

**Prescott Valley**

<b>Name</b>	<b>Address</b>	<b>Phone</b>
<b>FedEx Express Ship Center</b>	6501 E Second St	
<b>Postnet Az 141</b>	3298 N Glassford Hill Rd, Suite C	(928) 759-3700

**Chino Valley**

<b>Name</b>	<b>Address</b>	<b>Phone</b>
<b>Chino Ship &amp; Copy Center</b>	388 W Butterfield Rd	(928) 636-7677

Source: <http://www.fedex.com/>

**USPS**

The United States Postal Service can be contacted by telephone at (800) ASK-USPS.

**Prescott**

Name	Address
Prescott Goodwin	101 W Goodwin St Ste 103, Prescott, AZ 86303-9998
Prescott	442 Miller Valley Rd, Prescott, AZ 86301-9998
Prescott Ft Whipple Branch	500 N US Highway 89, Prescott, AZ 86313-5001
CPU - Twin Lakes Market	3122 N State Route 89, Prescott, AZ 86301-4915

**Prescott Valley**

Name	Address
Prescott Valley Annex	6545 E 2nd St, Prescott Valley, AZ 86314-9997
Prescott Valley	8307 E State Route 69 Ste 1, Prescott Valley, AZ 86314-9452
CPU – Robert’s Marketplace	6450 N. Robert Rd., Prescott Valley, AZ, 86314

**Chino Valley**

Name	Address
Chino Valley	725 E Road 2 N, Chino Valley, AZ 86323-9998

**Dewey-Humboldt**

Name	Address
Dewey	12420 E Kachina Pl, Dewey, AZ 86327-9998
Humboldt	12814 E Main St, Humboldt, AZ 86329-9997

Source: <http://www.usps.com/>

## Taxes

### Arizona Personal Income Tax Rates

Brackets	Rate
\$0-\$10,000	2.59%
\$10,001-\$25,000	2.88%
\$25,001-\$50,000	3.36%
\$50,001-\$150,000	4.24%
\$150,000+	4.54%

Source: <http://www.taxfoundation.org/taxdata/>

### Corporate Income Tax

Statewide rate of 6.968% (Minimum of \$50)

Source: <http://www.taxfoundation.org/taxdata/>

### Unemployment Insurance

Tax rates range from 0.02% to 5.40% on the first \$7,000 in wages per employee/per calendar year. Average rate in 2008 is 1.39%. New Employer rate is 2.00%

Source: <http://www.azdes.gov/esa/uitax/uithome.asp>

### Arizona Worker's Compensation

Cost per \$100 payroll ranges from \$0.31 to \$31.10 depending on Job Code

Source: NCCI Holdings, Inc (Scopes Manual) (<http://www.ncci.com/>)

### Sales and Use Tax Rates

	Prescott	Prescott Valley	Chino Valley	Dewey-Humboldt
State	5.60	5.60	5.60	5.60
Local	2.00	2.33	3.00	2.00
County	0.75	0.75	0.75	0.75
Total	8.35	8.68	9.35	8.35
Bed	3.00	2.33	3.00	2.00

Source: <http://www.azdor.gov/> (Arizona Department of Revenue)

Source: <http://www.modelcitytaxcode.org/> (League of Arizona Cities)

### Property Tax Rates (2008)

	Prescott	Prescott Valley	Chino Valley	Dewey-Humboldt
Elementary/High Schools	2.98	3.88	3.67	3.88
City/Fire District	0.42	1.64	2.13	1.64
Countywide	3.05	3.05	3.05	3.05
Total	6.45	8.57	8.85	8.57

Note: Tax rates in dollars per \$100 assessed value.

## Banks and Credit Unions

### Prescott

Name	Address	Phone
Arizona State Credit Union	1335 Gail Gardner	(928) 777-6000
Arizona State Credit Union	530 E. Gurley St.	(928) 777-6000
Bank of America	301 W. Gurley St.	(928) 778-1350
Bank of America	1030 Willow Creek Rd.	(928) 445-7206
Chase	746 Miller Valley Rd.	(928) 771-6246
Chase	302 W. Gurley St.	(928) 771-6220
Chase	307 Lee Blvd.	(928) 771-8890
Compass Bank	923 E. Gurley St.	(928) 778-3311
Compass Bank	174 E. Sheldon St.	(928) 708-0611
Country Bank	107 E. Willis St.	(928) 443-9595
Country Bank	147 N. Cortez	(928) 443-9440
Country Bank	1275 Gail Gardner Way	(928) 717-2333
Credit Union West	202 Grove Ave.	(928) 445-1943
Desert Hills Bank	3027 Dollar Mark Way	(928) 771-8801
Downey Savings	3030 E. Highway 69	(928) 771-8585
M&I Bank	303 N. Montezuma St.	(928) 776-1010
National Bank of Arizona	1055 Iron Springs Rd.	(928) 771-0760
National Bank of Arizona	102 W. Gurley St.	(928) 771-8100
Prescott Federal Credit Union	500 N. Highway 89, Bldg. T-5	(928) 445-7970
State Farm Bank	377 N. Montezuma St., Ste. 106	(928) 776-8100
State Farm Bank	147 Grove Ave.	(928) 445-2061
Summit Bank	201 N. Montezuma St.	(928) 778-6648
Sun Bank Prescott	3050 E. State Route 69	(928) 445-4122
Wachovia	221 N. Marina	(928) 778-9241
Wells Fargo	1831 E. Hwy 69	(928) 717-6030
Wells Fargo	825 Miller Valley Rd.	(928) 778-7128
Wells Fargo	3186 N. Willow Creek Rd.	(928) 771-3770

## Banks and Credit Unions

### Prescott Valley

Name	Address	Phone
Az. State Credit Union	7111 E. Pav Way	(928) 778-6120
Bank of America	7490 E. Highway 69	(928) 772-8200
Compass Bank	7680 E. Highway 69	(928) 775-2472
Country Bank	3044 N. Glassford Hill Rd.	(928) 759-8600
JP Morgan Chase Bank	7900 E. Highway 69	(928) 771-6287
National Bank of Arizona	2825 N. Glassford Hill Rd.	(928) 772-8333
Summit Bank	2955 N. Lake Valley Rd.	(928) 772-6622
Wells Fargo Bank	7520 E. Highway 69	(928) 717-6037
Wells Fargo Bank	2900 N. Navajo	(928) 759-8004
Wells Fargo Bank	7720 E. Highway 69	(928) 759-9093
Yavapai Federal Credit Union	8640 E. Highway 69	(928) 775-3827
M&I Bank	7221 E. Florentine Rd.	(928) 775-7602
Washington Federal Savings	5980 E. 2 <sup>nd</sup> St.	(928) 759-7053

### Chino Valley

Name	Address	Phone
National Bank	1299 N Highway 89	(928) 636-4466
Summit Bank	317 Market Place	(928) 636-7144
Chase bank	31 Butterfield Rd	(928) 636-4444
Arizona State Credit Union	1021 North Highway 89, Suite 106	

### Dewey-Humboldt

Name	Address	Phone
State Farm Bank	12075 E State Route 69 # A	(928) 775-4080

## Industrial Development Authority

---

Industrial Development Authorities (IDAs) are enabled by A.R.S. Title 9, Chapter 11, and Title 35, Chapter 701, which authorizes IDA's and prescribes their powers, duties and procedures for cooperation with local government bodies. The purpose of IDAs is to assist governments in the development and financing of industry within their corporate limits within the objectives of each IDA. Some examples of the powers and duties of local IDAs are: (1) acquisition, ownership, construction, leasing, selling and disposing of all kinds of properties; (2) Promote industry and develop trade by inducing manufacturing, industrial, and commercial enterprises to locate within their boundaries; (3) stimulate and encourage the production, development and use of the agricultural products and natural resources; (4) assist, financially and otherwise, in the rehabilitation, expansion and development of business and industry that will reduce pollution, promote and ensure job opportunities, and promote and assure an improved standard of living. Contact the individuals below to receive more information, obtain an application, or examine fee structure.

### Yavapai County

Mr. Barry B. Cline, Statutory Agent

Boyle, Pecharich, Cline & Whittington & Stallings, P.C.

1251 N. Canvas Pass

Prescott Valley, 86314

928-417-3124

### Prescott

Mr. Barry B. Cline, Statutory Agent

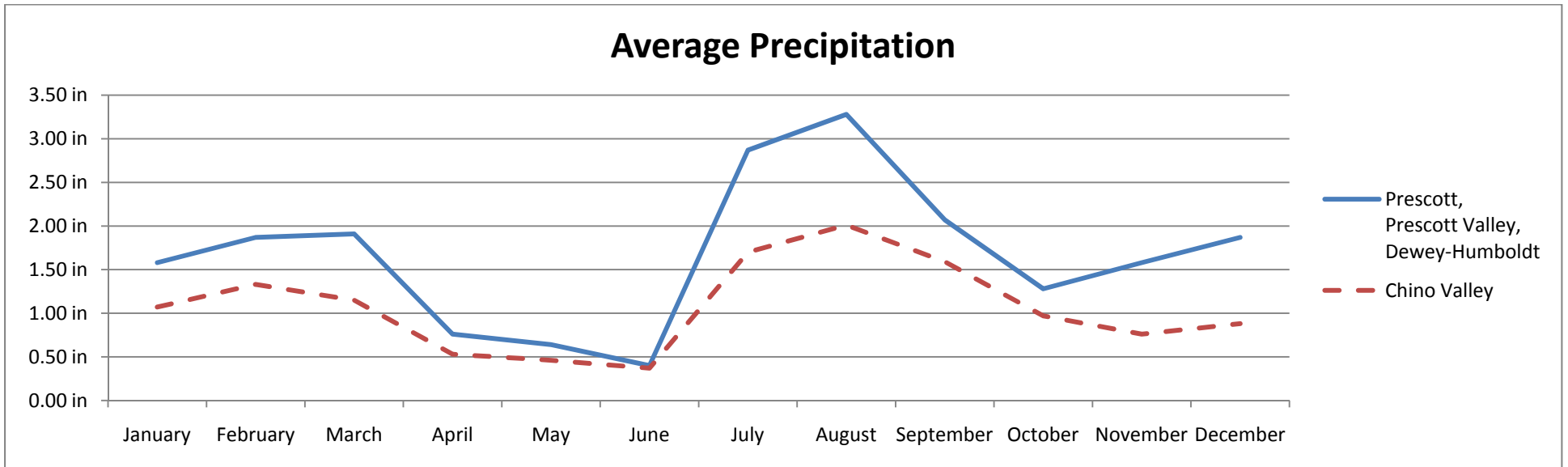
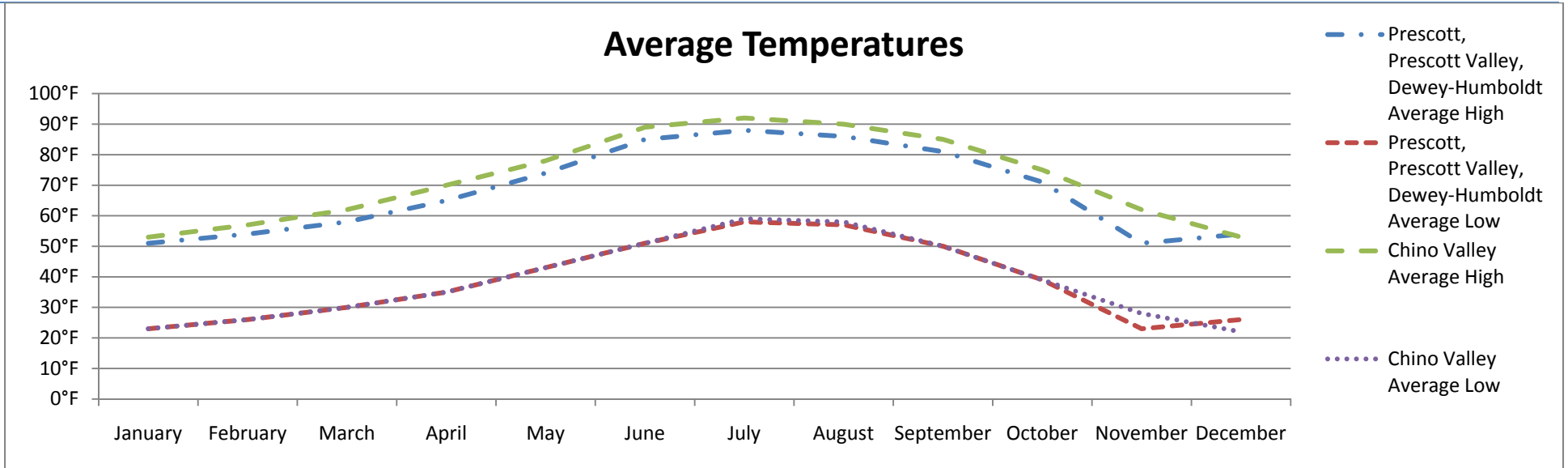
Boyle, Pecharich, Cline & Whittington & Stallings, P.C.

125 Granite St.

Prescott, AZ 86301

928-445-0122

Weather

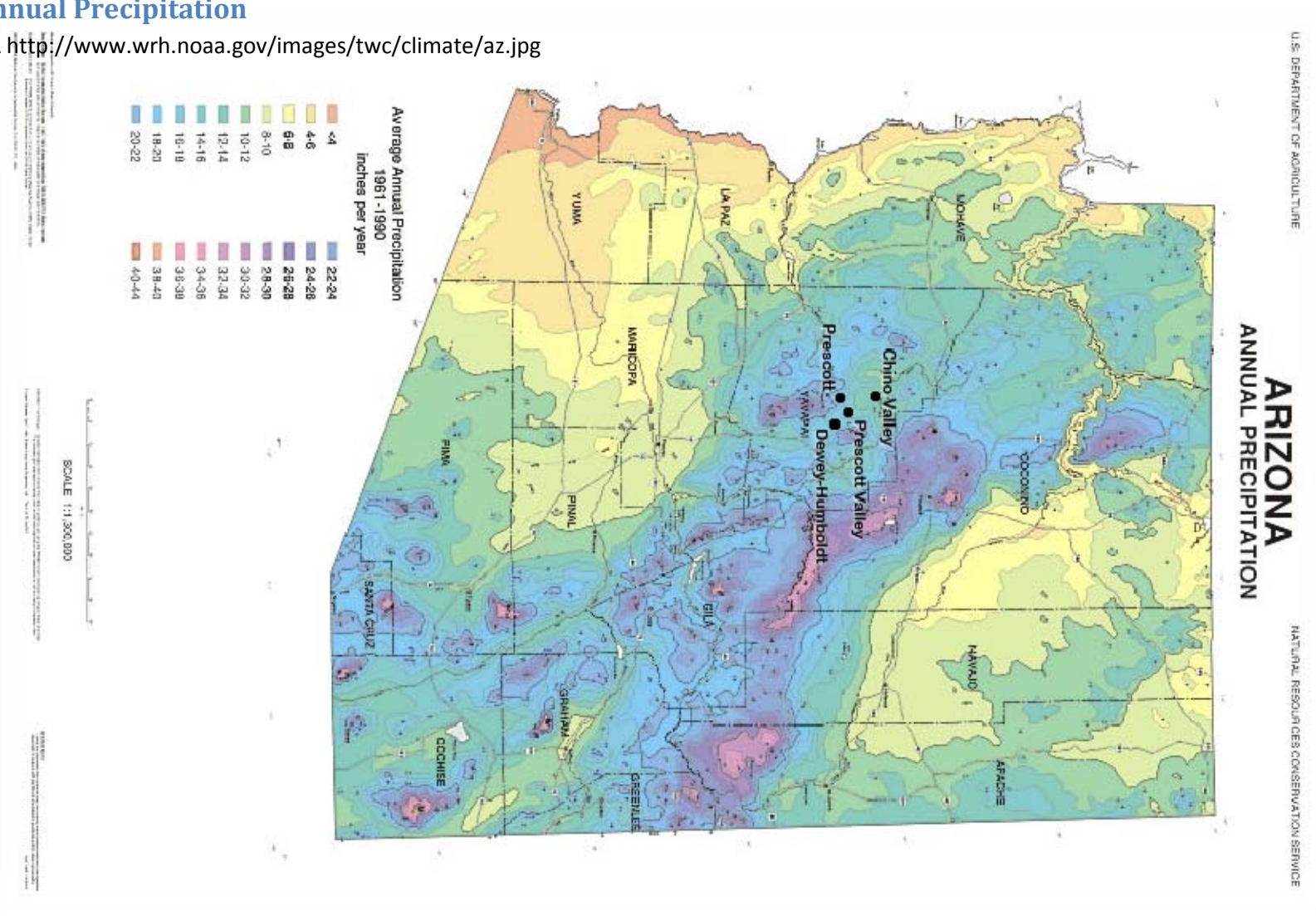


Source: <http://www.weather.com/weather/wxclimatology/monthly/USAZ0178>  
 Source: <http://www.weather.com/weather/wxclimatology/monthly/USAZ0037>



### Arizona Annual Precipitation

Source: NOAA <http://www.wrh.noaa.gov/images/twc/climate/az.jpg>



## Weather

### Rainfall / Snowfall / Elevation

	Prescott	Prescott Valley	Chino Valley	Dewey-Humboldt
<b>Rainfall in Inches</b>	12.2	12.8	12	12.8
<b>Snowfall in Inches</b>	17	15.9	8	15.9
<b>Elevation (Mean above Sea Level)</b>	5,400 ft (1,646 m)	5,100 ft (1,554 m)	4,750 ft (1,448 m)	4,581 ft (1,396 m)

Source: <http://www.weatherbase.com>

Source: Town of Dewey-Humboldt

## Real Estate

### Average Home Values

Zip	City	Value of Home
<b>86301, 86305</b>	Prescott	\$362,000
<b>86312, 86314</b>	Prescott Valley	\$213,000
<b>86323</b>	Chino Valley	\$157,000
<b>86327, 86329</b>	Dewey-Humboldt	\$170,000

### Average Monthly Rental (Apartments)

	Prescott	Prescott Valley	Chino Valley	Dewey-Humboldt
<b>Studio</b>	\$450	\$450		N/A
<b>1 Bedroom</b>	\$525	\$525		
<b>2 Bedroom</b>	\$650	\$600		
<b>3 Bedroom</b>	\$800	\$700		

**Real Estate**

**Home Sales**

**Prescott**

<b>Year</b>	<b>Homes Sold</b>	<b>Average Price</b>	<b>Percent Change From Previous Year</b>	<b>Average Days On Market</b>
2008	771	\$360,177	-05%	161
2007	1023	\$379,235	- 03%	134
2006	1112	\$389,192	+ 09%	101
2005	1469	\$356,014	+ 28%	71
2004	1614	\$278,006	+ 22%	88
2003	1437	\$228,615	+ 07%	104
2002	1199	\$213,092	+ 16%	97
2001	1108	\$184,440	+ 01%	107
2000	1037	\$183,070	+ 07%	117

Source: <http://www.prescottrealestate.com/mktwatch.htm>

**Prescott Valley**

<b>Year</b>	<b>Homes Sold</b>	<b>Average Price</b>	<b>Percent Change From Previous Year</b>	<b>Average Days On Market</b>
2008	664	\$208,153	-12%	122
2007	713	\$236,703	- 01%	121
2006	826	\$239,603	+ 06%	87
2005	1149	\$226,314	+ 44%	51
2004	1035	\$157,539	+ 16%	68
2003	929	\$135,915	+ 14%	84
2002	840	\$119,519	+ 06%	86
2001	828	\$113,223	+ 09%	96
2000	717	\$104,093	+ 08%	99

Source: <http://www.prescottrealestate.com/mktwatch.htm>

## Real Estate

---

### Home Sales (Continued)

#### Chino Valley / Paulden

Year	Homes Sold	Average Price	Percent Change From Previous Year	Average Days On Market
2008	265	\$193,126	-15%	145
2007	330	\$227,807	- 05%	135
2006	411	\$238,846	+15%	104
2005	578	\$206,798	+ 23%	82
2004	562	\$167,955	+ 22%	104
2003	431	\$138,136	+ 09%	118
2002	325	\$126,617	+ 02%	121
2001	296	\$124,298	+ 05%	129
2000	227	\$117,904	+ 09%	125

Source: <http://www.prescottrealestate.com/mktwatch.htm>

#### Dewey-Humboldt

## Medical Services

### Hospitals

Name	Address	Phone
<b>Yavapai Regional Medical Center West</b>	1003 Willow Creek Rd., Prescott, AZ	(928) 445-2700
<b>Veterans Affairs Medical Center</b>	500 N. Hwy 89, Prescott, AZ	(928) 445-4860
<b>Yavapai Regional Medical Center (East)</b>	7700 E. Florentine Rd., Prescott Valley, AZ	(928) 445-2700
<b>Chino Valley Medical Center</b>	474 North Highway 89, Chino Valley, AZ	(928) 636-4355

### Other Centers, Specialists, Associations, and Clinics

#### Prescott

Name	Address	Phone	Specialty
<b>Active Life Physical Therapy</b>	957 Black Dr.	(928) 778-9898	Physical Therapy
<b>Arizona Hand Center &amp; Physical Rehab</b>	3108 Clearwater Dr., Ste B2	(928) 776-4206	Physical Therapy
<b>Backway's Physical Therapy, PLLC</b>	250 S. McCormick St.	(928) 777-8050	Physical Therapy
<b>Birthline</b>	808 W. Hillside Ave.	(928) 778-5683	Pregnancy Counseling
<b>Bradshaw Mountain Diagnostic Laboratories</b>	990 Willow Creek Rd.	(928)778-7823	Laboratory tests
<b>Bradshaw Mountain Diagnostic Laboratories</b>	3155 Stillwater Dr., Ste. 8	(928) 443-9909	Laboratory tests
<b>Bradshaw Mountain Diagnostic Laboratories</b>	1781 E. SR 69, Ste. 11	(928) 717-2815	Laboratory tests
<b>Center for Physical Excellence</b>	3117 Stillwater Dr.	(928) 442-0005	Orthopedic & Sports Medicine Physical Therapy
<b>Desert Hand Therapy</b>	1231 Willow Creek Rd.	(928) 443-1120	Physical Therapy
<b>Garcia Physical Therapy</b>	1526 Idylwild Rd.	(928) 442-1234	Physical Therapy
<b>Good Samaritan Society-Prescott Village</b>	1030 Scott Dr., Ste. B	(928) 777-8840	Physical Therapy
<b>Hands on Healthcare</b>	722 N. Montezuma St.	(928) 776-8864	Chiropractic
<b>The Heart Center at YRMC</b>	1003 Willow Creek Rd	(928) 445-2700	Cardiology/Surgery
<b>Kachina Healing Center, LLC</b>	3103 Clearwater Dr., Suite B	(928) 759-2612	Chiropractic and Integrative Medicine
<b>Mirkut Physical Therapy, LLC</b>	919 12th Pl., Ste. 11	(928) 777-0033	Physical Therapy
<b>Northern Arizona Orthosports Physical Therapy</b>	3195 Stillwater Dr., Ste. A	(928) 771-9327	Orthopedic, Surgical, Neurological, Fibromyalgia
<b>Northern Arizona Tumor Institute</b>	1100 Gail Gardner Way	(928) 776-1040	Oncology
<b>Peterson2 Physical Therapy</b>	1320 Iron Springs Rd.	(928) 771-2977	Physical Therapy
<b>Prescott Foot &amp; Ankle Clinic</b>	919 12th Pl., Ste. 10	(928) 776-0770	Podiatry
<b>Prescott Pediatrics</b>	811 Ainsworth Dr., Suite 106	(928) 771-5252	Pediatrics
<b>Reger Chiropractic</b>	1555 Iron Springs Rd.	(928) 778-9116	Chiropractic
<b>Sander Physical Therapy, Ltd.</b>	3195 Stillwater Dr.	(928) 771-8156	Pediatric Physical Therapy

## Medical Services

### Other Centers, Specialists, Associations, and Clinics

#### Prescott (Continued)

Name	Address	Phone	Specialty
<b>Sonora Quest Laboratories</b>	980 Willow Creek Rd., Ste. #203	(928) 445-5261	Laboratory tests
<b>Tri City Surgery</b>	5430 Distinction Way	(928) 445-1919	Multi-Specialty Ambulatory Surgery Center
<b>Weary Chiropractic Clinic</b>	957 Black Dr.	(928) 778-2227	Chiropractic
<b>Yavapai Regional Medical Center</b>	930 Division St.	(928) 771-5794	Physical, Occupational & Speech Therapy

#### Prescott Valley

Name	Address	Phone	Specialty
<b>Mt. Valley Regional Rehabilitation Hospital</b>	3700 N. Windsong Rd.	(928) 759-8800	Rehabilitation Services
<b>PV Primary and Urgent Care</b>	3051 N. Windsong Rd.	(928) 772-2591	Urgent care
<b>Del Webb Outpatient Center</b>	3262 N. Windsong Dr.	(928) 759-5900	Surgical center
<b>Bradshaw Mt. Diagnostic Lab</b>	7732 E. Florentine Rd.	(928) 772-5889	Laboratory tests
<b>Sonora Quest Laboratories</b>	3185 Windsong Dr. #8	(928) 772-5308	Laboratory tests

## Medical Services

### Medical Provider Specialties

	Prescott	Prescott Valley	Chino Valley	Dewey-Humboldt
Allergy and Immunology	7			
Anesthesiology	14			
Cardiovascular Disease	9	3		
Chiropractors	41	11	5	
Dermatology	6	6		
Family Practice	14	9	4	
Gastroenterology	4			
General Surgery	7			
Internal Medicine	7	3		
Nephrology	2			
Neurology	1			
Ob-Gyn	8	7		
Oncology	3	2		
Ophthalmology	9			
Optometrists	12	6	4	
Orthopedic	4			
Orthopedic Surgery	3	5		
Osteopathic	8			
Otolaryngology	3			
Pediatrics	8	8		
Psychiatry	5			
Podiatry	5	5		
Pulmonary Disease	2	2		
Radiology	11		1	
Rheumatic & Arthritic Conditions	1			
Sleep Disorders	2			
Sports Medicine	1			
Urology	1			
Naturopaths	9			
Homeopaths	3			
<b>Total Medical Providers</b>	<b>210</b>	<b>7</b>	<b>1</b>	<b>0</b>

## Crime

### Occurrences of Crimes

Crime	Prescott (2008)	Prescott Valley (2008)	Chino Valley (2005)	Dewey-Humboldt
<b>Murder/Manslaughter</b>	1	0	1	Data are unavailable because Dewey-Humboldt is an unincorporated community.
<b>Rape</b>	2	16	3	
<b>Robbery</b>	22	11	0	
<b>Aggravated Assault</b>	97	138	21	
<b>Total Violent Crime</b>	122	165	25	
<b>Burglary</b>	249	154	57	
<b>Larceny/Theft</b>	957	607	156	
<b>Vehicle Theft</b>	47	46	14	
<b>Total Property Crime</b>	1253	811	227	
<b>Total Crimes:</b>	1375	976	252	

Source: <http://www.disastercenter.com/arizona/crime>

### Crime Index per 100,000 People

Crime	Prescott (2008)	Prescott Valley (2008)	Chino Valley (2005)	Dewey-Humboldt
<b>Population</b>	43,280	38,962	9,472	Data are unavailable because Dewey-Humboldt is an unincorporated community.
<b>Murder/ Manslaughter</b>	2.31	0.00	10.6	
<b>Rape</b>	4.62	41.07	31.7	
<b>Robbery</b>	50.83	28.23	0	
<b>Aggravated Assault</b>	224.12	354.19	221.7	
<b>Total Violent Crime</b>	281.89	423.49	263.9	
<b>Burglary</b>	575.32	395.26	601.8	
<b>Larceny Theft</b>	2211.18	1557.93	1,647.00	
<b>Vehicle Theft</b>	108.60	118.06	147.8	
<b>Total Property Crime</b>	2895.10	2081.52	2,396.50	
<b>Total Crime</b>	3176.99	2505.00	2,660.40	

Source: <http://www.disastercenter.com/arizona/crime>



## Top Annual Events

---

### Prescott

#### May

- Southwestern Indian Arts Festival
- Mountain Artists Guild Spring Festival
- Phippen Museum of Western Art Show & Sale

#### June

- Prescott Bluegrass Festival
- Prescott Folk Arts Fair
- Prescott Frontier Days & World's Oldest Rodeo
- Prescott Frontier Days Parade
- Prescott Territorial Days
- All-Indian Pow Wow
- Tsunami on the Square
- Arizona Revue: That's Entertainment!

#### July

- Prescott Frontier Days & World's Oldest Rodeo
- Fourth of July Community Celebration / Fireworks
- Prescott Indian Art Market
- Navajo Rug & Indian Art Auction
- Arizona Revue: That's Entertainment!

#### August

- Mountain Artist's Guild Summer Festival
- Arizona Cowboy Poets Gathering
- Prescott Jazz Summit
- Cowboy Capital PBR
- Prescott Faire on the Square
- Arizona Revue: That's Entertainment!

#### September

- Prescott Book Festival
- Prescott Faire on the Square
- Taste of Prescott
- Yavapai County Fair
- Arizona Revue: That's Entertainment!

#### October

- Folk Music Festival
- Fall Antiques on the Square
- Fallfest in the Park
- Old West Oktoberfest
- Dog-toberfest
- Prescott Pumpkin Patch

#### November & December

- El Día de los Muertos
- Arizona's Official Christmas City
- World's Largest Gingerbread Village
- Electric Light Parade
- Dickens of a Christmas
- Prescott Christmas Parade and Courthouse Lighting
- Frontier Christmas
- Acker Musical Showcase

## Top Annual Events

---

### Prescott Valley

- Prescott Valley Days
- Valley of Lights
- Gold Fever Days
- World Arts Festival
- Yavapai County Fair
- Horse Racing at Yavapai Downs
- Festival of Lights

### Chino Valley

- Spring Fest., May
- Charming Chino 4<sup>th</sup> of July
- Fall Festival, October
- Territorial Days, September
- Hometown Chino XMAS, December

### Dewey-Humboldt

- Agua Fria Festival, 2<sup>nd</sup> Saturday of October

## Cultural Amenities

---

### Parks/Lakes

#### Prescott

- Acker Park
- Flinn Park
- Goldwater Lake
- Watson Woods Riparian Preserve
- Heritage Park
- Ken Lindley Field and Park
- Grace M. Sparkes Activity Center
- A.C. Williams Granite Creek Park
- Jim McCasland Willow Creek Park
- Willow Creek Park Dog Park
- Peppertree Mini-Park
- Vista Park

- Stricklin Park
- Kuebler Field
- Leroux Mini-Park
- Prescott Peavine National Recreation Trail
- Mike Fann Community Skate Park
- Rougrider Park Bill Vallely Field
- Honor Island Park
- Memorial Island Park
- Rowle P. Simmons Community Center
- Watson Lake Park
- Community Nature Center Open Space Preserve
- Pioneer Park
- White Spar Creekside Open Space Preserve

- Downtown Prescott Greenways Trail
- Prescott Frontier Days Rodeo Grounds

#### Prescott Valley

- Fain Park
- Mountain Valley Park
- Viewpoint Park, Pronghorn Park
- Quailwood Park
- George Andersen Park
- Sunflower Park
- Tonto Park North
- Tonto Park South
- Urban Forest Park

### Trails

#### Prescott

- City Trails (in Miles): 28 miles
- Prescott National Forest Trails: 450+ miles

#### Prescott Valley

- Iron King Trail

## Cultural Amenities

### Entertainment

#### Prescott

- Casinos (2)

#### Prescott Valley

- Yavapai County Fairgrounds
- Coors Events Center
- Tim’s Toyota Center

### Golf Courses

#### Prescott

- Antelope Hills Golf Course
- Hassayampa Golf Course
- Prescott Lakes Golf and Country Club
- Talking Rock Golf Course

#### Prescott Valley

- Stoneridge Golf Course
- Quailwood Golf Course
- Prescott Country Club Golf Course

### Museums

#### Prescott

Name	Address	Phone
<b>Phippen Museum</b>	4701 N. Highway 89	(928) 778-1385
<b>Sharlot Hall Museum</b>	415 W. Gurley St.	(928) 445-3122
<b>Smoki Museum</b>	147 N. Arizona	(928) 445-1230
<b>Arizona Softball Hall of Fame</b>	824 E. Gurley St.	(928) 777-1122

#### Chino Valley

Name	Address	Phone
<b>Chino Valley Historical Society</b>	PO Box 4154	(928) 636-6011
<b>High Desert Artists</b>	PO Box 1462	(928) 775-6412

### Theaters

#### Prescott

Name	Address	Phone
<b>Blue Rose Theater &amp; Living History</b>	415 W. Gurley St.	(928) 445-3122
<b>Prescott Fine Arts Association</b>	208 N. Marina St.	(928) 445-3286
<b>Elks Opera House</b>	117 E. Gurley St.	(928) 443-8541

**Yavapai College Performance Hall**

1100 E. Sheldon St.

(877) 928-4253

**Cultural Amenities**

**Theaters**

**Prescott (Continued)**

<b>Name</b>	<b>Address</b>	<b>Phone</b>
<b>Frontier Village 10 Cinema</b>	1771 E. Highway 69	(928) 445-7515
<b>Ruth Street Theater</b>	1050 N. Ruth Street	(928) 445-2322 ext 154

**Prescott Valley**

<b>Name</b>	<b>Address</b>	<b>Phone</b>
<b>Lonesome Valley Playhouse</b>	8859 E. Valley Rd.	(928) 759-3602
<b>Harkins Theatres</b>	7202 E. Pav Way	(928) 775-2284

**Libraries**

**Prescott**

<b>Name</b>	<b>Address</b>	<b>Phone</b>
<b>Prescott Public Library</b>	215 E. Goodwin St.	(928) 777-1500
<b>Superior Court Law Library</b>	120 S. Cortez St.	(928) 771-3309
<b>Yavapai College Library</b>	1100 E. Sheldon St.	(928) 445-7300
<b>Prescott College Library</b>	220 Grove Ave.	(928) 350-1300
<b>Embry-Riddle Aeronautical University Library</b>	3700 Willow Creek Rd.	(928) 777-3811

**Prescott Valley**

<b>Name</b>	<b>Address</b>	<b>Phone</b>
<b>Prescott Valley Library</b>	7501 E. Civic Circle	(928) 759-3040

**Chino Valley**

<b>Name</b>	<b>Address</b>	<b>Phone</b>
<b>Chino Valley Library</b>	1020 West Palomino Road	(928) 636-9115

**Dewey-Humboldt**

<b>Name</b>	<b>Address</b>	<b>Phone</b>
-------------	----------------	--------------

**Dewey-Humboldt Library**

2735 N Corral Street

(928) 632-5049

## Agricultural Information

According to the 1997 Census of Agriculture, there are 453 farms in Yavapai County. While the majority of the farms provide supplemental or part-time income, 37 agricultural operations sold products valued at more than \$100,000. Farmers' markets are popular attractions throughout the area.

Several commercial honey producers live in the county. In 2000, the average yield per colony in Arizona was 59 lbs. and overall production was 2,360,000 pounds.

Yavapai County's principal source of agricultural income is from the approximately 67,000 head of cattle and calves. In 2000, cash receipts for livestock and livestock products were \$79,028,000.

Source: <http://ag.arizona.edu/yavapai/anr/nr/naturalresourcesofyavapaicounty.html#>

## Conference Facilities

### Prescott

Name	Address	Phone	Facilities
<b>Arizona Church Conference Center</b>	1131 Country Club Dr	(928) 445-3499	
<b>Friendly Pine Camp &amp; Conference Center</b>	933 E. Friendly Pines Rd.	(928) 445-2128	
<b>Quality Inn &amp; Suites</b>	4499 Highway 69	(928) 777-0770	
<b>Residence Inn</b>	3599 Lee Blvd	(928) 775-2232	
<b>Springhill Suites</b>	200 E. Sheldon	(928) 776-0998	

### Chino Valley

Name	Address	Phone	Facilities
<b>The Windmill House</b>	1460 West Road 4 North	(928) 636-4675	Dining, Dancing, Wedding, Special Events
<b>Chino Valley Senior Center</b>	1021 West Butterfield Road	(928) 636-9114	Dining, Dancing, Wedding, Special Events

## Lodging Properties

### Total Numbers

	Prescott	Prescott Valley	Chino Valley	Dewey-Humboldt
<b>Hotel/Motel Properties</b>	26	6	2	
<b>Cabin/Lodge/Ranch Properties</b>	39			
<b>Bed &amp; Breakfast Inns</b>	16		1	
<b>Total:</b>	<b>81</b>	<b>6</b>	<b>3</b>	

### Prescott

Name of Property	Address	Phone	No. of Units	Conference/ Meeting Room	C/M Seating Capacity
America's Best Value Inn	1105 E. Sheldon St.	(928) 776-1282	70		
American Motel	1211 E. Gurley St.	(928) 778-4322	?		
Antelope Hills Inn-Suites at Airport Centre	Hwy 89 & Willow Creek Rd.	(928) 778-6000	41		
Apache Lodge Motel	1130 E. Gurley St.	(928) 445-1422	25		
Apple Creek Cottages	1001 White Spar Rd.	(928) 445-7321	14		
Blessing Retreat B&B	2640 Glenshandra Dr.	(928) 771-1735	3		
Bradshaw House Mountain Inn	7300 Big Bug Mesa Rd.	(928) 776-1495	4	Yes	10
Briar Wreath Inn B&B	232 S. Arizona Ave.	(928) 778-6048	5		
Carleton Terrace	315 E. Carlton St.	(928) 717-1607	32		
Cascade Motel	805 White Spar Rd.	(928) 445-1232			
Chapel Inn	146 N. Mt. Vernon Ave.	(928) 776-7030	4		
EconoLodge	1225 E. Gurley St.	(928) 445-7057	48	Yes	20
Comfort Inn of Prescott	1290 White Spar Rd.	(928) 778-5770	61	Yes	12
Cottages at Prescott Country Inn	503 S. Montezuma St.	(928) 445-7991	12		
Forest Villas Hotel	3645 Lee Circle	(928) 717-1200	62	Yes	15
Groom Creek Lodge	945 E. Marapai Rd.	(928) 445-1033	4	Yes	10
Gurley St. Lodge Bed & Breakfast	909 W. Gurley St.	(928) 442-0200	4		
Hampton Inn of Prescott	3453 Ranch Dr.	(928) 443-5500	76	2 Rooms	50 and 20
Hassayampa Inn	122 E. Gurley St.	(928) 445-1455	67	9	40-200
Heritage House Motel	819 E. Gurley St.	(928) 445-9091	20		
Hidden Acres Bed & Breakfast	3999 Pleasant Valley Dr	(928) 442-9592			
Highland Hotel	154 S. Montezuma St.	(928) 445-9059			
Holiday Inn Express	3454 Ranch Dr.	(928) 445-8900	76	Yes	30

## Lodging Properties

### Prescott (continued)

Name of Property	Address	Phone	No. of Units	Conference/ Meeting Room	C/M Seating Capacity
Holiday Lodge	1141 E. Gurley St	(928) 445-0420			
Hotel St. Michael	205 W. Gurley St.	(928) 776-1999	69	Yes	200
Hotel Vendome	230 S. Cortez St.	(928) 776-0900	20		
Let the Sun Shine Inn	658 Robinson Dr.	(928) 445-4464	3		
Log Cabin Bed & Breakfast	3155 N. SR 89	(928) 778-0442	5		
Mile Hi Motel	409 S. Montezuma St.	(928) 445-2050	11		
Moose Crossing Log Cabin	41 Limberlost Ln.	(928) 848-1777	1		
Motel 6	1111 E. Sheldon St.	(928) 776-0160	79		
Perkins Manor	109 N. Pleasant	(928) 277-4410	4	Yes	12
Pleasant Street Cottages	233 N. Pleasant St.	(928) 777-0548	2		
Pleasant Street B and B	142 S. Pleasant St.	(928) 445-4774	4		
Prescott Cabin Rentals	(representing 39 properties)	(928) 778-9573	39		
Prescott Pines Inn - Bed & Breakfast	901 White Spar Rd	(928) 445-7270	12		
Prescott Resort & Conference Center	1500 E. SR 69	(928) 776-1666	160	10	
Prescott Sierra Inn	809 White Spar Rd.	(928) 445-1250	49		
Prescotonian Best Western Motel	1317 E. Gurley St.	(928) 445-3096	121	2	
Prescott Inn & Suites	4499 Highway 69	(928) 777-0770	82	5	20, 40, 60, 125, 225
Residence Inn by Marriott	3599 Lee Blvd.	(928) 775-2232	82	2	76, 12
Rocamadour Bed & Breakfast	3386 N. Highway 89	(928) 771-1933	4		
Sheldon St. Lodge	115 E. Sheldon St.	(928) 445-5554	13		
Springhill Suites by Marriott	200 E. Sheldon St.	(928) 776-0998	105	2	25, 50
Treehouse Bed & Breakfast	4182 E. Pine Mountain Rd.	(928) 778-6090	2		

## Lodging Properties

### Prescott Valley

Name of Property	Address	Phone	No. of Units	Conference/ Meeting Room	C/M Seating Capacity
Prescott Valley Motel	8390 E. Highway 69	(928) 772-9412	24	No	N/A
America's Best Value Inn	8383 E. Highway 69	(928) 772-2200	50	No	N/A
Days Inn	7875 E. Highway 69	(928) 772-8600	78	No	N/A
Super 8	7801 E. Highway 69	(928) 775-5888	54	No	N/A
Hampton Inn and Suites	2901 Glassford Hill Rd.	(928) 772-1800	118	Yes	50
Comfort Suites	2601 Crownpoint Dr.	(928) 771-2100	100	Yes	60

### Chino Valley

Name of Property	Address	Phone	No. of Units	Conference/ Meeting Room	C/M Seating Capacity
Little Thumb Butte B & B	1252 Reata Trail Pauldin, Az 86334	(928) 636-4413			
The Teapot Inn B & B	989 West Center Street	(928) 636-7727		No	
Days Inn of Chino Valley			55 Rooms	No	

### Dewey-Humboldt

Name of Property	Address	Phone	No. of Units	Conference/ Meeting Room	C/M Seating Capacity
FX Ranch	4255 South Highway 69				



**RV Parks**

**Prescott**

<b>Name</b>	<b>Address</b>	<b>Phone</b>	<b># Spaces</b>
<b>Beverly Gardens RV Park</b>	1403 Iron Springs Rd	(928) 445-0648	95
<b>Cactus Mobile Ranch</b>	202 Cactus Dr.	(928) 445-1625	43
<b>Canyon Retreat RV Park</b>	2375 E. Valentine	(928) 445-3820	50
<b>Pine Lawn Ranch</b>	910 W. Gurley St.	(928) 445-3924	13
<b>Point of Rocks</b>	3025 N. SR 89	(928) 445-9018	96
<b>Shady Acres</b>	1305 Adams St.	(928) 445-3320	90
<b>Willow Lake RV Park</b>	1617 Heritage Park Rd.	(928) 445-6311	174
<b>Prescott Pines &amp; RV Park</b>	1520 White Spar	(928) 445-5255	135
<b>Camp Pine Rock &amp; RV</b>	1400 Pine Dr.	(928) 445-8357	20

**Prescott Valley**

<b>Name</b>	<b>Address</b>	<b>Phone</b>	<b># Spaces</b>
<b>Fairgrounds RV Park</b>	10443 Highway 89A	(928) 227-3310	153
<b>Orchard RV Ranch</b>	11250 E. Highway 69	(928) 772-8266	352

**Dewey-Humboldt**

<b>Name</b>	<b>Address</b>	<b>Phone</b>	<b># Spaces</b>
<b>Old Wagon Wheel Trailer Park</b>	12870 E Kloss Ave Humboldt, AZ 86329	(928) 632-7190	

### Campgrounds

	Name	Open Season	# of sites	Features
Prescott National Forest	Alto Pit OHV Campground	All Year	11	Overnight Camping and Day Use
	Groom Creek Horse Camp	05/01 - 10/31	36	Equestrian campground (horse required), trail access, drinking water, 12 corrals, 2 group sites
	Hazlett Hollow	05/01 - 10/01	15	Hiking, remote area, drinking water
	Hilltop	03/30 - 10/31	38	Hiking, fishing, gold panning, drinking water
	Lower Wolf Creek	05/01 - 10/31	20	Hiking, no drinking water
	Lynx Lake	03/30-10/31	36	Lake, boating, fishing, gold panning, hiking, drinking water, no swimming
	Mingus Mountain	05/01 - 10/31	25	Loop B 6 sites, Loop E 19 RV sites, hiking, scenic views, no drinking water
	Potato Patch	05/01 - 10/31	40	Loop A 28 sites, Loop B 12 RV sites, hiking, close to wilderness, drinking water
	Powell Springs	All year	10	No drinking water
	White Spar	All year	60	Drinking water, 11 sites open all year
	Yavapai	All year	25	Hiking, drinking water, near Granite Lake
	Watson Lake		40	Two boat launches, Courtesy dock, Fishing, Fish cleaning stations, Picnic armadas, Showers for campers, Restrooms, Horseshoe pits, Picnic tables, Barbecue grills, Playground equipment, Hiking trails, Overnight camping (summer months only), Showers for campers

Source: [http://www.fs.fed.us/r3/prescott/recreation/family\\_cg/index.shtml](http://www.fs.fed.us/r3/prescott/recreation/family_cg/index.shtml)

**Restaurants**

Type of Cuisine (as listed in phonebook)	Prescott	Prescott Valley	Chino Valley	Dewey-Humboldt
American	14	24	5	2
Buffet	2			
Chinese	4	2		
Coffee Houses	2	4		
Continental	4			
Fast Food	22	13		
German	1			
Ice Cream	3	3		
Indian	1			
Italian	5	4		1
Japanese	3			
Mexican	13	12	2	
Pizza	6	4		1
Seafood	3			
Southwestern	2			
Steaks, Chops, Etc.	9			1
Thai	2	1		
Other	7			





**Quick Contents**

---

Credits .....	3	Airports.....	24
Introduction .....	5	Express Shipping Providers.....	25
Population .....	6	Taxes.....	28
Major Public Employers .....	12	Banks and Credit Unions .....	29
Major Private Employers.....	12	Industrial Development Authority.....	31
Public Schools.....	13	Weather .....	32
Private/Charter Schools .....	14	Real Estate.....	34
Vocational Schools .....	15	Medical Services.....	37
Other Schools.....	15	Crime .....	40
Electricity.....	16	Occurrences of Crimes .....	40
Sewer .....	16	Top Annual Events.....	41
Septic.....	16	Cultural Amenities.....	42
Propane / Natural Gas.....	17	Agricultural Information.....	45
Water .....	18	Conference Facilities .....	45
City Boundaries .....	19	Lodging Properties .....	46
Distances from Major Markets .....	23	RV Parks.....	49
Radius Map .....	23	Campgrounds .....	50
Cellular Phone Service.....	24	Restaurants .....	51