

SPECIFICATIONS

1. 3" inlet/outlets Sch. 40. Plain End (No-Hub)
2. Max flow rate: 35 GPM
3. Liquid capacity: 35 Gallons (4.7 cu. ft.)
4. Max oil capacity: 19.5 Gallons
5. Sand capacity: 9.5 Gallons
6. Unit weight w/std. covers: 87 lbs.
7. 2,000 lb. load rated, bolted, gas/water tight composite covers.
8. Maximum operating temperature 190 °F continuous.
9. Seamless molded polyethylene tank.

OPTIONS

- ☐ **2P** - 2" Plain End SCH.40 Inlet / Outlet
- ☐ **2M** - 2" Male Thread Inlet / Outlet
- ☐ **3M** - 3" Male Thread Inlet / Outlet
- ☐ **4P** - 4" Plain End SCH.40 Inlet / Outlet
- ☐ **4M** - 4" Male Thread Inlet / Outlet
- ☐ **CC24** - Integral Membrane Clamping Collar Kit
- ☐ **CS1** - Clean Sweep Coalescing Media
- ☐ **DO2** - 2" Oil Draw-Off Arm
(for use with collection tank)

TeleGlide RISER OPTIONS

- ☐ **SR24** - >3-1/2"-22"
- ☐ **LR24** - >22"-37"

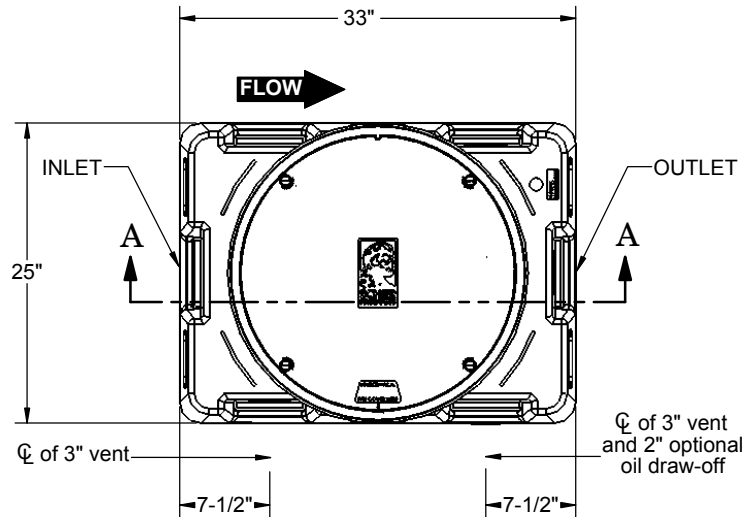
Signature of Approval: _____

Company: _____

Date of Approval: _____

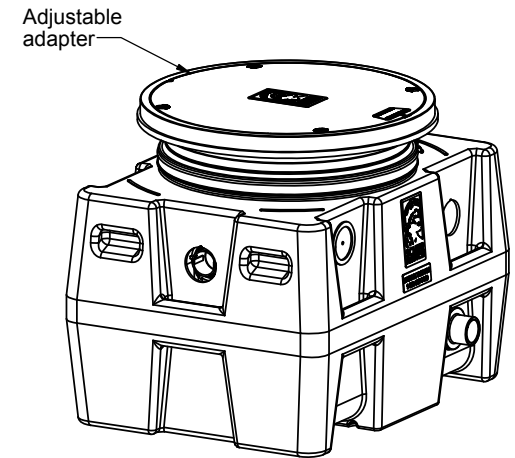
Specifying Engineer: _____

Engineering Firm: _____

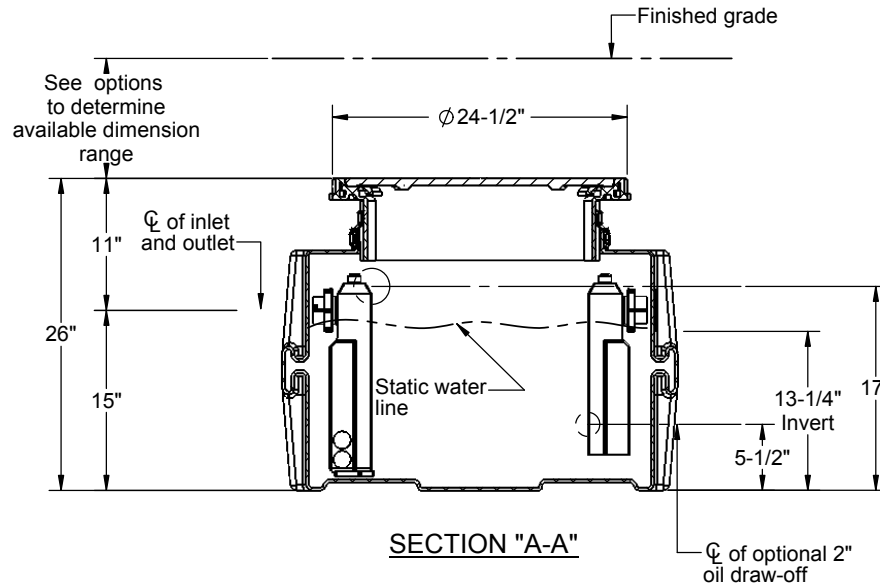


TOP VIEW

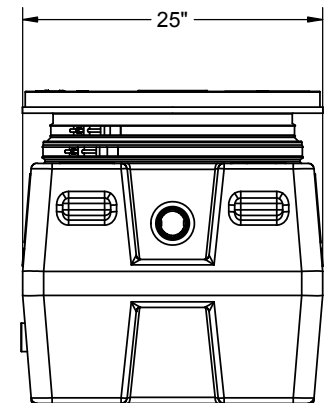
TAG NUMBER: _____



ISOMETRIC VIEW



SECTION "A-A"



OUTLET END VIEW

MODEL NUMBER: OS-35

PART NUMBER: 5020-001-XX

DESCRIPTION:

35 GPM POLYETHYLENE OIL / SAND SEPARATOR

SUBMITTAL SHEET

Schier Products
9500 Woodend Road
Edwardsville, KS 66111
Tel: 800-827-7119
Fax: 800-827-9664
www.schierproducts.com



SCHIER
PRODUCTS
Pioneering Drain Line Purity

Made in the U.S.A

DWG BY: N.EBERT

DATE: 07/08/2014

REV: 3

ECO: 1035

PROPRIETARY AND CONFIDENTIAL

THE INFORMATION CONTAINED IN THIS DRAWING IS THE SOLE PROPERTY OF SCHIER PRODUCTS. ANY REPRODUCTION IN PART OR AS A WHOLE WITHOUT THE WRITTEN PERMISSION OF SCHIER PRODUCTS IS PROHIBITED.