

# SSLGR16 SERIES • 120V • LED MR16



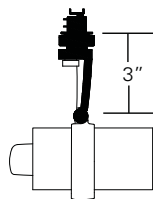
## The sleek and minimalist SSLGR16 series spotlight is integrated with a low-profile fitting

- Designed for self-ballasted MR16 GU10 base LED lamp up to 8 watts
- Die-cast aluminum housing
- Wrench locking in all horizontal and vertical planes
- On/off safety switch (on -00 Track and Busway fitting)
- Lamp ring is easily opened for relamping
- Lamp housing capable of holding two SORAA snap accessories (by others) and up to two additional rimless screens or gels
- Integral clear Pyrex safety shield
- Finishes: LSI Black, White, and Silver
- Fixture weight: 1.0 lb.

## MOUNTING OPTIONS

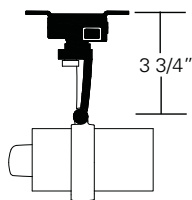
### SSLGR16-00

Lexan Fitting for 1 and 2 circuit LSI Track. With On/Off switch.



### SSLGR16-BUS

Lexan fitting for 1 and 2 circuit LSI Busway. With On/Off switch.

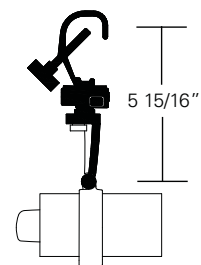


### SSLGR16-2G

Universal fitting for Unistrut Systems and any screw or bolt-up applications. With switch, 6-foot 3-wire grounding cord and NEMA 5-15P plug.

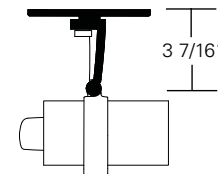
### SSLGR16-3G

C-clamp for pipes from 5/8" to 2" O.D. With switch, 6-foot 3-wire grounding cord and NEMA 5-15P plug.



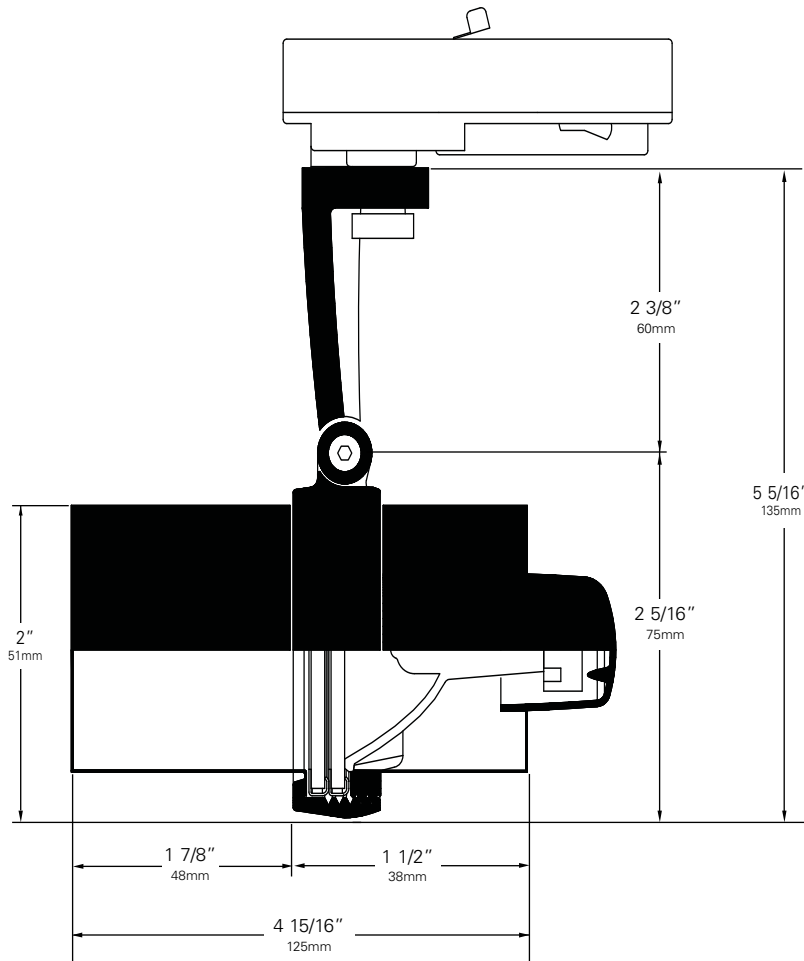
### SSLGR16-5A

Canopy for permanent mounting on standard 4" octagonal junction boxes.



### Other Options (Consult Factory):

- Custom stems, specify length (4"–48")
- Custom color, RAL palette
- Security/Worklight Fixture, add suffix **EF**. For use with -EF00 (Track) and -EFBUS (Busway) mounting options only.



## ORDERING INFORMATION

1. Select your **Mounting Option**.
2. Choose a **Finish** for your fixture:  
 All Black (**BB**) All White (**WW**) All Silver (**SS**)  
 Black ring and lamp cap with silver front and back (**BS**)  
 Black ring and lamp cap with white front and back (**BW**)  
 Silver ring and lamp cap with black front and back (**SB**)  
 White ring and lamp cap with black front and back (**WB**)

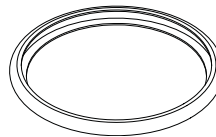
Example: **SSLGR16** — **00** **BS**  
FIXTURE FITTING FINISH

3. Don't forget your **Accessories!**  
 LSI features the widest range of accessories in the industry to help you modify the light's intensity, color, texture and pattern.

### MR16 LAMPS

LED	Spread	CBCP	
7.5	10°	6000	SM16GA-07-10D-930-03
7.5	25°	2400	SM16GA-07-25D-930-03
7.5	36°	1130	SM16GA-07-36D-930-03
7.5	60°	460	SM16GA-07-60D-930-03

### ACCESSORIES



#### Other accessories:

- **Color and Spread Gels AAA**

#### Backer Ring AAAB

Stainless steel ring to hold thin film gels when no other size AAA accessories are being used.



# SSLGR16 • PHOTOMETRIC DATA

**SORAA LED GU10 Lamp**

**SM16GA-07-10D-930-03**

7.5 watt, 35000 hrs  
 Beam Spread to 50% of CBCP **10°**  
 Center Beam Candlepower **6000**  
 Color Temperature (Kelvin) **3000**

**SORAA LED GU10 Lamp**

**SM16GA-07-25D-930-03**

7.5 watt, 35000 hrs  
 Beam Spread to 50% of CBCP **25°**  
 Center Beam Candlepower **2400**  
 Color Temperature (Kelvin) **3000**

**SORAA LED GU10 Lamp**

**SM16GA-07-36D-930-03**

7.5 watt, 35000 hrs  
 Beam Spread to 50% of CBCP **36°**  
 Center Beam Candlepower **1130**  
 Color Temperature (Kelvin) **3000**

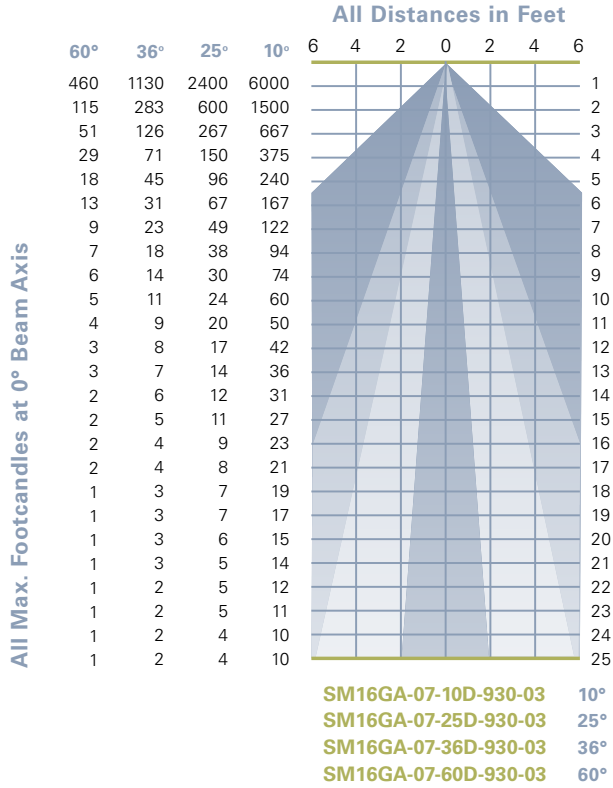
**SORAA LED GU10 Lamp**

**SM16GA-07-60D-930-03**

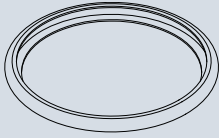
7.5 watt, 35000 hrs  
 Beam Spread to 50% of CBCP **60°**  
 Center Beam Candlepower **460**  
 Color Temperature (Kelvin) **3000**

*Abbreviations used:*

- CBCP = Center Beam Candlepower
- /C/ = Constant Color



# SSLGR16 • ACCESSORIES



## **BACKER RING AAA**

Stainless steel ring to hold thin film gels when no other size AAA accessories are being used.

# SOLID STATE • COLOR MEDIA

## COLOR MEDIA

As the foremost innovator in accent lighting, LSI offers a complete range of permanent fade-free glass color filters, which are available in nine stock diameters. All glass color filters are rimmed in a seamless aluminum ring and are slotted for heat expansion. In addition, LSI has available a Color Filter Sample Kit, Light Blocking Screens, OPTIVEX™ Glass UV Filters and Special Lenses. All are described in detail below.



Size	Diameter	LSI Fixture Series	Duocolor® Filters		No.	Color	% of Light Transmission
AAA	2 3/8"	LumeLEX® 2030/2031, SSLGR16	LSI two color glass filters blend to form one unique color that previously could only be achieved by using two separate color filters in the same fixture. Two color fringed shadows produced on background.		<b>No.</b>	<b>Glass Colors Used</b>	
AA	3"	LumeLEX® 2024 (with LX2024-Holder or LX2024-Barndoor), LumeLEX® 2026, LumeLEX® 2044	770	910/944	<b>902</b>	Medium Pink	36
A	3 1/2"	LumeLEX® 2060, SSL230	771	910/921	<b>903</b>	Deep Pink	37
C	4 3/4"	SSL238, SSLGR38, LumeLEX® 2084	772	910/930	<b>904</b>	Flesh Pink	73
			773	944/933	<b>906</b>	Pale Lavender	14
			774	921/930	<b>907</b>	Surprise Pink	19
			775	930/933	<b>908</b>	Lilac	21
			776	910/948	<b>910</b>	Warm Red	10
					<b>911</b>	Strawberry	6
					<b>912</b>	Ruby	4
					<b>913</b>	Magenta	1
					<b>914</b>	Light Amethyst	25
					<b>915</b>	Medium Amethyst	16
					<b>916</b>	Deep Amethyst	4
					<b>917</b>	Olive	18
					<b>918</b>	Light Green	68
					<b>920</b>	Medium Green	25
					<b>921</b>	Deep Green	7
					<b>922</b>	Silver green	65
					<b>923</b>	Yellow Green	49
					<b>924</b>	Emerald Green	12
					<b>925</b>	Light Turquoise	68
					<b>926</b>	Medium Turquoise	40
					<b>927</b>	Deep Turquoise	17
					<b>928</b>	Light Blue	34
					<b>930</b>	Medium Blue	3
					<b>932</b>	Daylight	59
					<b>933</b>	Gene Moore Blue	18
					<b>936</b>	Grey	56
					<b>937</b>	Light Blue Green	17
					<b>939</b>	Light Amber	68
					<b>940</b>	Medium Amber	48
					<b>941</b>	Deep Amber	43
					<b>942</b>	Straw	78
					<b>943</b>	Gold	87
					<b>944</b>	Canary Yellow	84
					<b>945</b>	Lemon	81
					<b>946</b>	Pumpkin	32
					<b>947</b>	Tangerine	20
					<b>948</b>	Orange	23
					<b>949</b>	Pink Gold	54
					<b>950</b>	Bronze	48
					<b>951</b>	Brass	11
					<b>952</b>	Autumn Tan	11
					<b>953</b>	Leaf Brown	19
					<b>954</b>	Butter Pecan	3
					<b>955</b>	Toasted Almond	1

### Notes:

1. Values given are approximate due to slight variations in glass color and thickness.

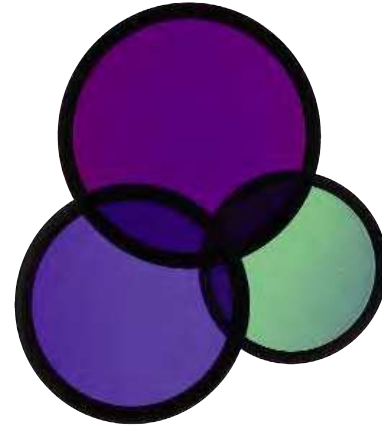
# SOLID STATE • COLOR MEDIA

## DICHROIC COLOR FILTERS

In addition to our complete line of glass color filters, LSI now offers dichroic glass color filters that achieve purer, more saturated, richer color by selective wavelength transmission. Since these filters reflect rather than absorb the unwanted color wavelengths, a higher intensity of colored light can be obtained with fewer or lower wattage fixtures. In addition, this selective transmission allows for very accurate color matching from filter to filter.

All standard LSI filter sizes are available in a wide palette of well chosen dichroic colors that can be used with all LSI fixtures that accept accessories.

LSI dichroic glass color filters have the added benefit of being rimmed for extra durability to allow for frequent usage without fear of breakage or edge chipping.



Size	Diameter	LSI Fixture Series	Technical Data	No.	Color	% of Light Transmission
AAA	2 3/8"	LumeLEX® 2030/2031, SSLGR16	Dichroic color filters are created in a vacuum chamber by multi-layer vapor deposits of different minerals onto low expansion, chemically resistant Borosilicate glass.	2001	Light Pink	69
AA	3"	LumeLEX® 2024 (with LX2024-Holder or LX2024-Barndoor), LumeLEX® 2026, LumeLEX® 2044	Deposits are made in alternating layers of varying microscopic thickness which allow very narrow color wavelengths to be selectively transmitted and all other wavelengths to be reflected.	2002	Medium Pink	43
A	3 1/2"	LumeLEX® 2060, SSL230	LSI does not recommend using dichroic color filters with lamps or fixtures that have beam spreads greater than 40° because a secondary color aura is created by the wide angular transmitted wavelengths that are different than the desired color wavelength.	2003	Hot Pink	11
C	4 3/4"	SSL238, SSLGR38, LumeLEX® 2084	Since there is mainly transmission and reflection of the color wavelengths by the dichroic filter and very little absorption, the dichroic filter can be used with many high temperature lights that normally would not accept color filters.	2004	Pale Pink	55
<b>Special Glass Color Filters</b>				2010	Deep Magenta	29
LSI will fabricate, on special order, dichroic glass color filters in most sizes and shapes not exceeding a 13" diameter circle overall.				2011	Lavender	24
<b>FS4 — Color Filter Samples</b>				2012	Vivid Magenta	31
To facilitate selection of glass color filters, LSI supplies a complete set of 1 3/4" X 1 3/4" labeled glass and dichroic samples in a handy carrying case.				2013	Lavender Accent	48
				2014	Lilac	37
				2015	Purple Fusion	12
				2020	Sky Blue	39
				2021	Sea Blue	39
				2022	Cyan	33
				2023	Light Blue Green	30
				2024	Primary Blue	24
				2025	Medium Red Blue	15
				2026	Deep Purple	16
				2027	Peacock Blue	53
				2028	Mediterranean Blue	20
				2029	Boost Blue	51
				2040	Light Yellow Green	64
				2041	Fern Green	47
				2042	Turquoise	35
				2043	Primary Green	31
				2044	Industrial Green	64
				2050	Yellow	80
				2051	Amber	71
				2052	Amber Blush	38
				2053	Bastard Amber	71
				2054	Goldenrod	63
				2055	Bright Straw	56
				2060	Medium Orange	51
				2061	Orange	44
				2070	Flame Red	27
				2071	Primary Red	25

# SSLGR16 SERIES • GELS

As the foremost innovator in accent lighting, LSI offers a complete range of pre-cut Gels to modify the color and distribution of light.



## SPREAD GELS

Size: AAA (60mm diameter)	Spread Gel
GELL1-AAA	1° Spread Gel
GELL5-AAA	5° Spread Gel
GELL10-AAA	10° Spread Gel
GELL20-AAA	20° Spread Gel
GELL30-AAA	30° Spread Gel
GELL40-AAA	40° Spread Gel
GELL60-AAA	60° Spread Gel
GELL80-AAA	80° Spread Gel
GELL30B5-AAA	30° by 5° Spread Gel
GELL40B2-AAA	40° by 0.2° Spread Gel
GELL60B1-AAA	60° by 1° Spread Gel
GELL60B10-AAA	60° by 10° Spread Gel
GELL75B45-AAA	75° by 45° Spread Gel
GELL90B60-AAA	90° by 60° Spread Gel
GELR101-AAA	Beam Softener

## COLOR GELS

Size: AAA (60mm diameter)	Gel Color	Size: AAA (60mm diameter)	Gel Color
GELR7-AAA	Pale Yellow	GELR3204-AAA	Half Blue
GELR12-AAA	Straw	GELR331-AAA	Shell Pink
GELR13-AAA	Straw Tint	GELR383-AAA	Sapphire Blue
GELR14-AAA	Medium Straw	GELR397-AAA	Pale Grey
GELR21-AAA	Golden Amber	GELR2001-AAA	Storaro Red
GELR25-AAA	Orange Red	GELR2004-AAA	Storaro Green
GELR26-AAA	Light Red	GELR2009-AAA	Storaro Violet
GELR27-AAA	Medium Red	GELR3202-AAA	Full Blue
GELR57-AAA	Lavender	GELR3206-AAA	Third Blue
GELR71-AAA	Sea Blue	GELR3216-AAA	Eighth Blue (Boosts 3200K to 3300K)
GELR72-AAA	Azure Blue	GELR3318-AAA	Tough 1/8 Minusgreen
GELR91-AAA	Primary Green	GELR3410-AAA	Roscosun (1/8 CTO) (Reduces 5500K to 4900K)
GELR97-AAA	Light Grey	GELR3441-AAA	Full Straw (CTS)
GELR98-AAA	Medium Grey	GELR3443-AAA	Quarter Straw (CTS)
GELR101-AAA	Light Frost	GELR4330-AAA	CalColor 30 Cyan
GELR104-AAA	Tough Silk	GELR4415-AAA	CalColor 15 Green
GELR119-AAA	Lt. Hamburg Frost	GELR4490-AAA	CalColor 90 Green
GELR121-AAA	Blue Diffusion	GELR4860-AAA	CalColor 60 Pink
GELR305-AAA	Rose Gold	GELR4890-AAA	CalColor 90 Pink
GELR312-AAA	Canary	GELR4930-AAA	CalColor 30 Lavender