

Chester County High School Career Planning Guide



2011-2012

TABLE OF CONTENTS

| | Page |
|-------------------------------|------|
| Graduation Requirements | 2 |
| 4x4 Schedule | 3 |
| Registration Information | 3 |
| End-of-Course Exams | 4 |
| Distance Learning | 4 |
| Attendance | 4 |
| Uniform Grading Scale | 5 |
| Tech Prep vs. College Prep | 6 |
| Choosing a Career Path | 7 |
| School of Business Management | |
| & Information Services | 8 |
| School of Arts & Humanities | 9 |
| School of Engineering, | |
| Manufacturing, and Industrial | |
| Technology | 10 |
| School of Health Science & | |
| Human Services | 11 |
| Business and Marketing | 12 |
| Completer Requirements | |
| Career Planning Worksheet | 14 |
| High School Athletics | 15 |
| Standardized Tests | 16 |
| College Admission Standards | 17 |
| Financial Aid | 18 |
| Chester County Career Center | 19 |
| School to Work | 19 |
| Course Offerings | 20 |
| English | 20 |
| Mathematics | 23 |
| Social Studies | 27 |
| Science | 30 |
| Physical Ed/JROTC/Health | 34 |
| Foreign Language | 36 |
| Fine Arts | 37 |
| Other Electives | 40 |
| Agricultural Science | 44 |
| Business and Marketing | 46 |
| Health and Human Services | 50 |
| Engineering, Manufacturing, & | 52 |
| Industrial Technology | |
| Dual & College Credit | 57 |

*Revised by committee: Chester County School
District
Winter 2011*

Graduation Requirements

In order to qualify for a South Carolina state high school diploma a student:

- Must have a total of 24 units of credit in state approved courses as shown in the table below,
- Must pass all sections of the SC Exit Examination (HSAP),
- Must pass a science course with an End of Course exam in biology to meet HSAP science requirements,
- Must earn one unit in a foreign language or one unit in an occupational course based on future career/college intentions,
- Must enroll in health to meet the requirements of the Comprehensive Health Act.

| South Carolina Graduation Requirements | |
|--|-----------|
| Course | Units |
| English | 4 |
| Mathematics | 4 |
| United States History | 1 |
| Social Studies Elective | 1 |
| American Government | 0.5 |
| Economics | 0.5 |
| Sciences | 3 |
| Physical Education or JROTC | 1 |
| Computer Science | 1 |
| Electives including Health | 7 |
| Foreign Language or Occupational Specialty | 1 |
| Total Units required | 24 |

Exit Exam Requirement: Students who do not meet standard on the English/Language Arts and/or Math subtest on the SC Exit Exam (HSAP) are required by law to take one or more Exit Exam remediation classes.

4x4 Block Schedule

All high schools in Chester County will be operating on a 4x4 schedule. Students will be able to take up to **4 classes per semester** for a total of 8 classes during a school year. This type of scheduling will allow students to place emphasis on four courses at a time and will be in alignment with other school districts in the area.

conferences with teachers as questions arise about student placement and performance.

Students will meet with their school counselor to complete registration for next year. Course selection will be made based on teacher recommendation, parental input, and student interest. To maximize the effectiveness of this meeting, students must be prepared by completing a registration worksheet prior to the meeting. Students will receive their registration worksheet during a registration orientation session. **The last day to make schedule request changes will be the last day of school in May 2011.**

Promotion / Retention Policy

To be promoted to the next grade level, a student must earn the units indicated in the following chart:

| | # of Units Previously Earned |
|---|---------------------------------|
| Grade 9: PROMOTION FROM MIDDLE SCHOOL | |
| Grade 10: 1 English, 1 Math & 3 other units | 5 |
| Grade 11: 2 English, 2 Math, 1 Science, 1 Social Studies & 4 other units | 10 |
| Grade 12: 3 English, 3 Math, 1 Science, 1 Social Studies & 8 other units | 16 |
| Graduation | 24 |

STUDENTS MAY NOT ALWAYS GET ALL THE COURSES THEY WANT AT THE EXACT TIME THEY REQUEST, BUT THEY WILL GET THE COURSES THEY NEED FOR GRADUATION.

Schedule Changes

ADDING/DROPPING COURSE POLICY

Students who withdraw from a course after the specified time of 3 days in a ½ unit course or 5 days in a full unit course shall be assigned a WF and the F will be calculated in the student's overall grade point average/ratio at a 62 grade average. It will not be possible to register for a new course after the first three days of a ½ unit course or the first five days of a full unit course.

Any Student who registers for an honors, Advanced Placement or Dual Credit course must sign a release form accompanied by their parent's signature stating that they understand that once assigned to these courses, they may not drop them except in the event of an emergency to complete a graduation requirement or in the event of a schedule conflict.

Registering for Classes for 2011-2012

The school counselor assists students in the planning of a high school program that will help them realize their educational and career goals. Each student has an individual conference with a counselor annually to review course selections and four year plans. Additional conferences may be held at any time during the year at the request of the student, parent or counselor. Parental involvement in the process of course selections can be critical to the academic success of a student. Parents are encouraged to set



The Education Accountability Act of 1998 requires the development of end-of-course examinations in gateway or benchmark courses. The program is called End-of-Course-Examination Program (EOCEP).

The examinations, which count 20 percent of the students' final grade in each gateway or benchmark course, currently include Algebra 1/Math for the Technologies 2, English 1, U.S. History and Constitution, and Biology I/Applied Biology 2 for the 2011-12 school year.

End of Course Exams are based on South Carolina Curriculum Standards for the subject taught and include multiple choice type questions.

For more information on the End-Of-Course-Examination Program, visit [Http://ed.sc.gov/](http://ed.sc.gov/)

South Carolina High School Assessment Program (HSAP)

According to the South Carolina Board of Education requirements for graduation, students must pass an exit exam in mathematics, reading, and writing. The first opportunity to take the Exit Exam is when the student is in his second year of high school after his initial enrollment in ninth grade. Students who do not pass one or more sections of the exam will have multiple opportunities to retake the needed section(s). The biology 1/applied biology II and U.S. History End-Of-Course examinations were added to cover the exit exam requirements in science and social studies.

Distance Learning



The school district offers classes through the use of our distance learning labs at all three area high schools. Courses offered in this format involve students participating with an instructor who teaches live from one of the distance learning labs while students are situated at their home school in the distance learning lab. Through the use of audio and video technology, students and the instructor are able to interact much like in the regular classroom.

ATTENDANCE

Students who miss more than six absences in a one unit course or three absences in a $\frac{1}{2}$ unit course may be denied credit. For all absences, students must have a parental excuse (limited acceptance), documentation from a licensed health practitioner or approval from the principal for a school sponsored activity or recognized religious holiday. A student who accumulates more than the acceptable total of absences in any course should contact the school regarding their options.

South Carolina Uniform Grading Scale (UGS)

The SC General Assembly directed the state board to develop a uniform grading scale. Because of the increased academic rigor and expectations, a student taking an honors level course will be given an additional .5 weighting for each grade. In the same way, a student taking an Advanced Placement or Dual Credit course will be given an additional 1.0 weighting. Those weightings are built into the conversion chart below. This scale was revised and adopted by the State Board of Education on September 13, 2006. The new scale became operative for students beginning with the 2007-2008 school year.

GRADE POINT CONVERSION TABLE

| Grade | Average | College Prep/ Work-Based | Honors | Advanced Placement/ Dual |
|----------|---------|-----------------------------|--------|--------------------------------|
| A | 100 | 4.875 | 5.375 | 5.875 |
| | 99 | 4.750 | 5.250 | 5.750 |
| | 98 | 4.625 | 5.125 | 5.625 |
| | 97 | 4.500 | 5.000 | 5.500 |
| | 96 | 4.375 | 4.875 | 5.375 |
| | 95 | 4.250 | 4.750 | 5.250 |
| | 94 | 4.125 | 4.625 | 5.125 |
| | 93 | 4.000 | 4.500 | 5.000 |
| B | 92 | 3.875 | 4.375 | 4.875 |
| | 91 | 3.750 | 4.250 | 4.750 |
| | 90 | 3.625 | 4.125 | 4.625 |
| | 89 | 3.500 | 4.000 | 4.500 |
| | 88 | 3.375 | 3.875 | 4.375 |
| | 87 | 3.250 | 3.750 | 4.250 |
| | 86 | 3.125 | 3.625 | 4.125 |
| | 85 | 3.000 | 3.500 | 4.000 |
| C | 84 | 2.875 | 3.375 | 3.875 |
| | 83 | 2.750 | 3.250 | 3.750 |
| | 82 | 2.625 | 3.125 | 3.625 |
| | 81 | 2.500 | 3.000 | 3.500 |
| | 80 | 2.375 | 2.875 | 3.375 |
| | 79 | 2.250 | 2.750 | 3.250 |
| | 78 | 2.125 | 2.625 | 3.125 |
| | 77 | 2.000 | 2.500 | 3.000 |
| D | 76 | 1.875 | 2.375 | 2.875 |
| | 75 | 1.750 | 2.250 | 2.750 |
| | 74 | 1.625 | 2.125 | 2.625 |
| | 73 | 1.500 | 2.000 | 2.500 |
| | 72 | 1.375 | 1.875 | 2.375 |
| | 71 | 1.250 | 1.750 | 2.250 |
| | 70 | 1.125 | 1.625 | 2.125 |
| F | 69 | 1.000 | 1.500 | 2.000 |
| | 68 | 0.875 | 1.375 | 1.875 |
| | 67 | 0.750 | 1.250 | 1.750 |
| | 66 | 0.625 | 1.125 | 1.625 |
| | 65 | 0.500 | 1.000 | 1.500 |
| | 64 | 0.375 | 0.875 | 1.375 |
| | 63 | 0.250 | 0.750 | 1.250 |
| | 62 | 0.125 | 0.625 | 1.125 |
| | 0-61 | 0.000 | 0.000 | 0.000 |
| | FA | 0.000 | 0.000 | 0.000 |

GRADING SCALE

A = 93-100

B = 85-92

C = 77-84

D = 70-76

F = 69 and below

Please Note:

Students who withdraw from a course after three days in a ½ unit course or five days in a full unit course shall be assigned a grade of 62 and 0 quality points. The F will be calculated in a student's overall grade point ratio.

If a student earns a D or F in a course, the course may be retaken in the same academic year and no later than the next academic year. Both the D or F earned and the grade earned in the retake will be calculated into the overall grade point ratio.

New Transfers

The Chester County School District will follow the 2007 South Carolina Uniform Grading Policy in assigning weights and converting to letter grades on transcripts for students who transfer into the district.

College Prep or Honors?

Each student must choose their pathway of study based on their intentions beyond high school. For students wishing to attend a two year technical institution, enter the Military, or to begin a career, Applied or College Prep coursework would be most appropriate. For students wishing to attend a four-year college or university, courses designated as College Prep or Honors would be most appropriate. Students should choose the most challenging courses in which they can be successful to best prepare them for all college levels.

Example of a Typical College Prep Pathway

Grade 9

English I
Algebra Tech I or Algebra I
Physical Science or Applied Biology I
World Geography
PE or JROTC
Freshman Focus
Keyboarding or Computer Elective
Elective Course(s)

Grade 10

English II
Algebra Tech II, Algebra I or Geometry
Applied Biology II or Physical Science
World History
Comprehensive Health
Computer requirement
Elective Course(s)

Grade 11

English III
Geometry or Algebra II
Science
U.S. History
Occupational Specialty
Elective Course(s)

Grade 12

English IV
Data Analysis, Algebra II, or Statistics
American Government
Economics
Occupational Specialty
Elective Course(s)

Example of a Typical Honors Pathway

Grade 9

Hon Eng. I
Hon Algebra II or Hon Geometry
Hon Biology I or Hon Physical Science
World Geography G/T or World History G/T
PE or JROTC
Keyboarding or Computer Elective
Foreign Language
Elective Course(s)

Grade 10

Hon. Eng. III
Hon Algebra II or Hon Geometry
Hon Chemistry 1
World History G/T or Gov't/Econ G/T
Foreign Language
Comprehensive Health
Computer requirement
Elective Course(s)

Grade 11

Hon Eng. IV or Advanced. Composition.
Hon Pre-Calculus
Hon Chemistry2 or Hon Biology 2
U.S. History (pre AP and AP)
Foreign Language
Elective Course(s)

Grade 12

, AP English, Dual Credit Eng.
Hon Calculus, AP Calculus, AP Statistics
Hon Physics or AP Biology
American Government G/T
Economics G/T
Foreign Language
Dual Credit Electives

Choosing a Career Path

Based on the Education and Economic Development Act of 2005, all Chester County students have now begun their focus on possible career paths. In cooperation with business leaders, all students will be provided with education, knowledge, and support from a Certified Career Development Facilitator, (CDF), along with CDF-trained school counselors to help them prepare for life after high school. Students in elementary school will begin with an introduction to possible career paths. During the middle school years, students will continue to explore possible careers and will choose a career cluster before the end of their eighth grade year. The CDF and school counselors will assist the students in making career choices through the use of career assessments and career counseling.

Beginning with the class of 2011, every student entering tenth grade must have declared a career major within one of four schools of study established by the Chester County School District. These schools include the School of Business and Marketing, the School of Arts and Humanities, the School of Engineering, Manufacturing, and Industrial Technology, and the School of Health Science and Human Services. Beginning with the eighth grade, each student will also complete an Individual Graduation Plan (IGP) that will be updated each year based on previously completed coursework and assessments. To complete a major, each student should select 4 elective courses which are designated under each major on the following pages. A student can also elect to choose a second major and complete coursework for more than one major. Choosing a major in high school will expose the student to possible career paths and help them be better prepared for their course of study of field of work beyond high school.

During their graduation ceremony, students will be recognized in the program by a designation which signifies their particular career school where a major was chosen and completed.

| Chester County School District Career Framework | | | |
|--|--|--|--|
| School of Business and Marketing | School of Arts and Humanities | School of Engineering, Manufacturing, and Industrial Technology | School of Health Science and Human Services |
| Majors | Majors | Majors | Majors |
| Administrative Support | Advanced Humanities (AP/Dual Credit/ College Credit) | Agriscience Mechatronics | Cosmetology |
| Business Administration | Communications | Automotive Technology | Sports Medicine |
| Financial Management and Accounting | Education | Conservation and Natural Resources | Health and Wellness |
| Hospitality and Tourism | English | Carpentry | Health Science Technology |
| Information Technology | Foreign Language | Drafting and Design | History and Humanities |
| Marketing and Public Relations | Graphic Communications | Electricity | Law and Legal Services |
| Networking and Telecommunications | Performing Arts | Engineering | Military Science |
| | Visual Arts | Machine Technology | Culinary Arts |
| | | Mathematics | |
| | | Science | |
| | | Welding Technology | |

School of Business Management and Information Systems

Major: Administrative Support

Elective Choices:

Business Law
 Oracle Programming I and II
 Integrated Business Apps. I and II
 Administrative Support Tech.
 Document Processing
 Desktop Publishing
 Multimedia
 Web Page Design & Dev.

Major: Business Administration

Elective Choices:

Public Speaking
 Entrepreneurship
 Personal Finance
 Integrated Business Apps. I and II
 Accounting I and II
 Business Law
 Advertising
 Digital Imaging

Major: Financial Management

Elective Choices:

Personal Finance
 Accounting I and II
 Integrated Business Apps. I and II
 Entrepreneurship

Major: Hospitality and Tourism

Elective Choices:

Public Speaking
 Entrepreneurship
 Marketing
 Hospitality & Tourism
 Marketing Management
 Culinary Arts I, II, and III
 Advertising

Major: Information Technology

Elective Choices:

Oracle Programming I and II
 Integrated Business Apps. I and II
 Desktop Publishing
 Multimedia
 Web Page Design and Dev.
 Digital Imaging

Major: Marketing & Public Relations

Elective Choices:

Marketing
 Public Speaking
 Fashion Merchandising
 Integrated Business Apps. I and II
 Marketing Management
 Entrepreneurship
 Personal Finance
 Advertising
 Graphics
 Digital Imaging

Major: Networking and Telecommunications

Elective Choices:

Public Speaking
 Networking I and II
 Broadcasting
 Journalism

A completed major requires 4 units of study selected from the elective choices. Only courses taken as electives can be used as part of a major.

School of Arts and Humanities

Major: Advanced Humanities (AP/Dual Credit/College Credit)

Elective Choices:

All Dual Credit Courses
 AP U.S. History
 Psychology
 Philosophy
 AP Biology
 AP Calculus
 AP English
 Teacher Cadet
 AP Statistics
 AP Psychology

Major: Communications

Elective Choices:

Public Speaking
 Creative Writing
 Advanced Composition
 Journalism
 Mass Communications
 Yearbook
 Broadcasting
 Multimedia
 Web Page Design & Dev.
 Advertising

Major: Education

Elective Choices:

Teacher Cadet
 Family Life Education
 Teacher Assistant
 Child Development
 Intro. To Elementary & Early Ch. Edu.
 Psychology
 Public Speaking
 Music Appreciation
 Elective in area of student interest

Major: English

Elective Choices:

AP English Composition/Literature
 Advanced Composition
 Creative Writing
 Journalism
 SAT/ACT Preparation
 Yearbook
 Broadcasting
 Public Speaking
 Teacher Cadet
 Drama
 African-American Literature

Major: Foreign Language

Elective Choices:

Spanish I, II, III, and IV
 French I, II, III, and IV
 Music Appreciation
 World History
 Geography
 Teacher Cadet

Major: Graphic Communications

Elective Choices:

Yearbook
 Multimedia
 Graphic Communications I, II, and III
 Advertising
 Broadcasting
 Art I, II, III, and IV
 Web Page Design & Dev.
 Desktop Publishing
 Architectural Design I, II
 Mechanical Design I, II

Major: Performing Arts

Elective Choices:

Music Appreciation
 Drama I, II, and III
 Marching Band I, II, III, and IV
 Public Speaking Jazz Band
 Concert Choir Percussion
 Show Choir Colorguard
 Piano Broadcasting I and II
 Chorus I and II Concert Band

Major: Visual Arts

Elective Choices:

Art I, II, III, and IV
 Yearbook
 Broadcasting
 Multimedia
 Web Page Design and Dev.
 Advertising
 Desktop Publishing
 Digital Imaging

School of Engineering, Manufacturing, and Industrial Technology

Major: Agriscience

Elective Choices:

Agricultural Mechanics and Technology
 Agricultural Science and Technology
 Landscape Technology
 Equipment Operation and Maintenance
 Horticulture for the Workplace I and II

Major: Automotive Technology

Elective Choices:

Automotive Technology I, II, and III

Major: Conservation & Natural Resources

Elective Choices:

Environmental Studies
 Landscape Technology
 Horticulture for the Workplace
 Environmental and Natural Res. Mgt.
 Science Elective

Major: Carpentry

Elective Choices:

Industrial Technology Education
 Carpentry I, II, and III
 Electricity I, II, and III
 Masonry I and II

Major: Drafting and Design

Elective Choices:

Architectural Design I, II
 Mechanical Design I, II
 Landscape Technology
 Mechatronics I and II

Major: Electricity

Elective Choices:

Electricity I, II, and III

Major: Engineering

Elective Choices:

Architectural Design I, II
 Mechanical Design I, II
 Mechatronics I and II

Major: Machine Technology

Elective Choices:

Machine Tech. I, II, and III

Major: Mathematics

Elective Choices:

AP Calculus
 SAT/ACT Prep.
 Personal Finance
 Calculus
 Probability & Statistics
 Pre-Calculus
 Data Analysis
 Accounting I and II
 Discrete Mathematics
 Oracle Programming I and II

Major: Science

Elective Choices:

Environmental Studies
 Physics
 AP Biology
 Earth Science
 Chemistry II
 Biology II
 Forensic Science

Major: Welding Technology

Elective Choices:

Welding Tech. I, II, and III

Major: Mechatronics

Elective Choices:

Mechatronics, I, II and III

School of Health Science and Human Services

Major: Cosmetology

Elective Choices:

Cosmetology I and II

Major: Sports Medicine

Elective Choices:

Sports Medicine I and II
Health Science I and II

Major: Health and Wellness

Elective Choices:

Introduction to Health Science Tech.
Weight Lifting
Aerobics
P.E. I, II, and III
Consumer Homemaking
Parenthood Education
First Aid/Sports Medicine
Family Life
Emergency Medical Services I and II
Health Science I and II

Major: Health Science

Elective Choices:

Introduction to Health Science
Health Science I and II
Sports Medicine I and II

Major: History and Humanities

Elective Choices:

Public Speaking
Psychology
Social Studies Electives
Sociology
African American History
Philosophy
Current Events
Fine Arts Electives

Major: Law and Legal Services

Elective Choices:

Public Speaking
Sociology
Law Education
Business Law
Current Events
Psychology
AP Biology
Criminal Justice
Forensic Science
Constitutional Law

Major: Military Science

Elective Choices:

JROTC I, II, III, and IV
Sociology
Psychology
Law Education
Current Events
Philosophy
Geography
World History

Major: Culinary Arts

Elective Choices:

Culinary Arts I and II

A completed major requires 4 units of study selected from the elective choices. Only courses taken as electives can be used as part of a major.

Business and Marketing Courses

| <u>Business and Marketing Completer Requirements</u> Career Majors and Pathways-4 Units required for Completer Status | |
|---|---|
| <u>Administration & Information Support-520400</u> Required Electives: Keyboarding Integrated Business Apps I and II Recommended Electives: Accounting Administrative Support Technology Business and Electronic Comm. Business/Marketing Internet Apps Computer Programming Desktop Publishing Digital Input Technologies Document Processing Information Technology Foundations Multimedia Virtual Enterprise Webpage Design/Development | <u>Management-520201</u> Required Electives: Keyboarding Computer Apps or Integrated Business Apps Accounting I Entrepreneurship Recommended Electives: Business and Personal Finance Business Computer Mathematics Business Law E-Commerce International Business and Marketing Marketing Marketing Management Virtual Enterprise |
| <u>Business Financial Management & Accounting-520300</u> Required Electives: Keyboarding Computer Apps or Integrated Business Apps Accounting I and II Recommended Electives: Business and Electronic Comm. Business and Personal Finance Business Computer Mathematics Business Law Entrepreneurship International Business and Marketing Virtual Enterprise | <u>Small Business Management-520703</u> Required Electives: Keyboarding Computer Apps or Integrated Business Apps Virtual Enterprise I and II Recommended Electives: Accounting I Business and Marketing Internet Apps Business and Personal Finance Business Computer Math Business Law E-Commerce Entrepreneurship Marketing Virtual Enterprise III and IV Webpage Design/Development |
| <u>Interactive Media-110801</u> Required Electives: Keyboarding Multimedia Webpage Design and Development Recommended Electives: Computer Applications Computer Programming I Desktop Publishing Graphic Communications I Integrated Business Apps. Oracle Development PL/SQL Oracle Management/SQL Webpage Design and Development II | <u>Programming/Software Development-521202</u> Required Electives: Keyboarding Computer Programming I and II Recommended Electives: Computer Applications Computer Programming III and IV Computer Service Tech. InfoTech Foundations Integrated Business Apps Networking I Oracle Dev. PL/SQL Oracle Management/SQL Oracle Java Webpage Design and Dev. |
| <u>Academy and Information Technology Nat'l Academy Foundation-521206</u> Required Electives: Keyboarding Integrated Business Apps I and II Computer Programming I Recommended Electives: Courses as determined by the National Academy Foundation (NAF) | <u>Fashion Design and Apparel Construction-200301</u> Required Electives: Fashion Design and Apparel Construction I and II Recommended Electives: Business and Electronic Communication Clothing and Textiles I and II Entrepreneurship Fashion Merchandising Housing and Home Furnishings Introduction to Fashion Design and Apparel Construction Marketing |

Business and Marketing Courses

| <u>Business and Marketing Completer Requirements</u> Career Majors and Pathways-4 Units required for Completer Status | |
|---|--|
| <u>Business Analysis-520305</u> Required Electives: Keyboarding Computer Apps or Integrated Business Apps Accounting I Business and Personal Finance Recommended Electives: Business and Marketing Internet Apps Business and Electronic Comm. Business Computer Mathematics Business Law E-Commerce International Business and Marketing Virtual Enterprise | <u>E-Marketing-520208</u> Required Electives: Keyboarding Computer Apps or Integrated Business Apps Marketing E-Commerce Recommended Electives: Advertising Business and Electronic Communications Business and Marketing Internet Applications Entrepreneurship International Business and Marketing Marketing Management I Sports and Entertainment Marketing Web Page Design and Development |
| <u>Marketing Communications, Management, & Promotion-521491</u> Required Electives: Keyboarding Computer Apps or Integrated Business Apps Marketing Plus one: Marketing Management, Fashion Merchandising, HPM, Sports & Entertainment Marketing Recommended Electives: Accounting I Business and Marketing Internet Apps Business and Personal Finance Business Computer Math Business Law E-Commerce Entrepreneurship Marketing Virtual Enterprise III and IV Webpage Design/Development | <u>Global Marketing -521403</u> Required Electives: Keyboarding Computer Apps or Integrated Business Apps Marketing or International Bus/Mktg Global Markets (Pilot course '04-05) Recommended Electives: Business and Marketing Internet Apps Business Electronic Communication Business Computer Mathematics E-Commerce Entrepreneurship |
| <u>Networking Systems-521204</u> Required Electives: Keyboarding Networking I and II Recommended Electives: Computer Applications Computer Programming I Computer Service Technology Core Electronics Digital Input Technologies Home Systems Technology Information Technology Foundations Integrated Business Apps I Networking III and IV | <u>Information Support and Services-150402</u> Required Electives: Keyboarding Computer Tech I and II Recommended Electives: Computer Applications Computer Programming I Core Electronics Digital Input Technologies E-Commerce Home Systems Technology Info. Tech. Foundations Integrated Business Apps. Networking I Technical Writing |

High School Athletics

The Student-Athlete must receive a medical examination each year (365 days) by a duly licensed physician, nurse practitioner or physician assistant. See your coach for more information.

Eligibility To **participate in high school interscholastic athletic activities**, students in grades 9-12 must achieve an **overall passing average** in addition to the following:

To be eligible in the first semester a student must pass a minimum of five Carnegie units applicable toward a high school diploma during the previous year. At least two units must have been passed during the second semester or summer school.

To be eligible during the second semester the student must meet one of the following conditions:

- a. Meet first semester eligibility requirements and pass the equivalent of four ½ units during the first semester.
- b. Pass the equivalent of five ½ units during the first semester.

On the 4 X 4 block schedule, which Chester County School's operate on, the following would apply:

- a. If eligible first semester, must earn 2 units.
- b. If not eligible first semester, must earn 2 ½ units.

College-Bound Athlete

To play sports as a freshman in NCAA Divisions I and II, you must meet specific standards. You must graduate from high school and make at least a **2.0 grade-point average** (based on a 4.0 scale). The grade-point average requirements are for the 16 core courses (for 2008 graduates or later), not the overall GPA.

NCAA Division I Core Academic Course Requirements

- 4 years English
- 3 years math (Algebra I or higher)
- 2 years social science
- 2 years natural or physical science (including one lab course)
- 1 year of an additional course in English, math or natural or physical science
- 4 additional years of academic courses in any of the above areas, or in foreign language, computer science, philosophy or comparative religion

NCAA Division II Core Academic Course Requirements

- 3 years English
- 2 years math
- 2 years social science
- 2 years natural or physical science (including one lab course, if offered by the high school)
- 2 years of an additional course in English, math or natural or physical science
- 2 additional years of academic courses in any of the above areas, or in foreign language, computer science, philosophy or comparative religion
- In Division II, the student must achieve the minimum required SAT score (820) or ACT score (68) before his/her first time college enrollment in order to qualify.

Initial-Eligibility Clearinghouse Certification

If the student intends to participate in NCAA Divisions I or II athletics as a freshman, then he/she must register and be certified by the NCAA Initial-Eligibility Clearinghouse by the end of his Junior year in high school.

Fee Waivers

High school counselors may waive the Clearinghouse fee if the student has previously qualified for and received a waiver of the ACT or SAT fee.

Additional Information

You can access the Clearinghouse website at www.ncaaclearinghouse.net or via Links provided from the NCAA website.

Standardized Tests

Standardized test scores are important predictors of students' potential for success in college. Test score requirements for admission vary greatly by college type. Students should ask their guidance counselor for assistance in investigating test score requirements for all colleges under consideration.

What is the PLAN?

The PLAN is the American College Testing Program's counterpart to the PSAT. Chester County School District students will take PLAN or PSAT in the fall of their sophomore year. PLAN helps tenth graders build a solid foundation for future academic and career success by focusing attention on career preparation and improving academic achievement. It helps students measure their current academic development, explore career/training options, and make plans for the remaining years of high school and post-graduation years.

What is the PSAT?

The Preliminary Scholastic Aptitude Test (PSAT) combines multiple-choice type questions with a writing section. It measures verbal and mathematical reasoning abilities important for academic performance in college. It consists of five sections: two verbal, two mathematical, and one writing. The test measures a student's ability to reason with facts and ideas rather than to recall and recite facts. PSAT scores can be used to estimate performance on the Scholastic Aptitude Test (SAT).

It is recommended that college bound high school students take the PSAT in October of their sophomore year. College-bound juniors should take the test again the following year. The PSAT provides students with the opportunity to experience a test made up of questions taken from previously administered SAT tests. The PSAT is not a college admissions examination. It poses no risk to a student's future admissions prospects. **The PSAT is the qualifying examination for juniors who wish to compete for scholarships offered through the National Merit Scholarship Corporation. Sophomore scores may be used for admission to one of the Governor's School programs.**

What is the ACT?

The American College Test Program (ACT) is a comprehensive, guidance-oriented service that helps colleges, high schools, and students transition from high school to college. Students participate in the program by completing an educational/biographical questionnaire, an interest inventory, and four tests of educational development in English, mathematics, social studies, and natural sciences, plus a recommended writing test. After analyzing the information obtained, ACT prepares reports for use by students, high schools, and colleges in career and college planning, admissions, and placement, and academic advising. More than 2,700 colleges and universities and other agencies accept ACT scores in lieu of SAT scores. Nationwide, more students take the ACT than the SAT. The ACT is an achievement test. Achievement tests often reward the student who works hard with high scores more than an aptitude test like the SAT.

What is the SAT?

The SAT is a multiple-choice aptitude test made up of separately timed critical reading, writing, and mathematical sections. The critical reading section tests the students' ability to read carefully and to extract the key information and ideas from what they read; the writing section tests the students' understanding of the structure of the English sentence, and the students' ability to write an organized supportive essay. The mathematical section tests the students' ability to solve problems involving arithmetic reasoning, algebra, and geometry (The preparers of the test assume that you have completed Algebra III). Juniors taking English III or above and Algebra III or above should take the SAT one or more times during March, May, or June of their junior year. These students should also plan to retake the SAT during October or November of their senior year. Small increases in scores are often sufficient enough to enable a student to meet rising admissions score requirements or scholarship eligibility minimums. Additionally, almost all colleges will make admissions or scholarship decisions based upon the student's best combination of critical reading, writing, and math scores taken from multiple test dates. The SAT is offered several times during the year at locations throughout the area.



What is the COMPASS?

The COMPASS is designed to help students entering two-year community and technical colleges succeed in their educational goals. The COMPASS is a computerized/adaptive test by ACT. York Technical College will administer the COMPASS to students for \$10 for the first test administration. A fee of \$50 is required for any re-test. A picture ID is required.

What is the ASVAB?

The Armed Services Vocational Aptitude Battery (ASVAB) is a career interest inventory that assists students in their career choices. It is required for students entering the military but may be taken by any student wishing to explore career options.



College Admission Standards

The requirements for a South Carolina diploma should **not** be interpreted as satisfying the admissions requirements for a 4-year state supported college. Each college determines its own GPA and ACT/SAT requirements for admission. The following are the requirements mandated by the South Carolina Commission of Higher Education as minimum for admission to 4-year state supported colleges:

| | |
|---------------------------|---|
| English | 4 units at the College Preparatory Level |
| Mathematics | 4 units to include Algebra I (Applied Mathematics I & II combined will also count), Algebra II, and Geometry. |
| Laboratory Science | 3 units, taken in at least two different fields from biology, chemistry, or physics |
| Foreign Language | 2 or more units of the same foreign language |
| Social Science | 3 units to include one unit of U.S. History, ½ unit of Economics, and ½ unit of Government |
| Academic Electives | 4 units from 3 different fields (Computer Science, English, Fine Arts, Foreign Language, Humanities, Laboratory Science, Advanced Mathematics, or Social Sciences) |
| Physical Education/ JROTC | 1 unit of either |
| Fine Arts | 1 unit from any medium |

Deciding On A College

No later than the spring of their junior year, students should begin gathering information about as many colleges as they can so that they may have sufficient information to determine which ones are best suited to their own goals, needs, and abilities. A student should gather data related to EDUCATIONAL PROGRAMS, LOCATION, SIZE, COST, ADMISSION REQUIREMENTS, and FINANCIAL AID PROGRAMS. Please see your school counselor to discuss your options.

HONOR GRADUATES AND JUNIOR MARSHALS

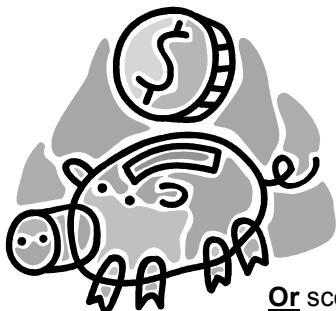
Honor graduates will be those seniors with a minimum GPA of 3 with this GPA being determined beginning with the freshman year and ending with the fourth nine weeks of the senior year. To be eligible to be Valedictorian or Salutatorian, a student must have been enrolled at the graduating high school for **at least two** complete school years, be a true senior and MAY NOT be a graduating junior. Students who have a minimum GPA of 3.75 following the first semester of the junior year shall serve as Junior Marshals. Early Graduates are not eligible to serve as Junior Marshals.

EARLY GRADUATES: To be considered for early graduation (Junior graduating after only 3 years of high school or January graduate in 3.5 years), the student must petition in writing by application to and be approved by the **Principal** on or before the first day of school in what would become the graduation year.

APPLYING FOR FINANCIAL AID

Until a student has applied for admission, been accepted, and completed the Free Application for Federal Student Aid (FAFSA), he/she and his/her family cannot know if the school is affordable. No school will review a student's financial record for aid until the student has been admitted. Parents should, however, complete the financial aid forms after January 1 so that they can be assessed for financial aid when the student has been admitted.

Scholarships are available from a variety of sources and students are encouraged to seek and apply for them; however, there are very few scholarships that will cover the majority of the costs of a college education. Scholarship information is provided by the School Counselor. **Students and parents are cautioned against scholarship services which promise to supply a list of scholarships for a fee.**



SOUTH CAROLINA FINANCIAL AID PROGRAM

PALMETTO FELLOWS

Where Available: Public & private 4-year in-state institutions

Value: Max of \$6,700

Early award requirements (December of Senior Year)

Score at least a 1200 on the SAT or 27 on the ACT; Earn at least a 3.5 GPA on UGS and be in the top 6% of your Sophomore or Junior Class

Or score 1400 SAT or 32 ACT, minimum 4.0 GPA on UGS at the end of your Junior year.

Final Award Requirements (June of Senior Year)

Score 1200 on the SAT or 27 on the ACT; Earn at least a 3.5 GPA on UGS and be in the top 6% of your graduating class. Or score 1400 on the SAT or 32 on the ACT and earn a 4.0 GPA on UGS at end of the Senior year.

LIFE SCHOLARSHIP

Where Available: public or private 4-year state institutions

Value: Public= Maximum of \$4,700, plus \$300 for books

Private=average cost-of-tuition at the state's 4-yr public institutions (not to exceed \$4,700 plus a \$300 book allowance)

4-year institution Requirements:

Must meet two out of three of the following:

-1100 SAT or 24 ACT

-3.0 GPA

-Top 30% of Graduating Class

2-year institution Requirements:

-3.0 GPA

HOPE SCHOLARSHIP

Where Available: 4-year and 2 -year in-state public or private and technical colleges

Value: maximum of \$2,800, plus \$300 book allowance

Requirements: 3.0 GPA

-Must not be eligible for a Palmetto Fellow or LIFE scholarship

NOTE: This is a one- time award.

**MOST COLLEGES REQUIRE FAFSA TO BE
COMPLETED IN ORDER TO ACCEPT
SCHOLARSHIP AWARDS**

Life Scholarship recipients are not eligible to use this scholarship money to complete remedial level work required by a college for entry. LIFE and Palmetto Fellows Scholarship enhancements may be given at the end of the College Freshman year for students majoring in math or science.

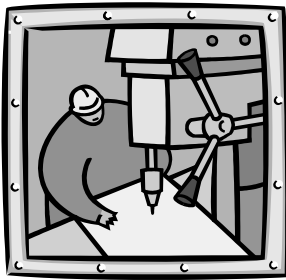
LOTTERY TUITION ASSISTANCE

Where Available: Public & private 2-year institutions

Value: Portion of tuition (amount dependent on number of eligible participants & total funding available)

Requirements: SC resident for at least one year

- Be enrolled in at least 6 credit hours each semester towards a certificate degree, Diploma Program or AA/AS degree program- File a Free Application for Federal Student Aid (FAFSA) form- Must not be a LIFE recipient



Chester County Career Center

The policy of the Chester County Career Center is to be an open admission institution following rules and regulations set by local, state, and federal governing agencies.

The Career Center serves students from Chester, Lewisville, and Great Falls High Schools. Programs in many occupational areas are offered at the Career Center. Most programs are three years in length.

The Career Center offers equal opportunity in educational activities without regard to race, color, national origin, religion, sex, age or handicap. The school faculty and administration strongly encourage all interested students to participate in opportunities at the Career Center.

The Chester County School District has articulation agreements with York Technical College. Students may apply for Technical Advanced Placement (TAP) in their degree programs. The TAP credit is based upon demonstrated competencies. Students can also earn college credit through EXCELS in the areas of drafting, carpentry, welding, and health science. Credit is transferable anywhere in the United States. Costs vary by program. It is strongly recommended that students take their two-year technical coursework during their 11th and 12th grades so that the material is current as they begin coursework at the technical school level.

Work-Based

The goal of the Work-Based program is to broaden academic-based educational opportunities with work-based knowledge, which will better prepare students for employment when they leave the educational system. Whether a student is college-prep or work-based, the ultimate goal is to find meaningful, productive employment. Some of the work-based program options, which may be available, are described below.

Apprenticeships allow students who meet the criteria to learn and earn in a work place setting. Selected students are supervised and trained by worksite mentors during their junior and senior years. These students may then qualify for full-time employment with the company upon graduation from high school as they pursue a post-secondary degree.

Internships provide a “hands on” learning experience in the area of the student’s career interest. It is tied to academic instruction and the applicant must meet eligibility requirements. A contract outlines the expectations and responsibilities of all parties. Internships may vary widely in length and may be paid or unpaid. Credit may be granted if hour guidelines are met.

Cooperative Education allows students to combine classroom instruction with paid work experience through enrollment in an occupational program. Co-op students must meet eligibility requirements, and receive high school credit for their work experience. A contract outlines the expectations and responsibilities of all parties.

Service Learning provides students the opportunity to combine school-based learning with work-based volunteer activities. Volunteer projects must involve an instructional component and can be individual or group. Community agencies and advisors are encouraged.

Mentoring allows students to learn from a person in the chosen field either through presentations or more formal options.

Shadowing allows student to explore occupational choices through observing worksite activities for any portion of a day.

For more information regarding Work-Based programs you may contact Debbie Parsons, District Work-Based Program Coordinator, at the Chester County Career Center.

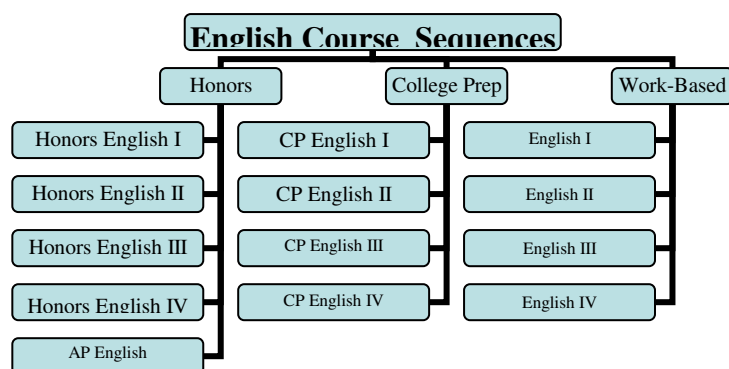
Chester County School District

Course Offerings

Please Note: These are the proposed offerings for the district. Any course that does not have adequate enrollment may not be offered during a particular term. Students enrolled in a canceled course will be notified and possible replacements will be explored.

English Courses

The sequence of courses for English may be flexible based on an individual student's needs or interests. Please consult with your child's principal and school counselor.



HONORS ENGLISH I – 301100HW

Grade: 8, 9

Prerequisite: Teacher recommendation and placement test

Value: 1 Unit

Course Description: Honors English I is designed for the advanced college preparatory student. Students entering this course should be proficient readers and writers. This course includes a survey of world literature, advanced writing assignments, oral presentations, and documented research. An EOC test is given at the end of the course, which counts 20% of the final grade. Summer reading assignments are also a required component of this course.

ENGLISH I – 301100CW

Grade: 9

Prerequisite: Teacher recommendation

Value: 1 Unit

Course Description: College Prep English I is designed for the college bound student. Students entering this course should be good readers and writers. This course includes a survey of world literature, writing assignments, oral presentations, and documented research. An EOC test is given at the end of the course, which counts 20% of the final grade.

ENGLISH I – 301101CW

Grade: 9

Value: 1 Unit

Course Description: English I is designed for the student planning to enter a technical school or the workforce after graduation. This course includes a survey of world literature, writing assignments, oral presentations, and documented research. An EOC test is given at the end of the course, which counts 20% of the final grade.

English Courses

HONORS ENGLISH II – 301200HW

Grade: 9, 10

Prerequisite: Honors English I or teacher recommendation and placement test

Value: 1 Unit

Course Description: Honors English II is designed for the advanced college preparatory student. Students entering this course should be proficient readers and writers. This course includes a survey of World literature, advanced writing assignments, oral presentations, and documented research. Summer reading assignments are also a required component of this course.

ENGLISH II – 301200CW

Grade: 10

Prerequisite: English I/teacher recommendation

Value: 1 Unit

Course Description: College Prep English II is designed for the college bound student. Students entering this course should be good readers and writers. This course includes a survey of world literature, advanced writing assignments, oral presentations, and documented research.

ENGLISH II – 301201CW

Grade: 10

Prerequisite: English I/teacher recommendation

Value: 1 Unit

Course Description: English II is designed for the student planning to enter a technical school or the workforce after graduation. This course includes a survey of world literature, advanced writing assignments, oral presentations, and documented research.

HONORS ENGLISH III – 301300HW

Grade: 10, 11

Prerequisite: Honors English II or teacher recommendation and placement test

Value: 1 Unit

Course Description: Honors English III is designed for the advanced college preparatory student. Students entering this course should be proficient readers and writers. This course includes a survey of American literature, advanced writing assignments, oral presentations, and documented research. Summer reading assignments are also a required component of this course.

ENGLISH III – 301300CW

Grade: 11

Prerequisite: CP English II/teacher recommendation

Value: 1 Unit

Course Description: College Prep English III is designed for the college bound student. Students entering this course should be good readers and writers. This course includes a survey of American literature, advanced writing assignments, oral presentations, and documented research.

ENGLISH III – 301301CW

Grade: 11

Prerequisite: English II

Value: 1 Unit

Course Description: English III is designed for the student planning to enter a technical school or the workforce after graduation. This course includes a survey of American literature, advanced writing assignments, oral presentations, and documented research.

English Courses

HONORS ENGLISH IV – 301400HW

Grade: 11

Prerequisite: Honors English III

Value: 1 Unit

Course Description: Honors English IV is designed for the advanced college preparatory student. Students entering this course should be advanced readers and writers. This course will better prepare students planning to take AP English in the senior year. Students completing this course will be well read and have a wealth of knowledge based on the analysis and evaluation of literature. This course includes a survey of British literature, advanced writing assignments, oral presentations, and documented research. Summer reading assignments are also a required component of this course.

ENGLISH IV – 301400CW

Grade: 12

Prerequisite: CP English III

Value: 1 Unit

Course Description: College Prep English IV is designed for the college bound student. Students entering this course should be good readers and writers. This course includes a survey of British literature, advanced writing assignments, oral presentations, and documented research. This course will be the culminating preparation for college reading and writing.

ENGLISH IV – 301401CW

Grade: 12

Prerequisite: English III

Value: 1 Unit

Course Description: English IV is designed for the student planning to enter a technical school or the workforce after graduation. This course includes a survey of British literature, advanced writing assignments, oral presentations, and documented research.

AP ENGLISH – 307000AW

Grade: 12

Prerequisite: Honors English III or Honors English IV

Value: 1 Unit

Course Description: Advanced Placement English Literature and Composition is a college-level course for academically gifted high school students. The course focuses on extensive reading and oral and written analysis of world literature using literary devices. The course in Advanced Placement English Literature and Composition prepares students to take the Advanced Placement test in the spring semester. Successful completion of the AP test with a minimum score of three on a five-point scale may result in college credit.

CREATIVE WRITING-303200CW

Grade: 12

Prerequisite: English I and II

Value: 1 Unit

Course Description: This course is designed for the college-bound student. It will focus on creative writing and an intensive study of grammar, mechanics, and usage. Numerous creative writing projects will be required. Students should have access to a computer outside of class to complete writing assignments



Mathematics Courses

HONORS MATH COURSE SEQUENCE

| | | | | |
|--------------------------------------|-------------------------------------|--|---|---|
| 8 TH GRADE Algebra I H | 9 TH GRADE Geometry H | 10 TH GRADE Algebra II H SAT Prep (suggested) | 11 TH GRADE Pre-Calculus H AP Statistics | 12 TH GRADE Calculus AB H AP Calculus AB |
|--------------------------------------|-------------------------------------|--|---|---|

COLLEGE PREP MATH COURSE SEQUENCE

| | | | |
|------------------------------------|--|--------------------------------------|---|
| 9 th GRADE Algebra I | 10 TH GRADE Geometry SAT Prep | 11 TH GRADE Algebra II | 12 TH GRADE Probability and Statistics Pre-Calculus Calculus AP Statistics |
|------------------------------------|--|--------------------------------------|---|

STUDENTS WITH BELOW BASIC ON THE 8TH GRADE PASS TEST

| | | | |
|--|---|------------------------------------|---|
| 9 TH GRADE Math Strategies I (1 st Sem) Algebra Tech I (2 nd Sem) | 10 TH GRADE Algebra Tech 2 (1 st Sem) Math Strategies 2 (2 nd Sem) | 11 TH GRADE Geometry | 12 TH GRADE Data Analysis |
|--|---|------------------------------------|---|

PROBABILITY AND STATISTICS– 414100CW

Grade: 10, 11, 12

Prerequisite: Algebra II

Value: 1 Unit

Course Description: This course provides a basic introduction to the concepts of probability and statistics. Topics covered in probability will include the fundamental counting principle, combinations and permutations, odds, expectations, and sample spaces. Topics in statistics will include data collections and analysis, mean, median, mode, range, frequency tables, graphs, and predictions.

ADVANCED PLACEMENT STATISTICS- 417100AW:

Grade: 11, 12 **Value:** 1 unit

Prerequisite: B or higher in Alg. II CP and successful completion of Geometry CP, or successful completion of Honors Alg. II and Honors Geometry.

Course Description: Students in this class engage in exploratory analysis of data, using graphical and numerical techniques. Data sets are collected using statistical design methods. Students produce appropriate models using probability, simulation, and statistical inference.

Mathematics Courses

HONORS ALGEBRA I – 411100HW

Grade: 8, 9

Prerequisite: Teacher recommendation, placement test

Value: 1 unit

Course Description: Honors Algebra I includes the study of algebraic concepts including operations with real numbers and polynomials, relations and functions, matrices, creation and application of linear functions and relations, linear regression, and an introduction to nonlinear functions. Appropriate technology, from manipulative to calculators and application software is used regularly for instruction and assessment. This course is designed to help students develop the ability to reason abstractly. Students are expected to demonstrate proficiency with the graphics calculator. For each session of classroom instruction, the student is expected to spend time daily outside of class on assignments, review, and preparation. An EOC exam will be given at the end of the course.

ALGEBRA I – 411100CW

Grade: 9, 10, 11

Prerequisite: Teacher recommendation

Value: 1 Unit

Course Description: Algebra I is the first level of college preparatory math, and is essential to the future study of higher mathematics. Emphasis is placed upon solving linear equations and inequalities, basic operations and factoring of polynomials and applications to real-world problems. An EOC exam will be given at the end of the course.

ALGEBRA TECH I – 314100CW

Grade: 9

Prerequisite: Teacher recommendation

Value: 1 Unit

Course Description: This course introduces students to Algebra concepts discussed during the first half of the Algebra I course. Topics include operations with rational numbers and integers, solving equations and inequalities, graphing linear equations, basic geometry concepts, and basic statistics. Special emphasis is placed upon real-life applications through hands-on laboratory activities and work problems.

HONORS ALGEBRA II – 411200HW

Grade: 9, 10, 11

Prerequisite: Algebra I, teacher recommendation and entrance exam

Value: 1 Unit

Course Description: This course is designed to offer the able and ambitious student academic opportunities which will challenge him to perform at the highest level of mathematical excellence. An in-depth study of algebra is provided, through problem solving and application. Topics covered include complex numbers, conic sections, rational exponents, logarithms and quadratic equations. Emphasis is placed upon the use of the graphing calculator. Independent study is required.

ALGEBRA II – 411200CW

Grade: 9,10,11,12

Prerequisite: Algebra I or Algebra Tech II

Value: 1 Unit

Course Description: This course provides a thorough review of Algebra I concepts. New topics introduced include complex numbers, rational exponents, logarithms and quadratic equations.

Mathematics Courses

ALGEBRA TECH II – 314200CW

Grade: 10, 11, 12

Prerequisite: Algebra I or Algebra for the Technologies I

Value: 1 Unit

Course Description: This course focuses on the same concepts as Algebra I. Students will study linear equations, graphing, systems of linear equations, probability and statistics, exponents, and polynomials and factoring. Emphasis will be placed on hands-on activities and real world applications of the mathematical concepts. Note: Students who complete Algebra for the Technologies II will be taking the state mandated end-of-the-year Algebra I test.

HONORS GEOMETRY – 412100HW

Grade: 10, 11

Prerequisite: Honors Algebra II, teacher recommendation

Value: 1 Unit

Course Description: This course is designed to introduce the mathematically gifted student to logical thinking. Definitions and conjectures are used to stress facts about lines, segments, angles, planes, triangles, polygons, circles and solids. Students are introduced to the ideas of congruence, similarity, and proof. Independent study is required.

GEOMETRY – 412100CW

Grade: 10,11,12

Prerequisite: Algebra I with at least a C average, teacher recommendation

Value: 1 Unit

Course Description: This course is designed to introduce the student to logical thinking. Definitions and conjectures are used to stress facts about lines, segments, angles, planes, triangles, polygons, circles and solids. Students are introduced to the ideas of congruence, similarity, and proof.

GEOMETRY – 412101CW

Grade: 10, 11, 12

Prerequisite: Algebra Technologies I and II or Algebra I

Value: 1 Unit

Course Description: Students explore relationships and concepts dealing with lines, segments, angles, planes, triangles, polygons, circles and solids. Geometry skills are made relevant by showing how the skills are used in the workplace and by teaching problem solving through hands-on laboratory activities and occupationally specific work problems.

DATA ANALYSIS – 314400CW

Grade: 11, 12

Prerequisite: Algebra II or Geometry

Value: 1 Unit

Course Description: This tech prep course reinforces the application of mathematics through an activity oriented, problem solving approach. Students will examine relevant and challenging personal and job related financial issues such as quality control, statistics, accounting investments, taxes, loans and credit. Mathematical models, algebraic concepts and statistical methods will be used to analyze data and solve problems.

Mathematics Courses

PRE-CALCULUS – 413100CW

Grade: 11, 12

Prerequisite: Geometry, Algebra II

Value: 1 Unit

Course Description: This course is designed to prepare students for college-level mathematics. Topics covered include functions, polynomials, exponents, and trigonometry. Students are taught to recognize the relevance of real-life applications.

HONORS PRE-CALCULUS – 413100HW

Grade: 11, 12

Prerequisite: Honors Algebra II, Honors Geometry

Value: 1 unit

Course Description: This advanced course is designed for the mathematically gifted student in preparation for college level mathematics. Topics covered will include linear relations and functions, trigonometric functions, sequences and series, polar coordinates and complex numbers, and exponential and logarithmic functions. Independent study and application are an integral part of the course.

CALCULUS – 413500CW

Grade: 12

Prerequisite: Pre-Calculus

Value: 1 unit

Course Description: This course is designed to introduce the college bound student to concepts dealing with rate of change, inequalities, functions, graphs, limits and derivatives. The student will develop an understanding of these concepts and a familiarity with the formulas used in order to prepare them for college level calculus.

HONORS CALCULUS – 413500HW

Grade: 12

Prerequisite: Pre-Calculus

Value: 1 Unit

Course Description: This course is designed to introduce the student to concepts dealing with rate of change. Concepts covered include functions, graphs, limits, derivatives, and integrals. An understanding of these concepts, familiarity with special formulas needed, and the ability to use these formulas are essential to the course. Emphasis is placed upon the use of the graphing calculator.

AP CALCULUS – 417000AW

Grade: 12

Prerequisite: Honors Pre-Calculus

Value: 1 Unit

Course Description: This advanced course is designed to be the equivalent of an entry-level college calculus course. Students will receive in-depth instruction in the areas of differential and integral calculus. Topics include properties of functions, limits and continuity, and derivative/ anti-derivative formulas and their applications. Special emphasis is placed upon the natural logarithm and exponential functions. Students will be required to take the Advanced Placement test in the spring semester. Successful completion of the test may result in college credit.



Social Studies Courses

HONORS/G/T WORLD GEOGRAPHY(GS) – 331000HW

Grade: 9

Prerequisite: Teacher recommendation or proficient/advanced scores on PACT ELA

Value: 1 Unit

Course Description: This college preparatory course is designed to prepare students to attend a major four year university. Students will focus on higher level thinking skills and writing to use to study both physical and cultural geography. Emphasis will be placed upon the interrelationships between people's cultures and their environments, thus stimulating interest in current world affairs and how other countries relate to the United States.

WORLD GEOGRAPHY (GS) – 331000CW

Grade: 9

Value: 1 Unit

Course Description: World Geography is a course designed for the student who wishes to learn about the physical and cultural geography of the world around them and how the United States fits into the global perspective. This course is designed for those seeking general high school credit as well as those who are seeking preparation for college.

HONORS /G/T WORLD HISTORY – 336000HW

Grade: 9, 10

Prerequisite: Teacher recommendation or proficient/advanced on PACT ELA

Value: 1 Unit

Course Description: Honors World History is designed for the college-bound student who desires to attend a major university. This course focuses upon the forces which have shaped history from the beginning of civilization to the present. Students will develop higher order thinking and writing skills while gaining an awareness of the continuity of history and the process of historical cause and effect.

WORLD HISTORY – 336000CW

Grade: 10

Value: 1 Unit

Course Description: This course addresses the study of historical concepts and how they relate to geographic change. It focuses on historical events from the beginning of time and integrates political, cultural and economic themes.

AP UNITED STATES HISTORY – 337200AW

Grade: 11 or 12

Prerequisite: Teacher recommendation and Honors U.S. History and Constitution

Value: 1 Unit

Course Description: This course provides an opportunity for academically talented students who excel in honors and advanced courses. A survey of United States History will be studied in great depth. An examination of political, social economic, cultural and foreign policy trends in America's development is emphasized. Students will be involved in interpretation of historical events and trends through the use of documents, essay writing, and special projects. Students will be required to take the advanced placement examination in the spring semester. Success on the AP exam may render college credit. An EOC exam will be given at the end of the course.

Social Studies Courses

HONORS/ G/T UNITED STATES HISTORY – 332000HW

Grade: 11

Prerequisite: Teacher recommendation

Course Description: This course offers the college preparatory student the opportunity to interpret and evaluate historical events in United States History. The course is geared toward discovery, inquiry, lecture, and basic research. The course seeks to aid the student in finding solutions in the changing world around him while becoming more aware and appreciative of the history being made today. An EOC exam will be given at the end of the course.

UNITED STATES HISTORY – 332000CW

Grade: 11

Value: 1 Unit

Course Description: This course is for the student seeking general high school credit or preparation for post-secondary education. Students will gain an awareness of the contributions made to our nation by men and women from all racial and ethnic groups. Emphasis will also be placed upon writing skills and current events. An EOC exam will be given at the end of the course.

HONORS/ G/T US GOVERNMENT – 333000HH

Grade: 10, 11, 12

Prerequisite: Teacher recommendation or proficient/advanced PACT ELA scores

Value: ½ Unit

Course Description: This course deals with the structure and operations of the three levels of government as well as the American political and legal systems. The course is geared toward enabling a student to function effectively in our democratic society and should be taken by those students who plan to attend a major four year university.

US GOVERNMENT – 333000CH

Grade: 10, 11, 12

Prerequisite: None

Value: ½ Unit

Course Description: This course will give the student a description of how the three levels of government function. The student will gain knowledge which will enable him to effectively participate in his government as a citizen in a democratic society.

HONORS/ G/T ECONOMICS – 335000HH

Grade: 10, 11, 12

Prerequisite: Teacher recommendation or proficient/advance PACT ELA scores

Value: ½ Unit

Course Description: This course, designed for students seeking to attend a major four year college or university, explores the role of the individual in the free enterprise system and how the functions of our economic system are affected by government, private enterprise, and global market situations. The course will introduce students to economic principles, theories, and consumer issues.

ECONOMICS – 335002CH

Grade: 10, 11, 12

Value: ½ Unit

Course Description: This course is designed to give students a basic knowledge of the free enterprise system. An understanding of our economic system will be gained through a study of the vocabulary of economics, as well as through the study of such topics as consumer issues, supply and demand, inflation, and trade issues.

Social Studies Courses

PSYCHOLOGY – 334001CW

Grade: 10, 11, 12

Value: 1 Unit

Course Description: Designed for the college bound student, this course will acquaint the student with the basic psychological principles which affect and influence daily life such as the foundations of behavior, human development, perception, and learning.

ADVANCED PLACEMENT PSYCHOLOGY-

Grade: 12

Prerequisite: Current or previous enrollment in honors program/ recommendation from current English/SS teacher.

Value: 1 unit

Course Description: This course is designed to introduce the systematic and scientific study of the behavior and mental processes of human beings and other animals. Included is a consideration of the psychological facts, principles, and phenomena associated with each of the major sub-fields within psychology. Students will learn about the ethics and methods psychologists use in their science and practice.

SOCIOLOGY – 334500CH

Grade: 10, 11, 12

Value: ½ Unit

Course Description: This course explores the methods people use to interact with each other. Students will focus upon socialization, institutions, social stratification and social change. Students will come to view themselves in the larger social context.

LAW EDUCATION – 333600CH

Grade: 9, 10, 11, 12

Value: ½ Unit

Course Description: This course is designed to investigate the realities of our legal system and how it functions in real-life situations. Students will be better prepared to participate intelligently in our legal system. Topics covered include civil and criminal law, substance abuse, school law, and right/responsibilities in the workplace. The process from arrest to indictment to trial will be analyzed.

AFRICAN AMERICAN HISTORY – 339901CW

Grade: 10, 11, 12

Value: 1 Unit

Course Description: This course is designed for any student who is interested in learning more about African American History, culture, and its impact on current American society and ethnic issues. Activities are included to reinforce basic reading and writing skills.

CURRENT EVENTS – 333700CH

Grade: 9, 10, 11, 12

Value: ½ Unit

Course Description: This elective course provides students the opportunity for reading, writing, discussion, and debate of current local and world events.

Science Courses

Honors Science Course Sequence

| <u>9th Grade</u> | → | <u>10th Grade</u> | → | <u>11th Grade</u> | → | <u>12th Grade</u> |
|---|---|-------------------------------------|---|--|---|---|
| Honors Biology I Honors Physical Science | | Honors Chemistry I | | Honors Chemistry II Honors Biology II Honors Physics AP Biology | | Honors Biology II AP Biology Honors Physics |

College Prep Science Sequence

| <u>9th Grade</u> | → | <u>10th Grade</u> | → | <u>11th Grade</u> | → | <u>12th Grade</u> |
|------------------------------------|---|-------------------------------------|---|--|---|--|
| Biology I Physical Science | | Physical Science Biology I | | Advanced Chemistry I Chemistry I Physics Tech Earth Science Biology II | | Advanced Chemistry II Physics Earth Science Biology II AP Biology Environmental Studies |

Work-Based Science Course Sequence

| <u>9th Grade</u> | → | <u>10th Grade</u> | → | <u>11th Grade</u> | → | <u>12th Grade</u> |
|--|---|--|---|--|---|--|
| Applied Biology Physical Science Biology I | | Physical Science Biology I Applied Biology I or II | | Chemistry I Physics Tech Environmental Studies Applied Biology II | | Applied Biology II Physics Tech Earth Science Biology II Environmental Studies |

PHYSICAL SCIENCE – 321101CW

Grade: 9, 10

Value: 1 Unit

Course Description: Physical Science covers the basic laws and ideas that explain the physical world. It is an excellent introductory course to basic principles of chemistry and physics with emphasis on energy and its relationship to matter. This course does not count as a laboratory course for college. Passage of this course was required for graduation beginning with the class of 2010; however, this may change to Biology during the summer 2010 pending Federal approval. An EOC exam **MAY** be given at the end of the course.

PHYSICAL SCIENCE – 321100CW

Grade: 9, 10

Prerequisite: Teacher Recommendation; Algebra I concurrent or previous

Value: 1 Unit

Course Description: This course is intended to provide a background for enrollment in chemistry and physics. It is geared toward the college-bound student who has a mathematical aptitude. Topics covered include physics, chemistry, matter, energy, forces and motion, sound and light, and nuclear reactions. Laboratory investigations and projects are included to reinforce the material. This course does not count as a laboratory course for college. Passage of this course was required for graduation beginning with the class of 2010; however, this may change to Biology during the summer of 2010 pending Federal approval. An EOC exam **MAY** be given at the end of the course.

Science Courses

HONORS PHYSICAL SCIENCE – 321100HW

Grade: 9,10

Prerequisite: PACT Science at proficient or advanced and teacher recommendation; Honors Algebra I

Co-requisite: Honors Algebra II and/or Honors Biology I if sequence allows

Value: 1 Unit

Course Description: Honors Physical Science is designed to serve as a foundation for other high school science courses. It is a laboratory course (minimum of 30% hands-on investigation) that integrates principles of chemistry and physics. It emphasizes inquiry-based learning, process skills, and higher-order thinking skills. Honors students will be required to do outside reading, projects, and/or research to enhance the classroom curriculum. Passage of this course is required for graduation beginning with the class of 2010, however could change during this school year.

EARTH SCIENCE – 326500CW

Grade: 10, 11, 12

Value: 1 Unit

Course Description: This science is designed to give basic understanding of the principles, concepts and terminology related to the study of the earth and the atmosphere. Topics and principles covered include geology, hydrology, oceanography, meteorology and astronomy.

BIOLOGY I – 322100CW

Grade: 9, 10

Prerequisite: Teacher Recommendation and Physical Science if sequence allows

Value: 1 Unit

Course Description: This laboratory course will give college bound students an understanding of the science process skills necessary for planning and conducting investigations and experiments. The students will receive a background in the areas of cell biology, genetics, ecology, matter, energy, and organization; behavior and regulation; and evolution. This course provides numerous opportunities for students to develop science process skills, critical thinking, and an appreciation for the nature of science through inquiry-based learning experiences. Investigative hands-on laboratory activities that address the high school inquiry standards are an integral part of this course. An EOC exam will be administered for the 2010-11 school year; however, pending Federal approval will determine whether or not it will count 20 percent for this school year.

HONORS BIOLOGY I – 322100HW

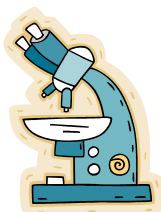
Grade: 9, 10

Prerequisite: PACT Science at proficient or advanced and teacher recommendation; Honors Algebra I

Co-requisite: Honors Algebra II and Honors Physical Science (to be taken during the same school year)

Value: 1 Unit

Course Description: Honors Biology I is a laboratory-based course designed to familiarize the student with the major concepts of biological science: the cell; molecular basis of heredity; biological evolution; interdependence of organisms; matter, energy, and organization in living systems; and behavior and regulation. This course provides numerous opportunities for students to develop science process skills, critical thinking, and an appreciation for the nature of science through inquiry-based learning experiences. Investigative hands-on laboratory activities that address the high school inquiry standards are an integral part of this course. Honors students will be required to do outside reading, projects, and/or research to enhance the classroom curriculum. An EOC exam will be administered for the 2010-11 school year; however, pending Federal approval will determine whether or not it will not count 20 percent.



Science Courses

BIOLOGY II – 322200CW

Grade: 11, 12

Prerequisite: Biology I and Teacher Recommendation

Value: 1 Unit

Course Description: This laboratory course will extend the principles of Biology I, with special emphasis in the areas of botany, classification of organisms, comparative anatomy and physiology, and animal behavior.

HONORS BIOLOGY II – 322200HW

Grade: 11 or 12

Prerequisite: Biology I honors, Chemistry I honors or Teacher recommendation

Value: 1 Unit

Course Description: This course is structured primarily to aid students who plan to enter such fields as medicine, dentistry, pharmacy, nursing, veterinary medicine, and other science related fields. It will provide an in-depth study into the area of anatomy and physiology, biochemistry, bio-ethics, cellular respiration, genetics, bacteriology, ecology, botany and cytology which are encountered in college. In preparation for continued studies this course is lab intensive requiring students to show initiative and motivation. Honors student will be required to do outside reading, projects, and/or research to the classroom curriculum.

AP BIOLOGY – 327200AW

Grade: 11, 12

Prerequisite: Biology I honors, Chemistry I honors, or Teacher Recommendation by AP Instructor

Value: 1 Unit

Course Description: A laboratory-based course covering eight topics: chemistry of life, the cell, cellular energetics, heredity, molecular genetics, evolutionary biology including diversity of organisms, structure and function of plants and animals, and ecology. Honors Biology II is taught during the first semester of the year.

APPLIED BIOLOGY I – 322600CW

Grade: 9, 10, 11, 12

Prerequisite: Teacher Recommendation

Value: 1 Unit

Course Description: This tech prep course presents biology in the context of cell biology, cell reproduction, genetics, matter, energy, organization, and the environment. It uses an application oriented approach to the teaching of biology while emphasizing problem solving, decision-making, and inquiry-based learning..

APPLIED BIOLOGY II – 322700CW

Grade: 10, 11, 12

Prerequisite: Applied Biology I

Value: 1 Unit

Course Description: This tech prep course is an extension of Applied Biology I. It uses an application-oriented approach to the teaching of biology while emphasizing problem solving, decision-making, and inquiry-based learning. This course presents biology in the context of behavior and regulation, evolution, and interdependence of organization. It is intended for students who are either planning on attending a technical college or entering the work force directly after high school. An EOC exam will be given during the 2010-11 school year; however, it may not count 20 percent pending Federal approval of the new course sequence.

Science Courses

HONORS CHEMISTRY I-323100HW

Grade: 10, 11, 12

Prerequisite: Honors Physical Science, Honors Biology I; Honors Algebra I

Value: 1 Unit

Course Description: Honors Chemistry I is a laboratory course which introduces the student to strategies and techniques for studying matter and its changes, with special emphasis on atomic structure, physical chemistry, and stoichiometry at an advanced level. The course requires strong mathematics abilities and an interest in pursuing a college major in the fields of science, engineering, or medicine.

CHEMISTRY I – 323100CW

Grade: 11, 12

Prerequisite: CP Physical Science and Biology I; Algebra II

Value: 1 Unit

Course Description: Chemistry I is a laboratory course, which will introduce the student to strategies and techniques for studying matter and its changes, with special emphasis on atomic structure, physical chemistry, and stoichiometry.

HONORS CHEMISTRY II-323200HW

Grade: 11, 12

Prerequisite: Honors Biology I, Honors Chemistry I, Honors Algebra II

Value: 1 Unit

Course Description: This course is designed for the student who plans to major in a science related field at a four-year college. It is an academically rigorous course which uses complex math and problem solving skills to understand and apply chemical concepts and principles at an advanced level.

CHEMISTRY II – 323200CW

Grade: 11, 12

Prerequisite: Biology I and Chemistry I; Algebra II

Value: 1 Unit

Course Description: This course is designed for the student who plans to major in a science related field at a four-year college. It is an academically rigorous course which uses complex math and problem solving skills to understand and apply chemical concepts and principles.

CHEMISTRY FOR THE TECHNOLOGIES - 323600CW

Grade: 11, 12

Prerequisite: Physical Science & Biology I or Applied Biology I; Algebra I

Value: 1 Unit

Course Description: Chemistry for the Technologies is a student-centered, activity-based, issue-oriented chemistry curriculum that encourages cooperative learning. It is a course for students who do not plan to major in a math or science field in college.

HONORS PHYSICS – 324100HW

Grade: 11, 12

Prerequisite: Honors Physical Science, Honors Algebra II, Honors Chemistry I

Value: 1 Unit

Course Description: Physics is a laboratory course with emphasis on the study of motion, energy, thermodynamics, electricity, and electronics. The study of physics requires an extensive mathematical background, and is designed for students who plan to pursue post-secondary studies in the sciences or engineering.

Science Courses

PHYSICS FOR THE TECHNOLOGIES -324300CW

Grade: 11, 12

Prerequisite: Physical Science, Math Tech II or Algebra I

Value: 1 Unit

Course Description: Physics for the Technologies is an up-to-date technologically sophisticated course in applied physics. The curriculum uses a unifying approach in the study of the basic energy systems: mechanical, fluid, electrical and thermal. This approach is achieved by showing how the principles of force, work, rate and resistance operate in the basic energy systems.

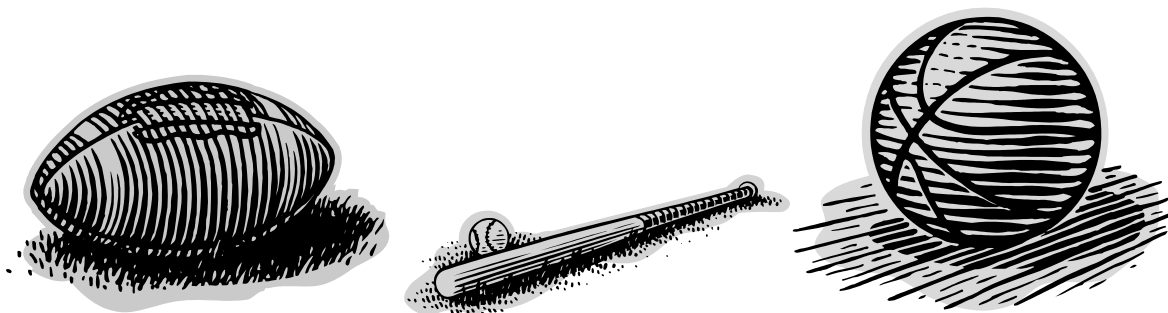
ENVIRONMENTAL STUDIES – 326100CW

Grade: 11, 12

Prerequisite: Physical Science and Biology I or Applied Biology I

Value: 1 Unit

Course Description: Environmental Studies is designed to give a basic understanding of the principles, concepts and terminology related to environmental issues and their impact on society. Emphasis is placed on our need for a use of energy and non-energy resources and the application of different sciences to complex environmental decisions. Laboratory and/or field study are important elements of this course.



Physical Education/ JROTC/ Health Courses

PHYSICAL EDUCATION I – 344100CW

Grade: 9

Value: 1 Unit

Course Description: All required physical education classes will include a Personal Fitness component. The personal fitness component will consist of developing an understanding of the five health related fitness components. Students will also be expected to apply the Principles of Training. Lastly, students will construct and design their own personal fitness program. The Fitness Gram will be administered twice during the course to assess and evaluate fitness levels of each student. Also, each required physical education course will consist of developing competence in two different movement forms. Students may choose from the following courses:

Personal Fitness-Football/Strength Training
Personal Fitness-Basketball/Strength Training
Personal Fitness-Basketball/Badminton
Personal Fitness-Basketball/Aerobics
Personal Fitness-Soccer/Badminton
Personal Fitness-Soccer/Strength Training
Personal Fitness-Volleyball/Aerobics

Physical Education/ JROTC/ Health Courses

ADVANCED PHYSICAL EDUCATION (Physical Education II/Weight Training)- 344200CW

Grade: 9, 10, 11, 12

Prerequisite: Physical Education I or permission from instructor/principal

Value: 1 Unit

Course Description: This elective course is designed for the serious and dedicated physical education student. The course objectives will be to develop skill-related fitness, health-related fitness, and the specific movement form at an advanced level. Students may choose these Physical Education II courses:

- Basketball for the Female Athlete-This course will develop advanced basketball skills, as well as, specific strength training methods for female students.
- Advanced Basketball-This course is designed for the student who enjoys the game of basketball and is conscious of its aerobic benefits. This course is also designed to increase skill levels and health-related fitness.
- Advanced Strength Training- This course is designed for the student who enjoys lifting weights and is conscious of its muscular fitness benefits. This course is also designed to increase strength levels and health-related fitness.
- Advanced Baseball- This course is designed for the student who enjoys baseball. The objective is to develop advanced baseball skills as well as specific training methods for those who participate.

JROTC IA- 375100CW/ JROTC IB-375101CW/ JROTC IIA-375200CW/ JROTC IIB-375201CW/ JROTC IIIA- 372300CW/ JROTC IIIB-372301CW/ JROTC IVA-375400CW/ JROTC IVB-375401CW

Grade: 9, 10, 11, 12

Prerequisite: Students must be able to participate in physical conditioning and military drill activities. Students cannot enroll in JROTC II, III, or IV without having completed the previous level(s).

Value: 1 Unit each

Course Description: The JROTC program is a cooperative effort on the part of the school and the United States Army. The program aims to prepare cadets for responsible leadership roles while making them aware of their rights, responsibilities and privileges as American citizens. Cadets are required to wear a uniform once each week. The uniform will be provided. After school activities are available but not required.

COMPREHENSIVE HEALTH – 340200CH

Grade: 9, 10, 11, 12

Prerequisite: None

Value: ½ Unit

Course Description: This required course is planned and carried out with the purpose of maintaining, reinforcing or enhancing the health related skills, and health attitudes of children and youth that are conducive to their good health and that promote wellness, health maintenance and disease prevention and includes reproductive health education and pregnancy prevention education.

CAREER EXPLORATION 1-4- 379970CW-379973 (JAG)

Grade: 9, 10, 11, 12

Prerequisite: Selection by JAG teacher and committee

Value: 1 unit

Description: Selected students are involved in job placement and career planning as part of the State Department's At-Risk program model. Students are encouraged to remain in school and are offered work-based learning experiences.



Foreign Language Courses



SPANISH I – 365100CW

Grade: 9, 10, 11, 12

Prerequisite: None

Value: 1 Unit

Course Description: This introductory course to the Spanish language is aimed at giving students the basic skills of listening, speaking, reading and writing, and an appreciation of Spanish culture. This course prepares students for Spanish II.

SPANISH II – 365200CW

Grade: 10, 11, 12

Prerequisite: Spanish I

Value: 1 Unit

Course Description: This course is designed to help students gain proficiency in speaking, listening, reading, and writing and to enhance their knowledge of Spanish culture. This course prepares students for Spanish III.

SPANISH III – 365300HW/ SPANISH IV – 365400HW

Grade: 11, 12

Prerequisite: Spanish II, Teacher Recommendation

Value: 1 Unit

Course Description: This course is designed to help students achieve a higher level of proficiency. Emphasis will be placed on reading, writing, speaking and listening. History, geography, culture, and literary selections are included.



Fine Arts Courses

ART I – 350100CW

Grade: 9, 10, 11, 12

Value: 1 Unit

Course Description: This course requires students to make informed responses to works of art, nature, and other objects by analyzing, interpreting, and judging. Students will explore and create various art forms in a variety of media. Students will study, understand, and apply principles and elements of design in art works.

ART II – 350200CW

Grade: 10, 11, 12

Prerequisite: Art I

Value: 1 Unit

Course Description: This course is for students who excel in art. Students study specific styles and media and demonstrate greater depth and sophistication in knowledge, concepts, and skills. A student portfolio is required.

ADVANCED ART III – 350300CW; ADVANCED ART IV – 350400CW

Grade: 10, 11, 12

Prerequisite: Teacher recommendation and Art II or Art III

Value: 1 Unit each

Course Description: This course is designed for students who are interested in learning more about art careers and possibly pursuing a career in art. Emphasis would be placed on independent studies, portfolio presentation, and visiting local artists.

DRAMA I – 452100CW

Grade: 9, 10, 11, 12

Value: 1 unit

Course Description: This course is an introductory course in which the student is tasked with improvisation, mime, monologue and dialogue, and puppetry.

DRAMA II – 452200CW

Grade: 9, 10, 11, 12

Prerequisite: Drama I

Value: 1 Unit

Course Description: Drama II is a continuation of the introductory course, and the student is introduced to small skits, one-act plays, scene blocking and stagecraft—each class will be tasked with completion of one major project per quarter that will be performed in front of a live audience.

ADVANCED DRAMA – 452300CW (DRAMA III)

Grade: 10, 11, 12

Prerequisite: Audition

Value: 1 Unit

Course Description: This class pushes the students to three independent projects that affect the school, community, and region. Each project is created by the student with teacher approval and must meet state criteria set forth at the beginning of term. Grade for each project is considered for the individual and the group.

Fine Arts Courses

PIANO LAB – 454100CH

Grade: 9, 10, 11, 12

Value: ½ Unit

Course Description: This course covers the history of the instrument, beginning piano technique, music notation, reading and playing skills. A variety of piano music is studied. The course will progress in difficulty to include the study of advanced music notation, chords, and four part harmonies.

CHORUS I-354100CW/CHORUS II-354200CW

Grade: 9, 10, 11, 12

Value: 1 Unit each

Course Description: This course is a basic study of vocal and choral techniques, music notation and reading skills. It serves as an introduction to choral sight reading and sight singing. Many types and styles of choral music are explored.

CONCERT CHOIR – 354300CW

Grade: 10, 11, 12

Prerequisite: Audition

Value: 1 Unit

Cost: Travel expenses and uniform costs

Course Description: This course provides a review and continued study of vocal and choral techniques. Harmony as related to monophonic, homophonic and polyphonic choral literature, sight reading/singing, and studies of musical style through performance are all key components of this course. Students will participate in all State, Governor's Choir, community events, and other state and local activities.

SHOW CHOIR – 354400CW

Grade: 10, 11, 12

Prerequisite: Audition

Value: 1 Unit

Cost: Travel expenses and uniform costs

Course Description: This course is the study of vocal and choreographed techniques and skills. Students must be able to memorize and perform advanced choral techniques, as well as complex dance movements. A wide variety of musical styles will be performed. Students will participate in All State, Governor's Choir, community events, and other state and local activities.

STRINGS – 355100CW

Grade: 9,10,11,12

Prerequisite: Audition with Strings Instructor

Course Description: A basic study of strings techniques, music notation and reading skills. The course is designed for those students with previous Strings instruction. The focus of the class is on great works and composers.

Fine Arts Courses

MARCHING BAND I– 353000CW/ BAND II-353200CW/ BAND III- 353300CW/ BAND IV-353400CW

Grade: 9,10,11,12

Prerequisite: Previous band experience, performance audition, and participation in summer band camp

Value: 1 Unit

Course Description: These courses are designed for beginning to advanced students who wish to improve their musical skills. Students will learn basic music theory, music terminology and scales. They will be expected to take part in after school rehearsals and to participate in **all** competitions, parades and performances.

CONCERT BAND I– 353001CW/ BAND II-353201CW/ BAND III- 353301CW/ BAND IV-353401CW

Grade: 9,10,11,12

Prerequisite: Previous band experience

Value: 1 Unit

Course Description: These courses are designed for beginning to advanced students who wish to improve their musical skills. Students will learn and practice fundamentals of the instrument. Additionally, they will learn basic music theory, music terminology and scales. They will be expected to take part in some after school activities including practice, band/all-state auditions, and participate in all concerts or performances during the Spring Semester.

BEGINNING BAND – 353001CW

Grade: 9, 10, 11, 12

Value: 1 Unit

Course Description: Beginning Band is for students who have never been enrolled in a band class before. They may sign up for this class to learn to play a brass or woodwind instrument. Students who have previous band experience may take this class to learn a new instrument. This class will require some after school performances. Some students will be selected to perform with the Concert Band, Marching Band, and Jazz Band.

PERCUSSION – 353002CW

Grade: 9, 10, 11, 12

Prerequisite: Previous percussion experience in a band class; approval of Band Director

Value: 1 Unit

Course Description: The percussion class is designed for percussion students who wish to improve their musical skill on percussion instruments ranging from snare drum to mallet instruments. Rudiments, scales, music theory, and music terms will be taught. Students will be expected to learn solos as well as ensemble music.

JAZZ BAND – 353400CW

Grade: 9, 10, 11, 12

Prerequisite: Invitation only

Value: 1 Unit

Course Description: The objective of the Jazz Band class is to educate students in the idiom of jazz. Students will study the concepts of jazz performance including articulations, rhythms, improvisation, tone production and techniques.

MARCHING COLOR GUARD - 459921CW

Grade: 9, 10, 11, 12

Prerequisite: Approval of Band Leader

Value: 1 Unit

Course Description: This course is offered for color guard members in the schools marching band. Students will learn basic fundamentals. Flag routines will be coordinated for performances and competitions during this class.

Fine Arts Courses

MUSIC APPRECIATION – 456100CH/456100CW

Grade: 9,10,11,12

Value: ½ or 1 Unit (school-based decision)

Course Description: This course is a non-performance music course that encourages students to view music in a social context and as an ingredient of the student's life. It uses history as a resource for understanding how and why music has fulfilled a basic need in the student's life and will utilize a variety of music for study in this course. In this course students will develop an appreciation for, understanding of and respect for music by recognizing characteristics, acquiring a basic knowledge, and developing basic musical skills.

Other Elective Courses

FRESHMAN FOCUS/HS101 – 339915CH/CW

Grade: 9

Value: 1/2 Unit or 1Unit (School-based decision)

Course Description: This class is intended to ease freshmen into the high school community. The main topics of this course include a study of self, family, community, and the world. Students will learn transferable skills such as study techniques, how to work effectively in a team, and how to get the most out of one's high school years. This elective is open to first-time freshmen only.

MATH LAB I – 319902CW/ MATH LAB II – 319904CW

Grade: 10, 11, 12

Prerequisite: Below standard on 8th grade PASS or high school exit exam

Value: 1 Unit

Course Description: This course is designed for the student whose test scores indicate a need for further emphasis in specific basic skills areas. Placement in this course is made only by test scores and teacher/administrative recommendations. Teachers work with a student's specific weaknesses while providing review of basic mathematical concepts. THIS COURSE CARRIES ELECTIVE CREDIT ONLY.

LANGUAGE ARTS LAB 309902CW

Grade: 10, 11, 12

Prerequisite: Below standard on 8th grade PASS or high school exit exam

Value: 1 Unit

Course Description: This course is designed for the student whose test scores indicate a need for further emphasis in specific basic skills area. Placement in this course is made only by test scores. Teachers work with a student's specific weaknesses while providing review of reading and writing skills. THIS COURSE CARRIES ELECTIVE CREDIT ONLY.

MATH STRATEGIES – 319901CW/MATH STRATEGIES II – 319903CW

Grade: 9, 10

Value: 1 Unit

Course Description: This course is intended for students who did not achieve basic or above on the 8th grade PACT or who were not successful in their last mathematics course. Basic math skills and pre-algebra concepts are a major part of this class. It is designed to assist in the student's preparation to take the HSAP in spring of the 10th grade.

LANGUAGE STRATEGIES I – 309901CW/ LANGUAGE STRATEGIES II-309902CW

Grade: 9 , 10

Value: 1 Unit

Course Description: This course is intended for students who want to improve their reading level. Included in this course is the reading of high-interest reading materials and age-appropriate reading strategies. Students who did not achieve basic or above on the reading portion of the PASS at middle school are encouraged to take this course.

Other Elective Courses

ATHLETIC TRAINING/FIRST AID – 349901CW

Grade: 10, 11, 12

Value: 1 Unit

Course Description: Following the curriculum set by the American Red Cross, students will learn ways to prevent injury and/or illness; recognize and know what to do in the event of an emergency; and be able to provide basic care for injury and/or sudden illness until the victim can receive professional medical help. Special emphasis will be placed on sports injuries and rehabilitation during the second half of the semester.

BROADCASTING I -459903CW

Grade: 10, 11, 12

Value: 1 Unit

Course Description: This class uses the AVIO Non-linear editor (NLE) to introduce students to the basics of video production. Students will learn pre-production, production and post-production elements in the overall production/work pipeline. The primary emphasis is to teach the operation and techniques of digital video camera “videography”. Student projects will be published on VHS and DVD.

BROADCASTING II- 459904CW; BROADCASTING III-459905CW

Grade: 11, 12

Value: 1 unit

Course Description: These courses will extend the student’s knowledge of the production pipeline and videography techniques through use of “Windows Movie Maker” software. Advanced multi-media elements are introduced in Level II and continued through Level III with the extension of NLE knowledge through use of Adobe’s Premiere platform. In Level III, students will produce a daily “morning events show” and a weekly “Cyclone Spin Sports”.

ADVANCED BROADCAST PROJECTS – 459906CW

Grade: 11, 12

Value: 1 unit

Prerequisites: Broadcasting II and III

Course Description: This class will focus on single-team; large format broadcast productions of community-enhancing programming. Projects will focus on enhancing the living standard of Chester City and County and its community members. Off campus production is mandatory; therefore, parent permission is required.

AFRICAN AMERICAN LITERATURE – 309911CW

Grade: 10, 11 12

Value: 1 unit

Course Description: Designed to enhance one’s understanding of African American culture, history and literature. Focus will be on improving writing skills, developing analytical reading skills, and creating a wealth of knowledge about this culture. A study of grammar usage and mechanics along with vocabulary development and practice in writing compositions will be coupled with the study of a variety of literary selections from African American slave narratives to modern day literature to assist the student’s preparation for HSAP, ACT/SAT and for general success.

JOURNALISM – 305001CW

Grade: 10, 11, 12

Value: 1 Unit

Course Description: This course teaches the fundamentals of journalism, including news reporting, copy editing, proofreading, and journalism ethics. Class projects may include designing the school newspaper and/or other communications.

ADVANCED COMPOSITION - 303001CW

Grade: 11, 12 **Value:** 1 Unit

Course Description: This course will focus on the fundamentals of writing with an emphasis on grammar, punctuation, organization, and development. Students will critique and compose essays in a variety of styles.

Other Elective Courses

PUBLIC SPEAKING – 304001CW

Grade: 9, 10, 11, 12 **Value:** 1 Unit

Course Description: Various speaking exercises will allow students to gain poise in public speaking situations. Students will prepare and deliver speeches in impromptu, extemporaneous, manuscript,

FAMILY AND CONSUMER SCIENCES I – 580800CW

Grade: 9,10,11,12

Value: 1 Unit

Course Description: This introductory course in Family and Consumer Sciences emphasizes the physical, social, economic, and cultural needs of individuals and families. Organized instruction and lab experiences emphasize attitudes and skills relevant to personal, home, and family life responsibilities.

PARENTING EDUCATION I – 581600CW

Grade: 10, 11, 12

Value: 1 Unit

Course Description: This course is designed to provide the student with information and experiences that will give him/her sound, positive insight into parenting roles and responsibilities. Learning experiences will focus upon the parent and the skills essential for both males and females to function effectively, and with personal satisfaction, to satisfy specific needs of children.

CHILD DEVELOPMENT I – 580000CW

Grade: 11, 12

Value: 1 Unit

Course Description: This course approaches the study of human growth and development from conception through age five. Within the course, the care and guidance of young children relative to the physical, social, emotional and mental development tasks are stressed. Efforts are made to incorporate guided observation and participation with young children and their parents in order to promote personal confidence in responding to young children. Competencies gained will prepare the student to assume a parental role and/or career involving the care and nurturing of the young.

FAMILY LIFE EDUCATION I – 582001CW/ FAMILY LIFE EDUCATION II – 582100CW

Grade: 10, 11, 12

Value: 1 Unit

Course Description: This course emphasizes the family as the basic unit in a changing society, while exploring the complexities of marriage and family life. Preparation for marriage and the management of resources to achieve individual and family goals are emphasized.

YEARBOOK PREP – 305401CW

Grade: 9, 10, 11, 12

Value: 1 Unit

Course Description: This course focuses on the mechanics of completing a yearbook from layout and design to should be proficient in reading, writing, and listening. In addition to workbook assignments, a variety of hands-on activities are required including interview sessions from which students are expected to create feature articles using collected data.

Other Elective Courses



SAT/ACT PREPARATION – VERBAL – 401100CH, MATH – 415000CH

Grade: 10, 11, 12

Prerequisite: Alg. I & Geo. (enrolled in or Completed)

Value: ½ Unit each (Must be taken same semester)

Course Description: These college-preparatory courses are geared toward helping students become better prepared for taking standardized tests such as the SAT/PSAT, ACT, and COMPASS. Nine consecutive weeks of class time.

DRIVER EDUCATION – 370100CH

Grade: 10, 11, 12

Prerequisite: Must be at least 15 years of age

Value: ½ Unit

Course Description: This course consists of classroom instruction aimed at preparing the student to acquire a South Carolina driver's permit as well as preparing him for actual driving activities. The class will emphasize safe driving techniques. After successful completion of the classroom portion of the course, students will be given information and possible opportunities for the six hours of driving requirements needed to receive a certificate. The certificate can be given to the student's insurance agent and will result in a reduction of insurance rates.

HONORS TEACHER CADET – 338100EW

Grade: 12

Prerequisite: Application mandatory; 3.0 GPA; college-prep or honors courses; teacher recommendations; review

Course Description: This honors level course is geared toward students who plan to pursue a career in education and who have superior interpersonal and leadership skills. The teacher's primary role is as a facilitator. Course content will include group work, classroom observations, and planning and teaching lessons. Completion of the course with a "C" average or better can earn the student 3 hours of college credit through Winthrop University.

TEACHING ASSISTANCE PROGRAM-308000CW

Grade: 11, 12

Prerequisite: Application mandatory; 2.7 GPA; Must excel in a particular content area and exhibit appropriate personality characteristics or one semester

Value: 1 unit or ½ unit

Course Description: This is an individually-tailored course which allows a student with exceptional strength in a targeted subject to work as a teaching assistant one period a day with a supervising teacher in math, English, foreign language, science, fine arts, or library science. The student will assist teachers and engage in beginning curriculum development and research experiences in the subject, and perform clerical and computer tasks. The teaching assistant should have sufficient background to help with content.

ART APPRECIATION-341100CW

Grade: 9,10,11,12

Value: 1 Unit

Course Description: This is an introductory course to history and appreciation of art, including the elements and principles of the visual arts.



Agricultural Science Courses

AGRICULTURAL MECHANICS AND TECHNOLOGY – 566000CW

Grade: 10, 11, 12

Value: 1 Unit

Course Description: The Agriculture Technology course provides development of general mechanical skills which are required in all areas of Agricultural Education. Typical instructional activities include hands-on experiences in woodworking; metal working; welding; small engine repair; basic farm and homestead improvements; participating in personal and community leadership development activities; planning and implementing a relevant work-based transition experience; and participating in FFA activities.

EQUIPMENT OPERATIONS AND MAINTENANCE –562100CW

Grade: 10, 11, 12

Prerequisite: Agricultural Mechanics

Value: 1 Unit

Course Description: This course is designed to teach students how to operate and maintain equipment commonly used in the agricultural industry. It includes equipment used in all four of the Agriculture, Food and Natural Resources pathways: Horticulture, Plant and Animal Systems, Environmental and Natural Resources Management and Agricultural Mechanics and Technology. Typical instructional activities include hands-on experiences with agricultural power units; participating in person and community leadership development activities; planning and implementing a relevant work-based experience; and participating in FFA activities.

AGRICULTURAL SCIENCE AND TECHNOLOGY – 562400CW

Grade: 9,10, 11, 12

Value: 1 Unit

Course Description: The Agricultural Science and Technology course is designed to teach essential concepts and understanding related to plant and animal life including biotechnology, the conservation of natural resources, and the impact of agriculture and natural resource utilization on the environment. Emphasis is placed on the role of agriculture in our society and the importance of agriculture to the welfare of the world. Basic personal and community leadership and safety, and agricultural mechanical technology are included as a part of the instructional program. Each student is expected to design and participate in a supervised agricultural experience. Typical learning activities include hands-on learning experiences including performing basic principles of plant, soil, and animal science; studying and modeling the significance of humankind's interrelationship with soil, water, and air; participating in FFA activities.

Agricultural Science Courses

LANDSCAPE TECHNOLOGY – 567000CW

Grade: 10, 11, 12

Value: 1 Unit

Course Description: Landscape Technology is designed to qualify the student completing the course for entry into landscaping fields or to continue advanced training in post high school education. A combination of subject matter and activities is designed to teach technical knowledge and skills for entry-level positions in selling, selecting and servicing. Typical instructional activities include hands-on experiences with the planning and selection of materials for the construction of landscapes; the mechanical practices associated with irrigation and water conservation; erosion control; participating in personal and community leadership development activities; planning and implementing a relevant supervised agricultural experience; and participating in FFA activities.

HORTICULTURE FOR THE WORKPLACE I -565200CD

Grade: 10, 11, 12

Value: 2 Units

Course Description: This course includes organized subject matter and practical experiences related to the culture of plants used principally for ornamental or aesthetic purposes. Instruction emphasizes knowledge and understanding of the importance of establishing, maintaining, and managing ornamental horticulture enterprises. Typical instructional activities include hands-on experiences with propagating, growing, establishing, and maintaining nursery plants and greenhouse crops; tissue culture techniques; designing landscapes; preparing designs; sales analysis and management; participating in personal and community leadership development activities; planning and implementing a relevant work-based experience; and participating in FFA activities.

HORTICULTURE FOR THE WORKPLACE II-565300CD

Grade: 10, 11, 12

Value: 2 units

Course Description: This course is the second level course designed for programs involved in the Horticulture Career Pathway. The course is a combination of subject matter and planned learning experiences on the principles involved in the relationship of the culture of plants used principally for ornamental or aesthetic purposes. Instruction emphasizes knowledge and understanding of the importance of establishing, maintaining, and managing ornamental horticulture enterprises. Typical activities include hands-on experiences with propagating, growing, establishing, and maintaining nursery plants and greenhouse crops; tissue culture techniques; designing landscapes; preparing designs; sales analysis and management; participating in personal and community leadership development activities; planning and implementing a relevant work-based experience; and participating in FFA activities.

ENVIRONMENTAL AND NATURAL RESOURCES -562600CW

Grade: 10, 11, 12

Value: 1 Unit

Course Description: The Environmental and Natural Resources Management course is a combination of subject matter and planned learning experiences on the principles involved in the conservation and/or improvement of natural resources such as air, soil, water, land, trees, fish, and wildlife for economic and recreational purposes. Instruction also emphasizes such factors as the establishment, management, and operation of forestlands for recreational purposes. Typical leaning activities include constructing a model watershed; identifying and/or measuring the levels of pollution in a selected site; hands-on experiences with site analysis; evaluation of competing interests; analysis of biological and physical aspects of the environment and environment-related issues and participating in FFA activities.

Business and Marketing Courses

KEYBOARDING – 510000CH

Grade: 9, 10, 11, 12

Value: ½ unit

Course Description: Keyboarding is a requirement for high school graduation. This course is designed to provide an opportunity to master the skill of entering alphabetic, numeric, and symbolic information on a keyboard and ten-key pad using the touch method of key-stroking. Emphasis is placed upon development of speed and accuracy, proper techniques, and correct fingering. The student will develop skills in formatting letters, reports, memos, and tables.

COMPUTER APPLICATIONS – 500800CH

Grade: 9, 10, 11, 12

Prerequisite: Keyboarding

Value: ½ unit

Course Description: Students are taught introductory competencies in the use of database, spreadsheet, word processing, and graphics applications software in analyzing and solving business-related problems.

ENTREPRENEURSHIP – 540000CW

Grade: 9, 10, 11, 12

Value: 1 unit

Course Description: This course is designed to provide a general overview of the American enterprise system with special emphasis on small business ownership. An important part of the course will be the incorporating of marketing and financial considerations.

MARKETING – 542100CW

Grade: 9,10,11,12

Value: 1 Unit

Course Description: This course, which provides the foundation for all marketing completers, introduces marketing concepts and examines the economic, business and human resource foundations of marketing. An overview of selling, promotion, distribution, risk management, pricing, purchasing, information management product/ service planning and financing is included.

MARKETING MANAGEMENT – 543100CW

Grade: 10, 11, 12

Prerequisite: Marketing

Value: 1 Unit

Course Description: This course continues the analysis of the marketing functions by examining human resource foundations, marketing and business fundamentals, distribution, promotion, and selling as applied in merchandising.

FASHION MERCHANDISING – 541000CW

Grade: 10, 11, 12

Prerequisite: Marketing

Value: 1 Unit

Course Description: This course is designed to explore the concepts and practices of the fashion business to include an overview of the fashion industry, the nature of fashion, and career development. Product technology, selling, advertising, visual merchandising, and management will be analyzed.

Business and Marketing Courses

PERSONAL FINANCE - 513100CW

Grade: 9, 10, 11, 12

Value: 1 Unit

Course Description: The course is designed to introduce the student to the basic elements of finance: budgeting, obtaining credit, maintaining checking accounts, computing payroll, recording business transactions, and applying computer operations to financial management, preparing income tax forms, selecting savings and investment programs, and purchasing insurance.

ACCOUNTING I – 500100CW

Grade: 10, 11, 12

Value: 1 unit

Course Description: This course introduces the student to the relationship between accounting and business through an understanding of the accounting cycle as applied to several different kinds of business operations. Use of the computer in simulated activities gives the student an opportunity to see advantages of technology in accounting procedures.

ACCOUNTING II – 500500CW

Grade: 11, 12

Prerequisite: Accounting I

Value: 1 unit

Course Description: The course expands the student's understanding of accounting subsystems and develops an understanding of various methods of internal control procedures. The student develops competence in using subsidiary ledgers, in preparing financial statements, and in performing end-of-period procedures. The student will demonstrate the use of accounting principles through the use of computer software and simulated activities.

BUSINESS LAW – 504401CW

Grade: 10, 11, 12

Value: 1 Unit

Course Description: This course is designed to provide the student with knowledge of the legal environment in which a consumer operates, and to provide the student with knowledge of legal principles as a consumer and an employee.

MERCHANDISING – 543000CW

Grade: 10, 11, 12

Prerequisite: Marketing

Value: 1 Unit

Course Description: This program prepares individuals to function as professional buyers of resale products and product lines for stores, chains, and other retail enterprises. The course includes instruction in product evaluation, merchandising, applicable aspects of brand and consumer research, principles of purchasing and negotiation skills.

INTEGRATED BUSINESS APPLICATIONS I 502000CW

Grade: 9, 10, 11, 12

Prerequisite: Keyboarding

Value: 1 Unit

Course Description: Students learn to use databases, spreadsheets, word processing and graphics application software in analyzing and solving business related problems. Emphasis is on speed, accuracy and production using proper keyboarding techniques. The design of this course is to prepare students for Microsoft Office User Specialist (MOUS) certification.

Business and Marketing Courses

INTEGRATED BUSINESS APPLICATIONS II 502100CW

Microsoft Office User Specialist (MOUS)

Certification Preparation Course

Grade: 10, 11, 12

Prerequisite: Integrated Business Applications I

Value: 1 Unit

Course Description: This course of study is designed to teach the student advanced computer concepts as related to processing data into useful information needed in business situations by using database, spreadsheet, word processing, and presentation software capabilities. Because the design of this course is to prepare students for Microsoft Office user Specialist (MOUS) Certification, the emphasis is on speed, accuracy, and production using proper keyboarding techniques.

DIGITAL DESKTOP PUBLISHING – 517601CW

Grade: 10, 11, 12

Prerequisite: Keyboarding and Computer Applications or IBA 1

Value: 1 unit

Course Description: This course brings together graphics and text to create professional level publications. Students create, format, illustrate, design, edit/revise, and print publications. Improved productivity of digitally produced newsletters, flyers, brochures, reports, advertising materials, and other publications is emphasized. Proofreading, document composition, and communication competencies are also included.

DIGITAL MULTIMEDIA - 503000CW

Grade: 10, 11, 12

Prerequisite: Keyboarding and Computer Applications or IBA 1

Value: 1 unit

Course Description: This course covers multimedia concepts and applications utilizing text, graphics, animation, sound, video, and various multimedia applications in the design, development, and creation of multimedia presentations and publications within an interactive environment. Students will create a digital portfolio and other independent projects.

IMAGE EDITING I – 534000CW

Grade: 10, 11, 12

Prerequisite: Integrated Business Applications I or Computer Applications

Value: 1 unit

Course Description: This course is designed to provide the student with the knowledge and skills needed to utilize digital imaging software in editing and designing images and graphics. Students also learn the use of technologies related to digital imaging such as: basic computer operations; file sharing across the networks; digital scanning; digital photography; preparing documents for output to various types of media. Successful completion of this course will prepare the student to take the industry certification test (s).

WEB PAGE DESIGN & DEVELOPMENT 503100CH

Grade: 10, 11, 12

Prerequisite: Keyboarding, Computer Applications or Integrated Business Applications

Value: 1 unit

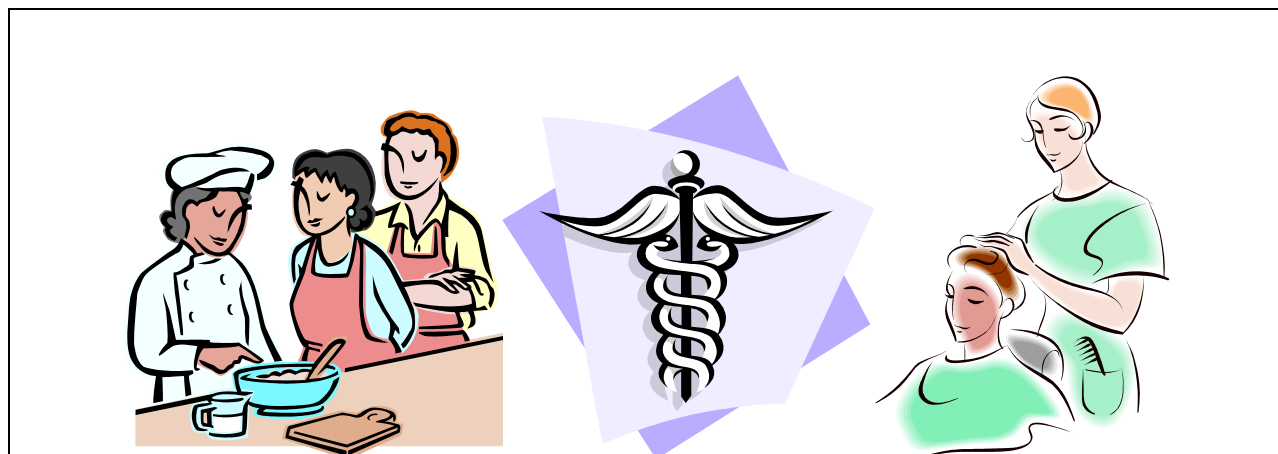
Course Description: This course is designed to provide the student with the knowledge and skills needed to design Web pages. Students will develop skills in designing, implementing, and maintaining a Website using authoring tools.

ADVERTISING-547000CW

Grade: 10, 11, 12

Value: 1 Unit

Course Description: This course is designed to introduce the concepts of advertising, planning strategies, communication skills, and professional development. Course content includes budget development, media selection, design, and the preparation of ads for various media.



Health and Human Services Courses

INTRODUCTION TO HEALTH SCIENCE – 555400CW

Grade: 10

Value: 1 unit

Course Description: This course is designed to acquaint and encourage 10th grade students to pursue health care careers. The course focuses on health careers exploration, healthcare systems roles, leadership, employability, and communication skills. Students will develop a concept of health maintenance practices, safety, teamwork, and legal and ethical responsibilities.

HEALTH SCIENCE I - 555000CD

Grade: 11

Value: 2 units

Course Description: This course is designed to develop healthcare specific knowledge and skills, both academic and technical, necessary for transition to clinical or work-based experiences in healthcare. The foundational standards incorporate anatomy and physiology, medical terminology, communication, healthcare systems and teams, health science career research, legal and ethical practice, safety, health and wellness, cardiopulmonary resuscitation, and first aid.

HEALTH SCIENCE II - 555100CD

Grade: 12

Prerequisite: Health Science Technology I

Value: 2 units

Course Description: Health Science Technology 2 focuses on therapeutic, diagnostic, health informatics, support services, and biotechnology research and development pathways of a health science cluster career. The course is designed to provide for the development of multi-occupational knowledge and skills foundational to a wide variety of healthcare professionals. The foundational standards incorporate anatomy and physiology, diseases, therapies and care rehabilitation, prevention, systems theory, legal standards, ethical and safety practices, advanced technical skills, and information technology applications. Students will have hands-on experiences for expanded knowledge and skills development. Qualified students may have opportunity to gain work experience in various health facilities available in the community. Students selected to participate in clinical experiences must maintain a “C” average or higher in the class.

Health and Human Services Courses

EMERGENCY MEDICAL SERVICES I (EMS) - 553000CW

Grade: 9-12

Value: 1 Unit

Course Description: EMS 1 is designed to teach students how to respond to emergencies and how to overcome reluctance to act in emergency situations. The curriculum includes instruction in areas of legal—ethical issues, safety and infection control, healthy lifestyles, and certification in first aid and cardiopulmonary resuscitation (CPR). Optional competencies/skills may include vital signs, medical terminology, automated external defibrillation (AED), disaster preparedness, and injury control modules.

SPORTS MEDICINE I – 555500CW/SPORTS MEDICINE II- 555600CW

Grade: 10, 11, 12

Value: 1 or 2 units

Course Description: This course emphasizes the prevention of athletic injuries, including the components of exercise science, anatomy, principles of safety, first aid, cardiopulmonary resuscitation (CPR), and vital signs. Subject matter will also include discussion of legal issues, members of the sports medicine team, nutrition, protective sports equipment, environmental safety issues, taping and wrapping, mechanisms of injury, and application of other sports medicine concepts. Students interested in healthcare careers in athletic training, physical therapy, medicine, exercise physiology, nursing, biomechanics, nutrition, psychology, and radiology will benefit from this course.

COSMETOLOGY I – 615000CT

Grade: 10, 11

Value: 3 units

Course Description: The Cosmetology program is designed to prepare students to qualify for licensing examinations. Cosmetology students receive training in the area of science and the care and beautification of hair, skin and nails. The course of study includes scalp treatments, hair shaping, hair styling, setting, waving, coloring, and shampoos and rinses. Care of skin and nails includes manicure and pedicure, massage, facials, make-up application, and hair removal. Instruction in chemistry, bacteriology, and anatomy and physiology of the face, head arms and hands is incorporated by means of both theory and practical application on both mannequins and other students. **Students must purchase kits. LHS and GFHS students must have their own transportation.**

COSMETOLOGY II – 615100CT

Grades: 11, 12

Prerequisite: Cosmetology I

Value: 3 units

Course Description: Second-year cosmetology students apply theory from their first year to live models and spend most of their time practicing in a mock salon. Second-year students also study salon planning, management, and desairology (hair dressing for the deceased). They are required to complete a total of 1500 hours of instruction in the two years.

CULINARY ARTS I – 572000CW/CD

Grades: 10, 11

Prerequisite: None

Value: 1 or 2 Units

Course Description: Culinary Arts I introduces students to the importance of sanitation and safety in food services. Students learn the names, uses and care of commercial kitchen equipment and utensils. Students learn basic recipe skills, equivalent measures, table settings, and cake decoration techniques. Both quick and quantity food production skills are developed. This course integrates theory with actual kitchen experiences.

Health and Human Services Courses

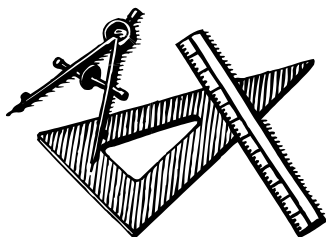
CULINARY ARTS II – 572100CT

Grades: 11, 12

Prerequisite: Culinary Arts I

Value: 3 units

Course Description: In Culinary Arts II, students gain managerial skills such as costing, planning, and directing. Food production, including catering, is emphasized. This course integrates theory with actual kitchen experiences. Upon completion, potential careers include restaurant manager, caterer, chef, baker, cook's helper, or dietary aid. Those students seeking post-secondary education can pursue culinary arts, pastry arts, hospitality management, dietetics, or travel and tourism.



Engineering, Manufacturing, and Industrial Technology Courses

AUTOMOTIVE TECHNOLOGY I – 603000CW/CD

Grade: 9, 10, 11

Value: 1 or 2 Units

Course Description: This course is designed to introduce the student to the proper and safe use of tools in the auto shop. The student is also taught basic operations of different systems on the automobile (fuel, exhaust, lubrication, and suspension).

AUTOMOTIVE TECHNOLOGY II – 603100CT

Grades: 10, 11, 12

Prerequisite: Automotive Technology I

Value: 3 units

Course Description: This course is designed to introduce the student to the more complex components of the automobile such as engine repair, electrical systems and drive train operation. The student will also perform numerous hands-on activities in each of these phases.

AUTOMOTIVE TECHNOLOGY III– 603200CT

Grades: 11, 12

Prerequisite: Automotive Technology II

Value: 3 units

Course Description: Level III is designed for the student who has a high interest in the more complex components of the automobile such as engine repair, electrical systems and drive train operation. The student should be able to work independently on projects that will extend and enhance his knowledge and skills.

Engineering, Manufacturing, and Industrial Technology Courses

CARPENTRY I -609100CW/CD

Grades: 9, 10, 11

Value: 1 or 2 units

Course Description: The building construction program is designed to prepare students to perform entry-level carpentry tasks under the supervision of an experienced carpenter. Building Construction I students receive instruction in framing, construction materials, blue print reading, and safety. Also included is instruction in site preparation using power and hand tools, and applied mathematics.

CARPENTRY II -609200CT

Grades: 10, 11, 12

Prerequisite: Carpentry I

Value: 3 units

Course Description: This course further develops the skills and competencies taught in Building Construction I and prepares the student for more advanced skills including cabinet making, stair construction, and advanced joinery.

CARPENTRY III -609300CT

Grades: 11, 12

Prerequisite: Carpentry II

Value: 3 units

Course Description: Level III is designed for the student who has performed at a high level of proficiency on the skills and competencies taught in Building Construction II. The student should be able to work independently on projects that will extend and enhance his skills.

MECHATRONICS INTEGRATED TECHNOLOGY (MIT) I – 621000CW/CD/CT

Grades: 9, 10, 11, 12

Value: 1 unit, 2 units, 3 units

Course Description: This program prepares students for high tech careers in advanced manufacturing and high level Mechatronics maintenance positions. Mechatronics refers to a flexible multi-technological approach in the integration of mechanical engineering, computer engineering, electronics, and information sciences. Mechatronics is essential in the design of intelligent products. These careers are high wage, challenging careers with national need for technicians accelerating rapidly.

MECHATRONICS INTEGRATED TECHNOLOGY (MIT) II – 621100CW

Grades: 10, 11, 12

Value: 1 unit

Prerequisite: Mechatronics I

Course Description: This level II course is designed for the student who has performed at a high level of proficiency in Mechatronics I. The course will continue to address the skills needed in industrial maintenance.

MECHATRONICS INTEGRATED TECHNOLOGY (MIT) III – 621200CW

Grades: 11, 12

Value: 1 Unit

Prerequisite: Mechatronics II

Course Description: This level III course is designed for the student who has performed at a high level of proficiency in Mechatronics II. This course will continue to address the skills needed in industrial maintenance.

Engineering, Manufacturing, and Industrial Technology Courses

INTRODUCTION TO ENGINEERING DESIGN- 605100CW

Grade: 9, 10, 11, 12

Value: 1 Unit

Description: Using computer modeling software, students in this course will learn the process of product design. They will solve design problems as they develop, create and analyze product models.

ARCHITECTURAL DESIGN I – 617000CD

Grades: 10, 11, 12

Prerequisite: Mechanical Design I

Value: 2 units

Course Description: The computer aided course is an integral part of the architectural and mechanical drafting programs and is designed to prepare students to perform entry-level tasks under supervision. The first year is devoted to learning the basis and fundamentals of mechanical drafting. Students will obtain traditional “board drafting” skills to enhance their learning curve on CADD. At the end of the course students will be proficient at transforming a crude sketch into a professional quality document/blueprint implementing their computer editing skills from AutoCadd. Drafting is strongly recommended for any students interested in Engineering or Architecture.

ARCHITECTURAL DESIGN II – 617100CD

Grades: 11, 12

Prerequisite: AD I

Value: 2 units

Course Description: This course is an integral part of Architectural and Mechanical drafting programs and is designed to prepare students to perform entry level tasks under supervision; however, it is in much deeper detail. Typical drawings will include isometrics, orthographies, detailed assembly, architectural floor plans, elevations, foundation plans, schedules, wall sections and small scale models.

MECHANICAL DESIGN I– 617200CD

Grades: 11, 12

Prerequisite: Geometry strongly recommended

Value: 2 units

Course Description: Level III is designed for students with extensive interest in CADD and who have performed at high levels of proficiency. The student should be able to work independently on projects that will extend and enhance his knowledge and skills.

PRINCIPLES OF ENGINEERING DESIGN – 605000CW

Grades: 10, 11, 12

Value: 1 Unit

Description: Students explore technology systems and engineering processes to find out how math, science and technology help people.

ELECTRICITY I – 628700CW/CD

Grades: 9, 10, 11

Value: 1 or 2 units

Course Description: This program is designed to prepare students for entry-level residential employment as an electrician or electrician helper. Students receive instruction in communication, leadership, human relations, employability, safety and effective work practices. Students are introduced to the installation, operation, maintenance, and repair of residential electricity systems. Laboratory activities provide instruction in all phases of residential electrical wiring in accordance with the National Electrical Codes.

Engineering, Manufacturing, and Industrial Technology Courses

ELECTRICITY II -628800CT

Grades: 10, 11, 12

Prerequisite: Electricity I

Value: 3 units

Course Description: This course is designed to prepare students for entry level industrial employment. The course provides additional training in electrical theory and circuits. Students will receive training on motor controls, three-phase systems, sign-phase systems, and direct current systems.

ELECTRICITY III-628900CT

Grades: 11, 12

Prerequisite: Electricity II

Value: 3 units

Course Description: Level III is designed for students with an extensive interest in electricity and who have performed at high levels of proficiency. The student should be able to work independently on projects that will extend and enhance his knowledge and skills.

GRAPHIC COMMUNICATIONS I – 620000CW/CD

Grades: 10, 11, 12

Value: 1 or 2 units

Course Description: This program is designed to prepare the student to perform graphic communications tasks under the supervision of an experienced printer. Students receive instruction in layout and design, electronic imaging, reproduction photography, image assembly and platemaking, offset press operation, finishing and bindery, and employability skills.

GRAPHIC COMMUNICATIONS II – 620100CT

Grade: 11, 12

Prerequisite: Graphic Communications I

Value: 3 units

Course Description: In this course the student receives more hands-on experience along with classroom instruction in desktop publishing, continuous-tone photography, offset press operation, layout and design, reproduction photography, platemaking, and press operation.

GRAPHIC COMMUNICATIONS III – 620200CT

Grade: 11, 12

Prerequisite: Graphic Communications II

Value: 3 units

Course Description: In level III the student receives a greater amount of hands-on experience along with classroom instruction on topics in level II. It is designed for the student with a high level of interest who has performed at a high level of proficiency. The student should be able to work independently on projects that will expand and enhance his knowledge and skills.

MACHINE TECHNOLOGY I – 623000CW/CD

Grades: 9, 10, 11

Value: 1 or 2 units

Course Description: Machine Tool Technology is designed to prepare students to perform entry-level tasks under the supervision of an experienced machinist. Students receive training on a variety of metal shaping machines used in industry. Included in the course of study is instruction related to machining, precision measurement, industrial shop safety, shop drawings, and mathematics.

Engineering, Manufacturing, and Industrial Technology Courses

MACHINE TECHNOLOGY II – 623100CT

Grades: 10, 11, 12

Prerequisite: Machine Technology I

Value: 3 units

Course Description: The student will be taught additional skills in the basic knowledge of the band saw and cut-off machines. The basics of computer numerical control lathe and milling machines are taught, as well as surface grinding, precision grinding, and the operation of a milling machine.

MACHINE TECHNOLOGY III– 623200CT

Grades: 11, 12

Prerequisite: Machine Technology II

Value: 3 units

Course Description: Level III is designed for the student who has a high degree of interest in Machine Technology and who has performed at a high level of proficiency in Level II. The student should be able to work independently on projects that will extend and enhance his knowledge and skills.

MASONRY I – 625000CW/CD (Currently not available)

Grades: 9, 10, 11, 12

Value: 1 or 2 Units

Course Description: The Masonry program is designed to prepare students to perform entry-level masonry tasks under the supervision of an experienced mason. Masonry students receive instruction in construction and repairing walls, partitions, arches, fireplaces, floors, and walks. Included in the course of study is instruction in spacing, layouts, and alignment of bricks and blocks.

MASONRY II – 625100CT (Currently not available)

Grades: 10, 11, 12

Prerequisite: Masonry I

Value: 3 Units

Course Description: The Masonry program is designed to prepare students to perform entry-level masonry tasks under the supervision of an experienced mason. Masonry students receive instruction in construction and repairing walls, partitions, arches, fireplaces, floors, and walks. Included in the course of study is instruction in spacing, layouts, and alignment of bricks and blocks.

MASONRY III – 625200CT (Currently not available)

Grades: 11, 12

Prerequisite: Masonry II

Value: 3 Units

Course Description: The Masonry program is designed to prepare students to perform entry-level masonry tasks under the supervision of an experienced mason. Masonry students receive instruction in construction and repairing walls, partitions, arches, fireplaces, floors, and walks. Included in the course of study is instruction in spacing, layouts, and alignment of bricks and blocks.

WELDING TECHNOLOGY I – 634001CW/CD

Grades: 9, 10, 11

Value: 1 or 2 units

Course Description: The Welding I program is designed to prepare entry-level welding tasks under the supervision of an experienced welder. The Welding I student receives training necessary to produce high quality welds and cuts using Oxyacetylene Welding (OAW) and shielded Metal Arc Welding (SMAW). Instruction related to basic blueprint reading, properties of metal, and safety are included.

Engineering, Manufacturing, and Industrial Technology Courses

WELDING TECHNOLOGY II -634100CT

Grades: 10, 11, 12

Prerequisite: Welding I

Value: 3 units

Course Description: The Welding II program is designed to prepare students to perform apprentice level welding tasks under the supervision of an experienced welder. Welding II students receive training necessary to produce high quality welds and cuts using plasma arc cutting, and Shielded Metal Arc Welding–Advanced, Gas Tungsten Arc Welding and Gas Metallic Arc Welding (GMAW) processes. Included in the course of instruction are instructions related to advanced blueprint reading, properties of metals, and safety.

WELDING TECHNOLOGY III -634200CT

Grades: 11, 12

Prerequisite: Welding II

Value: 3 units

Course Description: The Welding III program is designed to prepare students to perform apprentice level welding tasks under the supervision of an experienced welder. Included in the course are instructions related to advanced blueprint reading, properties of metals, and safety. It is designed for the student who has a high level of interest in welding and who has performed at a high level of proficiency. The student should be able to work independently on projects that will extend and enhance his knowledge and skills.

Dual Credit and College Credit Courses

The School District of Chester County, in partnership with the University of South Carolina and York Technical College, offers courses for dual credit (credit at both the high school and college levels) and college credit courses. These courses are offered utilizing the distance learning labs and are available to students in all district high schools. Examples of courses that have been and may be offered this coming year include:

| | |
|---------------------------------------|-----------------------------|
| <i>Psychology</i> | <i>Welding Technology</i> |
| <i>Public Speaking</i> | <i>Health Science</i> |
| <i>American Government</i> | <i>Machine Technology</i> |
| <i>English</i> | <i>Accounting</i> |
| <i>University Studies</i> | <i>Architectural Design</i> |
| <i>Philosophy</i> | <i>Mechanical Design</i> |
| <i>United States/European History</i> | |
| <i>Criminal Justice</i> | |
| <i>Spanish</i> | |

Courses offered for the coming year are **to be announced**. See your school counselor for more information.

Equal Opportunity:

It is the policy of Chester County School District not to discriminate on the basis of sex, race, national origin, age or handicap in its educational program activities, and employment practices as required by Title IX of the 1972 Education Amendments.

Chester County Career Center
1324 J A Cochran By-Pass
Chester, South Carolina 29706
Telephone: (803) 377-1991
Fax (803) 581-0912

Chester High School
1330 J A Cochran By-Pass
Chester, South Carolina 29706
Telephone: (803) 377-3161
Fax: (803) 581-2363

Great Falls High School
411 Sunset Avenue
Great Falls, South Carolina 29055
Telephone: (803) 482-2210
Fax: (803) 482-4896

Lewisville High School
3971 Lewisville High School Road
Richburg, South Carolina 29729
Telephone: (803) 789-5131
Fax: (803) 789-3188

