

A black and white photograph of an Eureka SuperBroom! vacuum cleaner. The vacuum is upright, with a clear dust container in the middle. The brand name 'EUREKA' is printed vertically on the dust container. The top part of the vacuum has 'THE BOSS' and 'SELF-CLEANING SYSTEM' printed on it. In the background, two other Eureka vacuum models are visible: 'EUREKA POWERLINE SUPERBROOM!' and 'EUREKA THE BOSS SUPERBROOM!'.

# EUREKA

## **SUPERBROOM!**<sup>®</sup>

### Vacuum Cleaner

Household Type

## Owner's Guide 200 Series

---

### Index

Important Safeguards .....	2
General Information .....	4
Assembly .....	5
Use .....	6
Empty Dust Container .....	7
Clean Filters .....	8
Order Form .....	9
Warranty .....	10-11

# IMPORTANT SAFEGUARDS

When using an electrical appliance, basic precautions should always be followed, including the following:

**READ ALL INSTRUCTIONS BEFORE USING THIS VACUUM CLEANER.**

## WARNING

To reduce the risk of fire, electric shock, or injury:

- Do not use outdoors or on wet surfaces.
- **Do not leave vacuum cleaner when plugged in.** Turn off the switch and unplug the electrical cord when not in use and before servicing.
- Do not allow to be used as a toy. Close attention is necessary when used by or near children.
- Use only as described in this manual. Use only manufacturer's recommended attachments.
- Do not use with damaged cord or plug. If vacuum cleaner is not working as it should, has been dropped, damaged, left outdoors, or dropped into water, return it to a service center before using.
- Do not pull or carry by cord, use cord as a handle, close door on cord, or pull cord around sharp edges or corners. Do not run vacuum cleaner over cord. Keep cord away from heated surfaces.
- Do not use extension cords or outlets with inadequate current carrying capacity.
- Turn off all controls before unplugging.
- Do not unplug by pulling on cord. To unplug, grasp the plug, not the cord.
- Do not handle plug or vacuum cleaner with wet hands.
- Do not use without dust container or filter(s) in place.
- Do not put any object into openings. Do not use with any opening blocked; keep free of dust, lint, hair, and anything that may reduce airflow.
- This vacuum cleaner creates suction. Keep hair, loose clothing, fingers, and all parts of body away from openings and moving parts.
- Do not pick up anything that is burning or smoking, such as cigarettes, matches or hot ashes.
- Use extra care when cleaning on stairs.
- Do not use to pick up flammable or combustible liquids such as gasoline, or use in areas where they may be present.
- Store your cleaner indoors in a cool, dry area.
- Keep your work area well lighted.

## SAVE THESE INSTRUCTIONS

# CONSEILS DE SÉCURITÉ

Lors de l'utilisation d'un appareil électrique, quelques précautions élémentaires doivent être observées, incluant les suivantes:

**LISEZ TOUTES LES INSTRUCTIONS AVANT D'UTILISER VOTRE ASPIRATEUR.**

## AVERTISSEMENT

Pour réduire le risque de feu, de choc électrique, ou de blessure:

- Ne pas utiliser à l'extérieur ou sur des surfaces mouillées.
- **Fermez le commutateur et débranchez l'appareil lorsque vous ne l'utilisez pas ou avant le nettoyage ou l'entretien.**
- Ne permettez pas qu'il soit utilisé comme jouet. Une attention particulière est nécessaire lorsque utilisé par ou près d'un enfant.
- Suivez les recommandations d'utilisation de ce manuel. Utilisez uniquement les accessoires recommandés par le fabricant.
- Ne pas utiliser si le cordon ou la fiche sont endommagés. Si l'aspirateur ne fonctionne pas comme il le devrait, s'il a été échappé, s'il est endommagé, s'il a été laissé à l'extérieur ou échappé dans l'eau, retournez-le à un centre de service avant d'utiliser.
- Ne pas tirer ou le transporter par le cordon, ne pas utiliser le cordon en guise de poignée, ne pas fermer une porte sur le cordon ou tirer le cordon sur des coins ou bordures pointus. Ne pas circuler sur le cordon avec l'aspirateur. Tenir le cordon à distance des surfaces chauffantes.
- Ne pas utiliser des rallonges ou des prises qui n'ont pas de capacité suffisante pour transporter le courant.
- Fermer tous les contrôles avant de débrancher.
- Ne pas débrancher en tirant sur le cordon. Pour débrancher, tenez la fiche et non le cordon.
- Ne pas manipuler la fiche ou l'aspirateur avec les mains mouillées.
- N'utilisez pas sans que le récipient de poussière ou filtre(s) soit en place.
- Ne pas rien insérer dans les ouvertures. Ne pas utiliser si des ouvertures sont bloquées; assurez-vous qu'elles soient dégagées de poussière, mousse, cheveux ou toute autre chose qui pourrait réduire le passage de l'air.
- Cet aspirateur crée de la succion. Tenir les parties mobiles et les ouvertures loin des cheveux, du linge, des doigts et de toute partie du corps.
- Ne pas ramasser des objets qui brûlent ou fument comme les cigarettes, alumettes ou cendres chaudes.
- Portez une attention particulière lorsque vous nettoyez les escaliers.
- Ne pas utiliser pour ramasser des liquides inflammables ou combustibles comme de l'essence ou utiliser dans les endroits où ces liquides pourraient être présents.
- Entrez votre aspirateur à l'intérieur dans un endroit propre et sec.
- Maintenez un bon éclairage à l'endroit où vous travaillez.

## CONSERVEZ CES INSTRUCTIONS

To reduce the risk of electric shock, this appliance has a polarized plug (one blade wider than the other). This plug will fit in a polarized outlet only one way. If the plug does not fit fully in the outlet, reverse the plug. If it still does not fit, contact a qualified electrician to install the proper outlet. Do not change the plug in any way.

**Afin de réduire le risque de choc électrique**, cet appareil est muni d'une fiche polarisée (une des lames est plus large). Cette fiche ne peut être insérée dans une prise polarisée que d'une seule façon. Si la fiche ne peut être insérée dans la prise, retourner la fiche. Si la fiche ne peut toujours pas être insérée dans la prise, faire installer une prise adéquate par un électricien qualifié. Ne pas modifier la fiche.

## GENERAL INFORMATION

The cleaner is designed to pick up dirt and dust particles. Avoid picking up hard or sharp objects with the cleaner to prevent clogs, filter tears and possible motor damage.

## Service Information

The instructions in this booklet serve as a guide to routine maintenance. For additional service information telephone our toll free number for the nearest Eureka Authorized Warranty Station. **You should know the model, type and serial numbers when you call:**

**USA: 1-800-282-2886**  
**Mexico: 5670-6169**  
**Canada: 1-800-282-2886**

If you prefer, you can write to The Eureka Company, Service Division, 807 North Main Street, Bloomington, Illinois 61701, USA. In Canada write to The Eureka Company, 866 Langs Drive, Cambridge, Ontario N3H 2N7. Refer to The Eureka Warranty for complete service information.



**DO NOT OIL the motor at any time. The bearings are permanently lubricated and sealed.**

## Rating Plate

The model, type, and serial numbers are indicated on the rating plate located on the back side of the cleaner. For prompt and complete service information, always refer to these numbers when inquiring about service.

MODEL	TYPE	SERIAL NO.
VOLTS	AMPS.	HERTZ
SERVICE INFORMATION: 1-800-282-2886		
<b>THE EUREKA COMPANY</b>		
BLOOMINGTON, ILLINOIS 61701		

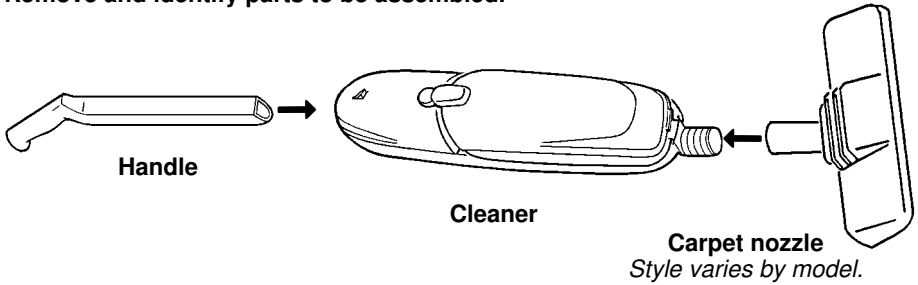
**Model & Type** \_\_\_\_\_

**Serial No.** \_\_\_\_\_

# HOW TO ASSEMBLE

**NOTE:** Assemble completely before using.

Remove and identify parts to be assembled.

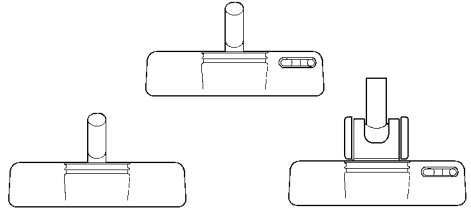


## Connect Handle

1. Hold handle tube with flat side up, handgrip curved toward the back.
2. Push handle into top of housing until the button snaps into place.

## Attach Carpet Nozzle

3. Place carpet nozzle into lower end of cleaner
4. Give a slight twist to secure.
5. Align arrows.



## Cord Retainer

6. Secure electrical cord into cord retainer on handle. Cord stays in retainer unless handle is taken off.

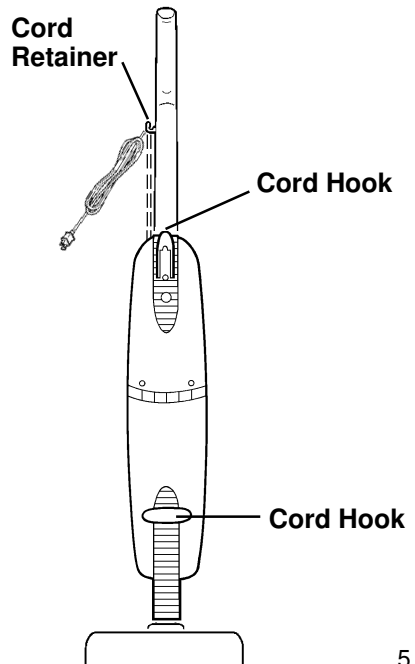
## Wrap Cord

7. Wrap cord loosely around upper and lower cord hooks.
8. Secure plug to cord to prevent unwrapping.

## Store Cleaner

9. Cleaner may hang by handle or store on a shelf.

*If needed, remove the handle to conserve storage space. Remove cord from cord retainer to remove handle.*



## HOW TO USE

Use the vacuum cleaner to sweep hard floor surfaces or vacuum surface litter from carpets.

### Power Switch

The power switch depends on the model purchased. The power switch is one of the following types:

### Push Button Switch

Push down on top of switch to turn ON; push bottom of switch to turn OFF.

### Variable Speed with Control Switch

The control switch knob turns the motor on or off and regulates the motor speed to control the amount of suction.

**To turn the motor ON**, turn control knob right.

**To increase power** for deep cleaning, turn all the way right.

**To decrease power** for light cleaning, turn control knob left.

**To turn motor OFF**, turn knob all the way left.

### Carpet Nozzle

The type of carpet nozzle depends on the model purchased. The style may have an adjustment on the front of the nozzle for carpet or bare floor cleaning, explained below. Any of the carpet nozzles use the edge cleaning feature.

**NOTE: Adjust the optional Carpet or Bare Floor Switch from the front of the nozzle.**

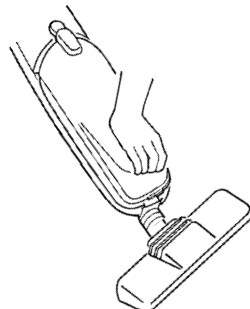
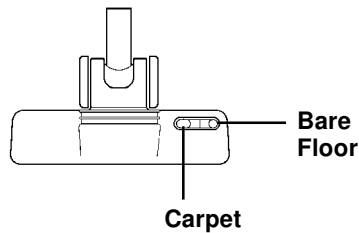
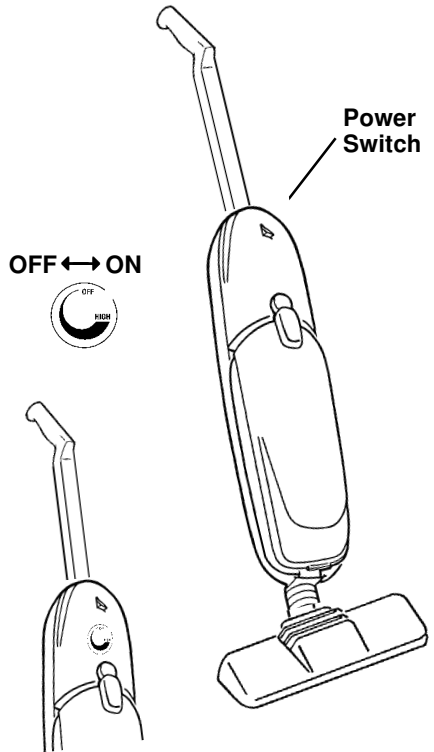
**Carpet Cleaning:** Push left side down to lock bristles inside for carpet cleaning.

**Bare Floor Cleaning:** Push right side down so bristles extend and float for cleaning bare floors.

**Edge Kleener:** Push either side of carpet nozzle along an edge to clean next to baseboards, corners, or furniture legs.

### Stair Cleaning Handle

Use the convenience handle for easy stair cleaning or better control in some areas.

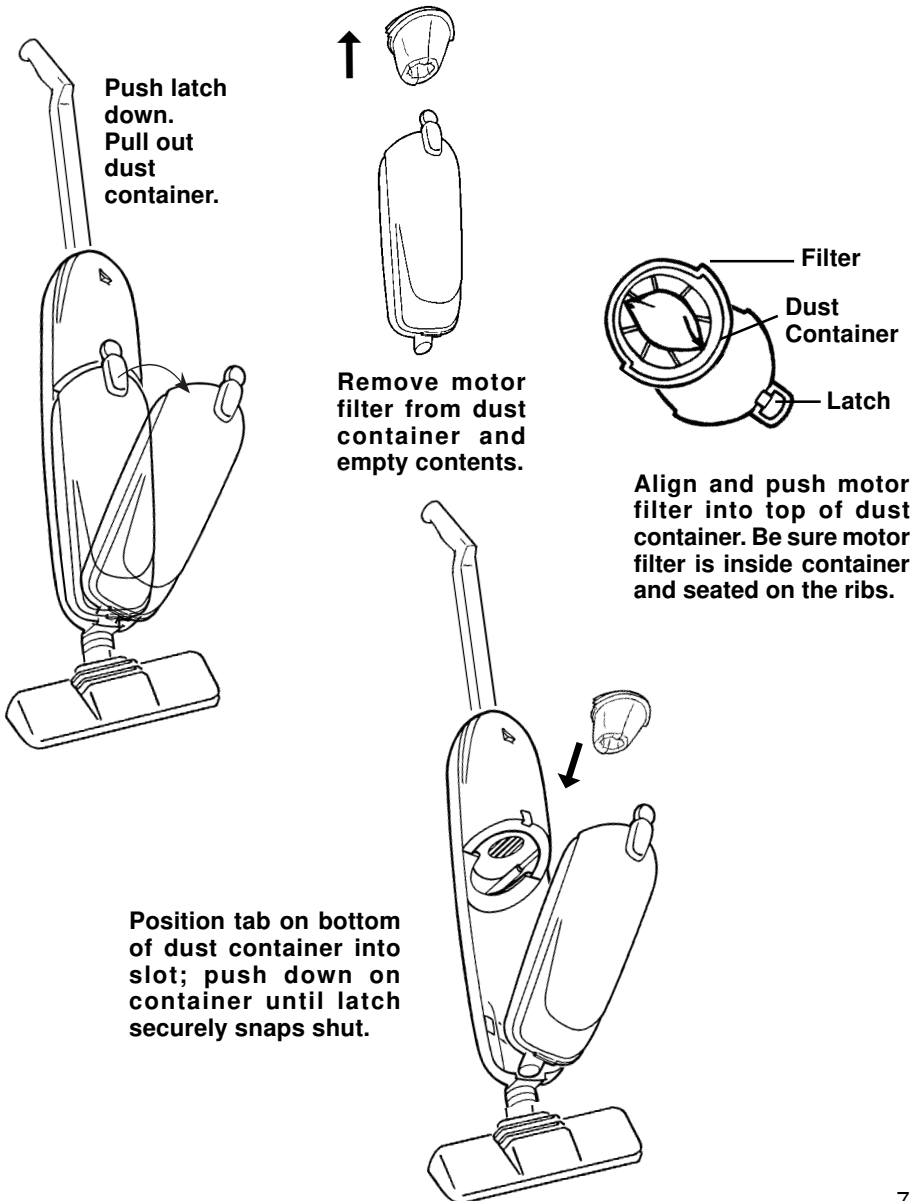


## HOW TO MAINTAIN

Routine maintenance helps avoid unnecessary service calls. Be sure to empty dust container and clean motor filter after each use to keep vacuum cleaner operating efficiently. The filter must be securely attached before using. Failure to replace filter will allow dust to enter motor section which will damage the vacuum cleaner.

### Empty Dust Container

**NOTE:** Unplug electrical cord and turn off power switch before servicing. Never operate vacuum cleaner without dust container.



## Clean Filters

Check and clean filters as needed. Remove filters to shake them vigorously and brush off dust and lint. Both filters are washable, see instructions below.

**NOTE: Unplug electrical cord and turn off power switch before servicing. Never operate vacuum cleaner without filters.**

## Motor Filter

Clean motor filter after each use. Replace filter if damaged.

**To remove motor filter from frame, pull back on rubber gasket at top of the filter and remove from frame.**

**To replace motor filter onto frame, pull new filter over frame and secure lip on frame into gasket.**

**Pull motor filter from frame**



## Final Filter

Clean final filter as needed.



**Final Filter**

## Washable Filters

If filters need further cleaning, launder them in warm water using a mild detergent. Air dry thoroughly before replacing filters into cleaner.

## Replacement Filters

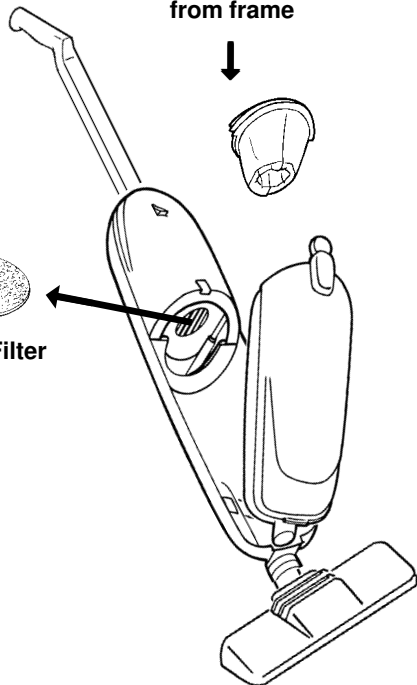
If filters are damaged or extremely soiled, replace them.

**Use replacement motor filter, part 54865 and final filter, number 38596. Both are available from a local dealer or The Eureka Company.**

## Cleaner Care

**NOTE: Turn off power switch and unplug electrical cord before cleaning unit.**

To keep vacuum cleaner looking new, it can be wiped with a damp cloth and mild soap solution, then thoroughly dried. Never use any type of chemical as they can damage the cleaner. When not in use, store cleaner in a clean, dry place.







**EUREKA**  
**VACUUM CLEANERS**

The Eureka Company  
 P.O. Box 2799  
 Bloomington, IL 61702-2799

**ORDER FORM**  
 (Not applicable in Canada)

S O L D T O

Name \_\_\_\_\_

Address (street address needed for UPS) \_\_\_\_\_

City \_\_\_\_\_ State \_\_\_\_\_ Zip \_\_\_\_\_

Telephone (Day) \_\_\_\_\_ (Eve) \_\_\_\_\_ (Fax) \_\_\_\_\_

S H I P T O

Name \_\_\_\_\_

Address (street address needed for UPS) \_\_\_\_\_

City \_\_\_\_\_ State \_\_\_\_\_ Zip \_\_\_\_\_

Telephone (Day) \_\_\_\_\_ (Eve) \_\_\_\_\_ (Fax) \_\_\_\_\_

To Order



**By Phone**  
 1-800-438-7352\*  
 HOURS:

Call between 8 a.m. and 4:45 p.m., central standard time Monday through Friday.

**By FAX**  
 1-309-823-5789

To Answer Problems or Questions in U.S.A. or Canada call:  
**1-800-282-2886\***

7 a.m. to 8 p.m., central standard time Monday through Saturday.

\*En Mexico llame al  
**5670-6169**

**By Mail**



Simply fill out this Order Form. Please be sure to include day and evening phone numbers.

www.eureka.com

Model Number: \_\_\_\_\_

Type: \_\_\_\_\_

Serial Number: \_\_\_\_\_

**Genuine Eureka Parts**



Motor Filter only

54865

3.79



Final Filter

38596

1.49

Filter Support only

15212-119N

2.69

**Part No. Qty. Price (USD) Total**

**Total** (prices subject to change without notice)

**Tax** (add state tax & local taxes as required by law)

**Postage & Handling Charge**(within U.S.A.) **\$3.75**

**TOTAL**

**TOTAL ENCLOSED**

**Method of payment (no C.O.D. orders)**

Check or money order (payable to The Eureka Company). Do not send currency.

Charge to my  Visa (13/15 digits)  MasterCard (13 digits)  Amer. Express (15 digits)

\_\_\_\_\_|\_\_\_\_\_|\_\_\_\_\_|\_\_\_\_\_|\_\_\_\_\_|\_\_\_\_\_|\_\_\_\_\_|\_\_\_\_\_|\_\_\_\_\_|\_\_\_\_\_|\_\_\_\_\_|\_\_\_\_\_|\_\_\_\_\_|\_\_\_\_\_|\_\_\_\_\_|\_\_\_\_\_|

Acct. number

Expiration Date

Signature (full name as shown on acct.) \_\_\_\_\_

58603

# THE EUREKA LIMITED WARRANTY

## *What This Warranty Covers*

Your Eureka cleaner is warranted to be free from all defects in material and workmanship in normal household use for a period of one year. The warranty is granted only to the original purchaser and members of his or her immediate household. The warranty is subject to the following provisions.

## *What This Warranty Does Not Cover*

- Parts of the cleaner that require replacement under normal use, such as disposable dust bags, filters, drive belts, light bulbs, and brush roll bristles
- Damages or malfunctions caused by negligence, abuse, or use not in accordance with the Owner's Guide.
- Defects or damages caused by unauthorized service or the use of other than Genuine Eureka parts.

## *What The Eureka Company Will Do*

The Eureka Company will, at its option, repair or replace a defective cleaner or cleaner part that is covered by this warranty. As a matter of warranty policy, the Eureka Company will not refund the consumer's purchase price.

## *Warranty Registration*

Please fill out and return the warranty registration card accompanying your cleaner.

## *Obtaining Warranty Service*

To obtain warranty service you must return the defective cleaner or cleaner part along with proof of purchase to any Eureka Authorized Warranty Station. You will find the nearest location in the Yellow Pages, under "Vacuum Cleaners—Service and Repair." Be certain that the Warranty Station is "Eureka Authorized."

For the location of the nearest Eureka Authorized Warranty Station or for service information, telephone toll free:

**USA: 1-800-282-2886**

**Mexico: 5670-6169**

**Canada: 1-800-282-2886**

If you prefer, you can write to The Eureka Company, Service Division, 807 North Main Street, Bloomington, Illinois 61701, USA. In Canada write to The Eureka Company, 866 Langs Drive, Cambridge, Ontario N3H 2N7.

If it is necessary to ship the cleaner outside your community to obtain warranty repair, you must pay the shipping charges to the Eureka Authorized Warranty Station. Return shipping charges will be paid by the Warranty Station. When returning parts for repair, please include the model, type, and serial number from the data plate on the cleaner.

## *Further Limitations and Exclusions*

Any warranty that may be implied in connection with your purchase or use of the cleaner, including any warranty of Merchantability or any warranty for Fitness For A Particular Purpose is limited to the duration of this warranty. Some states do not allow limitations on how long an implied warranty lasts, so the above limitations may not apply to you.

Your relief for the breach of this warranty is limited to the relief expressly provided above. In no event shall Eureka be liable for any consequential or incidental damages you may incur in connection with your purchase or use of the cleaner. Some states do not allow the exclusion or limitation of incidental or consequential damages, so the above limitation or exclusion may not apply to you.

This warranty gives you specific legal rights. You may also have other rights which vary by state.



## *Questions & Answers about Genuine Eureka Products*

**Q:** Why should I use only Genuine Eureka paper bags, belts, and parts in my Eureka vacuum cleaner?

**A:** Using Genuine Eureka Products, which are made to our exacting specifications and engineered with emphasis on quality, performance, and customer satisfaction, ensures the long life and cleaning efficiency of your vacuum cleaner. Overall, this saves you money and helps to keep your home clean.

**Q:** How can I be sure I am using only genuine Eureka products in my vacuum cleaner?

**A:** Typically, packaged products and paper bags can be identified by a "Genuine Eureka Product" symbol (see illustration above). For further identification assistance, you may call our toll-free number, 1-800-282-2886, for the location of a nearby Eureka Authorized Warranty Station.

**Q:** Are there any differences between "made to fit" or "imitation" and Genuine Eureka paper bags, belts, and parts?

**A:** Yes, there are some very important differences in materials, quality, and reliability. Many customers have mistakenly purchased "imitation" paper bags and parts while thinking they purchased genuine. Unfortunately, many of these customers discovered the differences after they experienced related difficulties.

**For Genuine Eureka Value, Accept No Imitations!  
THE EUREKA COMPANY**

Bloomington, Illinois 61701

