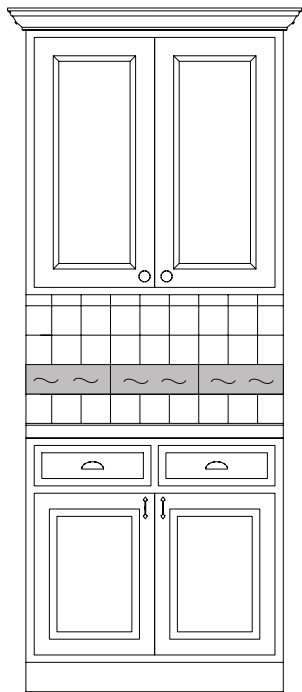


## Backsplash Patterns

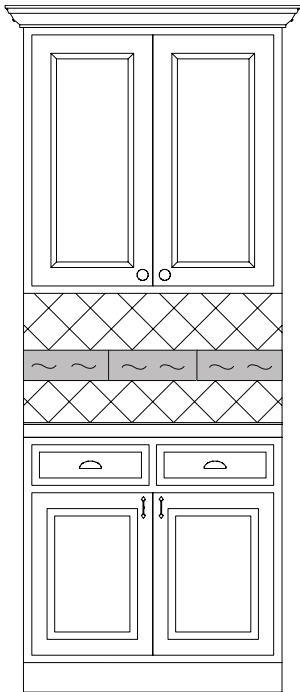


TILESHOP.COM

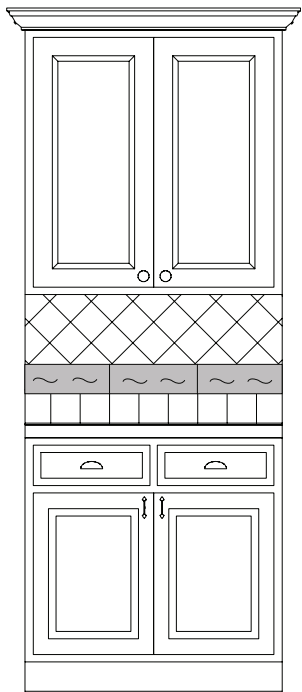
# Backsplash Patterns



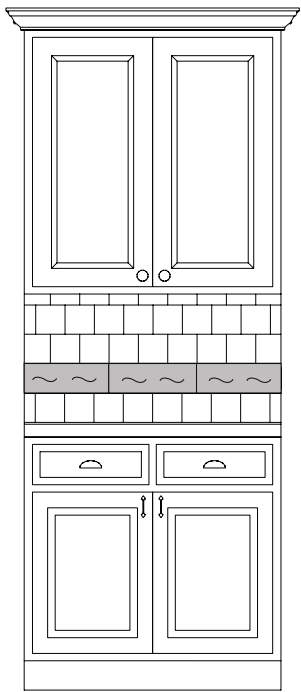
HORIZONTAL STRAIGHT & LISTELLO



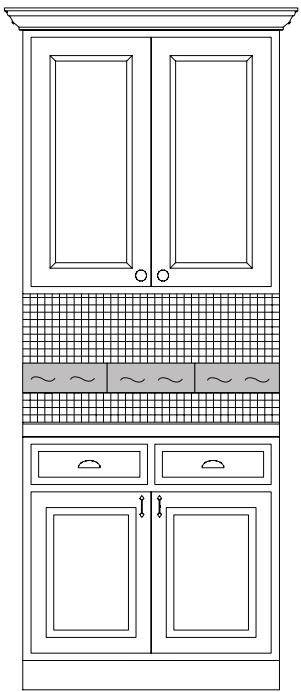
HORIZONTAL STRAIGHT & LISTELLO



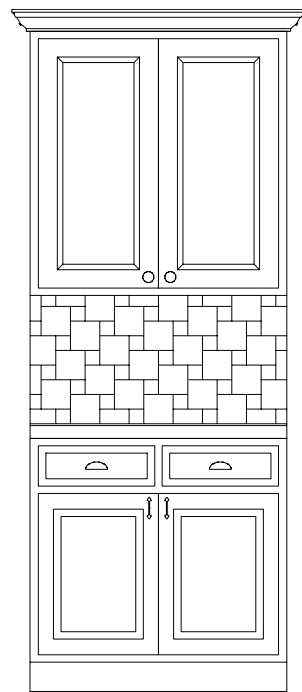
HORIZONTAL STRAIGHT & LISTELLO



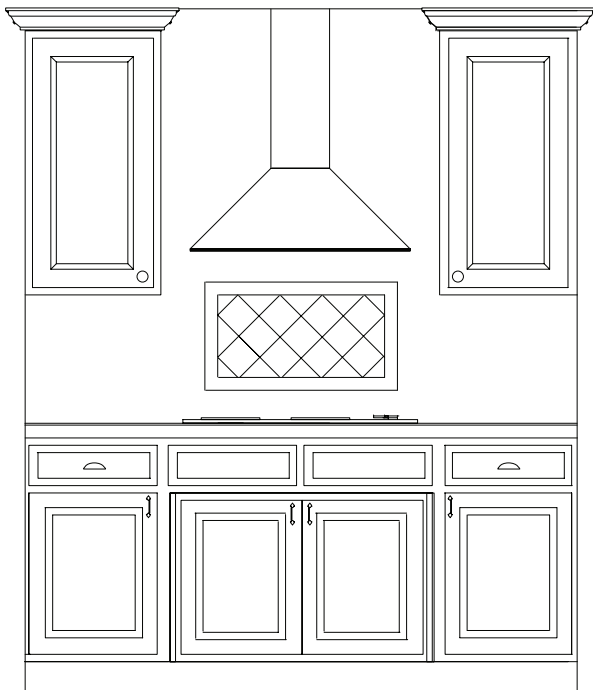
HORIZONTAL STRAIGHT & LISTELLO



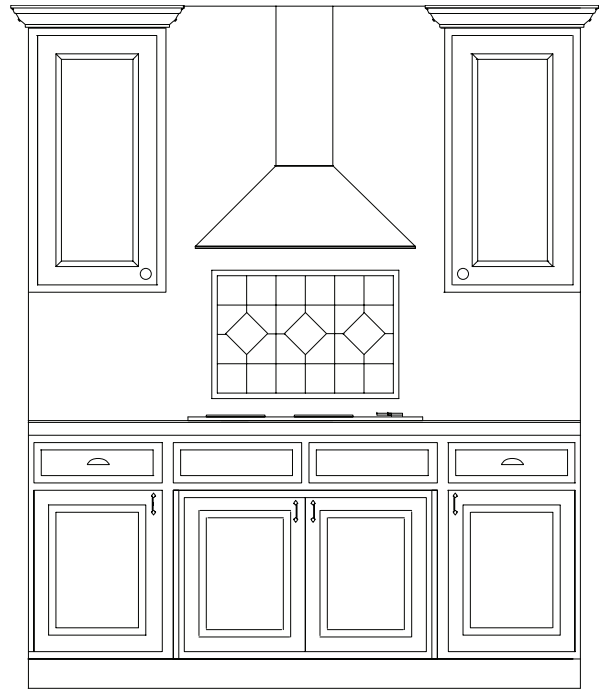
HORIZONTAL STRAIGHT & LISTELLO



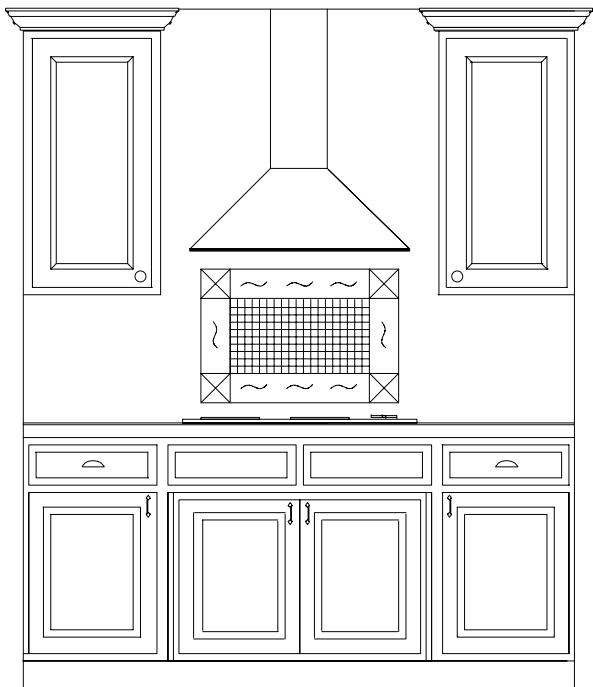
HORIZONTAL STRAIGHT & LISTELLO



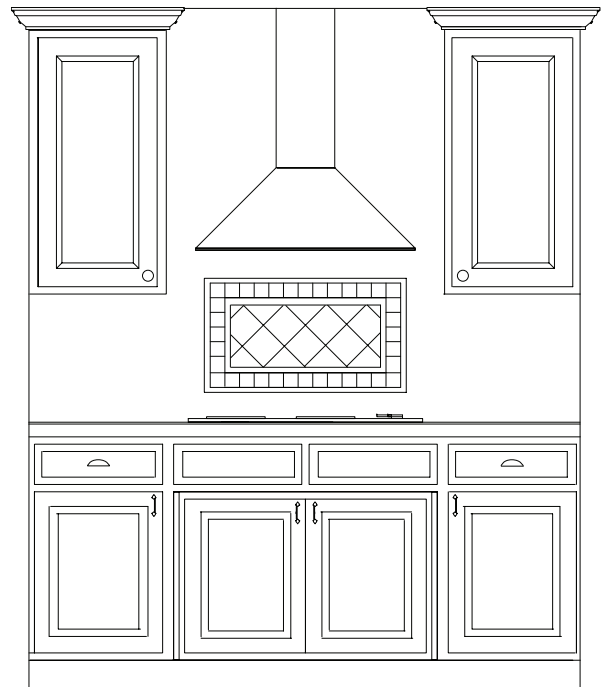
**PROFILE WITH SQUARE DIAGONAL**



**PROFILE WITH SQUARE DIAGONAL  
& SQUARE DECO**



**LISTELLO, LISTELLO OUTCORNER,  
1" MOSAIC**



**PROFILE, 2' MOSAIC, PROFILE,  
SQUARE DIAGONAL**

# Backsplash Pattern Tips & Ideas

**ATTENTION** The backsplash is the easiest area of your kitchen with which to make a design statement. Depending on how it is treated, it can be the kitchen's decorating star, or it can create an elegantly understated backdrop.

**FUNCTION** A tile backsplash protects your walls from all the action in the kitchen. The kitchen is the heart of the home and that home can get dirty. Tile is impervious to spills, drips, and splatters.

**DIRECTION** A vertical pattern will make the backsplash appear taller and a horizontal pattern will make the space seem longer.

**FRAME** Using a picture space in a backsplash helps designate an area of interest or function. Picture frames dress up the plain areas behind sinks and stoves.

**BRIDGE** The backsplash is the bridge between the counter and the cabinets. Consider a tile that coordinates with both of these areas.

**ORDER OF OPERATIONS** If you are putting in a new countertop with your backsplash, install the countertop before the backsplash.

**EXPERIMENT** Before you begin adhering your tile, dry lay the floor in various patterns to help visualize how the tile will look on your backsplash.

**CLEAN** For daily/weekly upkeep and cleaning use Superior Neutral Cleaner for ceramic & porcelain and Superior Antibacterial Cleaner for natural stone. Avoid using harsh acidic cleaners on your tile backsplash.

## BACKSPLASH MEASURING GUIDE

1. Determine the pattern you would like to use.
2. Determine the square footage by measuring the length and width of your space and then multiplying the two measurements.
3. Use linear measurements to estimating, trim, profiles, and listellos. Add 5% or no less than 2 pieces for overages on linear measurements.
4. Add 10% to your calculations for overages on straight set tile and 15% overage for tile set at a diagonal.