

St. Lucie

PUBLIC SCHOOLS



Title 1 Parent Guide

ST. LUCIE COUNTY SCHOOLS ARE ON THE INTERNET! To find out more about our schools, departments, and programs, check out the district's website at www.stlucieschools.org You will find school calendars, test scores, zoning maps, and other useful information.

Title 1 Schools

Allapattah Flats K-8 School



Bayshore Elementary



Chester A. Moore Elementary



Dale Cassens Educational Complex



Dan McCarty Middle School



Floresta Elementary



Forest Grove Middle School



Fort Pierce Central High



Fort Pierce Westwood High



Frances K. Sweet Magnet



Fort Pierce Magnet School of the Arts



Lakewood Park Elementary



Lawnwood Elementary



Manatee Academy K-8



Mariposa Elementary



Morningside Elementary



Northport K-8 School



Oak Hammock K-8 School



Parkway Elementary



Port St. Lucie High



Rivers Edge Elementary



Samuel S. Gaines Academy K-8



Savanna Ridge Elementary



Southern Oaks Middle School



Southport Middle School



St. Lucie Elementary



St. Lucie West K-8 School



Village Green Environmental



Weatherbee



White City Elementary



Windmill Point Elementary

QUICK REFERENCE GUIDE

Registration

A child must be 5 years old on or before Sept. 1 to enter kindergarten.

A child must be 6 years old on or before Sept. 1 and must have attended kindergarten to enter first grade.

To find out which school your child will attend, as well as the documents you will need to register your child, call Student Assignment Office at 772/429-3930 or e-mail student.assignment@stlucieschools.org

Special Programs

| | | | |
|-----------------------------------|--------------|-------------------------------|--------------|
| Alternative Education | 772/429-3965 | Mosaic Digital Academy | 772/429-5504 |
| English Language Learner Services | 772/429-5537 | Exceptional Student Education | 772/429-4570 |
| FDLRS | 772/429-4585 | Gifted Education | 772/429-4570 |
| Guidance | 772/429-4510 | Home Education | 772/429-3930 |
| Hospital/Homebound | 772/429-4588 | Magnet Schools | 772/429-3930 |
| Migrant Education | 772/429-4639 | Voluntary Pre-K Program | 772/429-4634 |

Parent/Community Involvement

| | |
|---|--------------|
| The St. Lucie County Education Foundation | 772/429-5505 |
| Title I Parental Involvement | 772/429-4630 |
| Volunteering | 772/429-3936 |

Frequently Called Numbers

| | | | |
|---------------------------|--------------|-------------------------|--------------|
| District Office | 772/429-3600 | District Communications | 772/429-5502 |
| Personnel/Human Resources | 772/429-7500 | Student Assignment | 772/429-3930 |
| Student Records | 772/429-4520 | Student Services | 772/429-4510 |
| Superintendent's Office | 772/429-3925 | Title I Department | 772/429-5530 |
| Transportation | 772/340-7120 | | |

Other Important Information

A school's dress code usually is included in handbooks or other school documents.

To qualify for free or reduced-price lunches, parents/guardians must meet income eligibility guidelines set by the U.S. Department of Agriculture.

Applications are sent home with students or apply online at www.stlucieschools.org.

The district's website is www.stlucieschools.org.

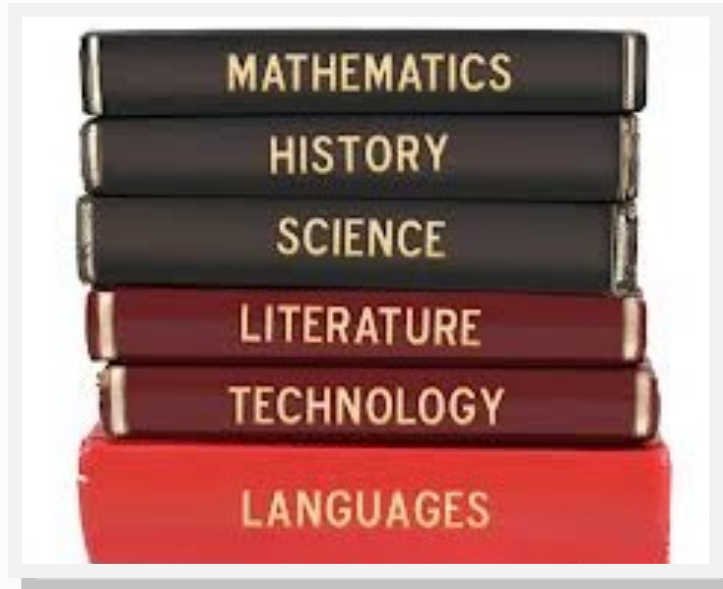
The Florida Department of Education website is www.fldoe.org.

TABLE OF CONTENTS

| | |
|---|--|
| <p style="text-align: center;">CURRICULUM</p> <p>Career & Technical Education Magnet Programs Rigorous Academic Opportunities Specialized Academies Teacher Qualifications</p> | <p style="text-align: center;">PATH TO GRADUATION</p> <p>PSAT PLAN SAT ACT FCAT Advanced Placement Testing Standardized Testing Report Cards and Progress Reports Student Progression/Promotion For The College-Bound Student Changing Path to Graduation</p> |
| <p style="text-align: center;">EDUCATIONAL CHOICE: PARENT OPTIONS</p> <p>Charter Schools Home Education Mosaic Digital Academy/Virtual School Parent Choice Options School Assignment</p> | <p style="text-align: center;">HEALTH</p> <p>Illness Immunization Requirements Medication at School</p> |
| <p style="text-align: center;">SPECIAL PROGRAMS</p> <p>Adult Education Classes Alternative Education Centers English Language Learner Services Exceptional Student Education Services Family Literacy Services FDLRS Guidance and Academic Advisement Mentoring Psychological Services School Age Child Care School Social Work Services Supplemental Educational Services Title I Parental Involvement Tutoring Voluntary Pre-Kindergarten 21st Century Community Learning Centers</p> | <p style="text-align: center;">GETTING INVOLVED</p> <p>Parent-Teacher Organizations School Advisory Council School Improvement Plans The School Board of St. Lucie County Volunteering at School</p> |

CURRICULUM

Attractor Programs
Career & Technical Education
Magnet Programs
Rigorous Academic Opportunities
Teacher Qualifications
Parent Self –Assessment



ATTRACTOR PROGRAMS

Students can attend schools with specialized academies for Engineering, Marine, and Environmental Science Technologies. All approved students will be provided transportation by arterial routing by the school district regardless of the school zone they reside.

FORT PIERCE CENTRAL HIGH

Aerospace Technology
Engineering Technology
Drafting/Illustrative Design Technology
Honors Central/Dual Enrollment
Information Technology

FORT PIERCE WESTWOOD HIGH

Center for Marine and Environmental Science Technologies
Marine and Oceanographic Academy (MOA)
Precision Agriculture/Plant Bio-Technology
Veterinary Science
Medical Assisting/HOSA

FOREST GROVE MIDDLE

Marine and Oceanographic Academy
(MOA) Prep



CAREER & TECHNICAL EDUCATION

The St. Lucie Public Schools offers a variety of Career & Technical Education programs and career academies at our six high schools. Each academy prepares students for postsecondary education and the workforce through the integration of academic and technical skills. Students experience coursework that is aligned with industry certifications allowing them the opportunity to successfully achieve a credential that validates their qualification for employment. These credentials also document student eligibility for college credits statewide through more than 100 statewide Gold Standard Articulation Agreements. Students may also compete in related leadership and technical competitions, and Bright Futures Scholarships.

MAGNET PROGRAMS

Magnet schools are schools with attractor programs. Magnet schools offer unique programs and are committed to academic excellence. Parents may apply for a magnet school any time after their child receives an original birth certificate. Magnet school applications are only available at the Student Assignment Office. Students are assigned according to the date of application.

Fairlawn Elementary (K-5) is a traditional academic, multicultural magnet school. It has a progressive academic program of the highest quality and fosters an environment that prepares students to become productive citizens. (Blue Zone and Green Zone)

Fort Pierce Magnet School of the Arts (K-8) is a unique arts magnet school which interweaves traditional academics with an arts curriculum that features music, art, dance, and drama. The interdisciplinary approach allows students to take an active part in learning, with the opportunity to create, recreate, and make their own observations. (Countywide)

F. K. Sweet Elementary (K-5) is a traditional academic, multicultural magnet school. They are committed to empowering all students with a positive self-image, knowledge, and the confidence to strive for excellence. (Red Zone and Green Zone)

Lincoln Park Academy (6-12) is a high achieving, public academic school that attracts students to Ft. Pierce, Florida from all over St. Lucie County. It is a school where students and adults share a commitment to academic excellence and civil behavior which is infused with an aura of high expectations. (Countywide)



RIGOROUS ACADEMIC OPPORTUNITIES

Each high school offers a variety of programs designed to meet the needs of its students. For full information about the following academic opportunities, please contact your school counselor:

ADVANCED PLACEMENT PROGRAM

Advanced Placement courses offer motivated high school students the opportunity to take college-level courses while in high school. Advanced Placement tests also offer the possibility of earning college credit for those courses, in addition to acquiring college-level skills.

DUAL-ENROLLMENT COLLEGE COURSES

Students take entry-level college courses to earn high school and college credit. The student does not pay the college's application fee or for tuition and books.

INTERNATIONAL BACCALAUREATE (IB)

The International Baccalaureate (IB) Program diplomas are awarded only to those students who complete the program's academically rigorous curriculum and excel on a series of IB exams and special projects. The diplomas awarded by the international program, headquartered in Cardiff, United Kingdom, are recognized by colleges and universities around the world as an indicator of the highest academic achievement.

ADVANCED INTERNATIONAL CERTIFICATE OF EDUCATION (AICE)

The AICE program is a college preparatory curriculum sponsored by Cambridge University in England. While internationally recognized as a university entrance-level qualification, the AICE program provides curricular flexibility. Those receiving the AICE diploma are automatically eligible to receive the Florida Bright Futures

Scholarship at the 100% level. AICE offers a variety of advantages for students who want to pursue an advanced program of study in a comprehensive high school setting.

HONORS COURSES

Honors courses are generally taught from the same lesson plan as regular classes but at a faster pace and in greater depth. Courses with this designation are also offered as part of the high school schedule. Several middle schools are implementing honors courses and programs of advanced academic studies for student readiness for any of the above programs of rigor.



TEACHER QUALIFICATIONS

The federal No Child Left Behind Act of 2001 (NCLB) requires that school districts hire highly qualified teachers. The requirements help us ensure that students receive the best education possible. Teachers of core academic subjects must:

- Have at least a bachelor's degree;
- Hold state certification in the subject taught; and
- Demonstrate competency for the subject matter and grade level(s) taught.

Schools must notify parents or guardians after a class has been taught for four consecutive weeks by a teacher who is not considered highly qualified for that specific subject area. A teacher might not yet meet the "highly qualified" designation because of one of these reasons:

- They have moved here from another state and are teaching under provisional status, pending final paperwork from the State of Florida that certifies they have fulfilled all of the requirements of teaching in Florida.
- They are adding an endorsement area, but have completed only a portion of the university coursework required for the new endorsement, and they are teaching courses in the new area under provisional status for which the state has waived licensing criteria while they finish the required course-work. They require a competency test for the subject matter they are teaching.
- They need to verify their highly qualified status from another district/state.

As a parent, you have the right to know the qualifications of your child's teacher. Specifically, you have the right to ask for and receive the following information:

- If they meet the qualifications for the grades and subjects taught;
- If they are working under emergency or provisional status;
- Their college major and any advanced degrees;
- The subject area of their certification or degree; and
- If paraprofessionals provide services to your child and, if so, their qualifications.

In addition, parents have the following rights and responsibilities:

- To be involved in their child's school; and
- To provide input in the plans and policies of your child's school.

If you would like to receive any of this information or have questions, you may contact the school principal.



Parent Self-Assessment: Are you involved in your child's education?

The St. Lucie Public Schools is working hard to provide our 40,000 students with the best possible education as student achievement remains the district's number one priority. Parents, please take a moment to take our self-assessment that will determine how involved you are in promoting a positive education for your child. Read each statement and place a check mark on the lines indicating that you agree with the statement. After you completed the form, reflect on how you are involved in your child's education and what you can do to become more involved.

1. _____ I stress the importance of education and doing one's best in school.
2. _____ I express to my child that he/she has the ability to be successful.
3. _____ I help my child to set short and long term educational goals.
4. _____ I celebrate my child's academic achievements and successes.
5. _____ I read to as well as with my child.
6. _____ I ensure that my child has a consistent time and place to do homework.
7. _____ I provide my child with the materials needed to complete assignments.
8. _____ I regularly ask to see my child's work that is being done in school.
9. _____ I attend workshops and parent involvement events that provide strategies for helping my child at home.
10. _____ I monitor what programs my child watches on television.
11. _____ I teach and reinforce positive behaviors such as respect for self and others, hard work and responsibility.
12. _____ I am familiar with and enforce school behavioral expectations.
13. _____ I establish a regular routine for my child such as bedtime, study time, dinner time, and play time.
14. _____ I encourage my child to accept responsibility for his/her behavior.
15. _____ I ensure that my child is in attendance and on time for school each day.
16. _____ I monitor and promote my child's participation in extracurricular and after school activities.
17. _____ I maintain regular communication with my child's teacher through face to face conversations, e-mail,
18. _____ I prepare for and attend teacher conferences, Individual Education Plan meetings, or other individual student meetings.
19. _____ I attend Open House, Science Night/Fair, plays, musical events, class trips, sporting events, curriculum nights or other school activities.
20. _____ I volunteer at the school when possible.



CHARTER SCHOOLS

Charter schools are publicly funded elementary or secondary schools in the United States that have been freed from some of the rules, regulations, and statutes that apply to other public schools in exchange for some type of accountability for producing certain results, which are set forth in each school's charter.

FAU/SLCSB Charter School K-8
Palm Pointe Educational Research School at Tradition
10680 Academic Way
Port St. Lucie, FL 34987
772/345-3245
www.tradition.fau.edu

Renaissance Charter School of St. Lucie K-6
10900 SW Tradition Parkway
Port St. Lucie, Florida
772-924-2890
www.traditioncharter.org

Nau Charter School K-8
4390 SW Yamada Drive
Port St Lucie, FL 34953
772/237-8600
www.naucharterschool.com

Renaissance Charter School of St. Lucie
(Grades PreK-8)
300 NW Cashmere Boulevard
Port St. Lucie, FL 34986
866/KIDS-USA
www.charterschoolsusa.com

College Preparatory Academy
501 NW California Blvd
Port St. Lucie, FL 34986
772/323-3747
www.cpatc.org

HOME EDUCATION

The purpose of the Home Education Program is to permit parents to comply with the compulsory school attendance law while teaching their child(ren) at home. To start a Home Education Program, a parent must provide written notice to the Department of Student Assignment of an intent to establish and maintain a Home Education Program for students ages 6 through 16. The parent assumes the responsibility for providing the curriculum, educational materials, and evaluations necessary to determine student progress. A family may, at their expense, enlist the help of a tutor, Florida Virtual School for students in grades 6-12, correspondence courses, or other means to provide the sequentially progressive instruction. Information, requirements, and home school forms can be found on the district's website at **www.stlucieschools.org** under Parents/Students tab or Student Assignment Office/429-3390.

Assignment Office 772/429-3930.



MOSAIC DIGITAL ACADEMY

A virtual school experience with a personal touch. This is a self-selecting, student-parent choice program for kindergarten through grade 12 students whose primary residence is St. Lucie, Martin, or Okeechobee counties.

Our district virtual instruction program was established in 2009 in accordance with Florida Statute 1002.45 in order to provide students with high quality, full-time instruction in an online environment. Now with *Mosaic Digital Academy*, our community can experience a more personalized full-time virtual school opportunity for students in grades K-12.

This progressive choice program is providing expanded educational services to a wider student community for anywhere, anytime learning via Internet instruction along with traditional teaching materials. Our instructors are local and meet the State of Florida Department of Education certification and requirements for highly qualified teachers. Contact and for additional information phone 772/429-5504.

PARENT CHOICE OPTIONS

Educational choice provides parents with a choice of options on how best to educate their child(ren). Parents may choose to send their child(ren) to a charter school or to participate in Public Virtual School. They may choose to home educate their child through provisions in state law that recognize the right of the parent to select this type of educational placement. They may choose magnet schools or request a school transfer based on medical, psychological, or other needs-based transfers as allowed by school board policy. For more information on choice or transfer information, call Student Assignment Office at 772/429-3930.

SCHOOL ASSIGNMENT

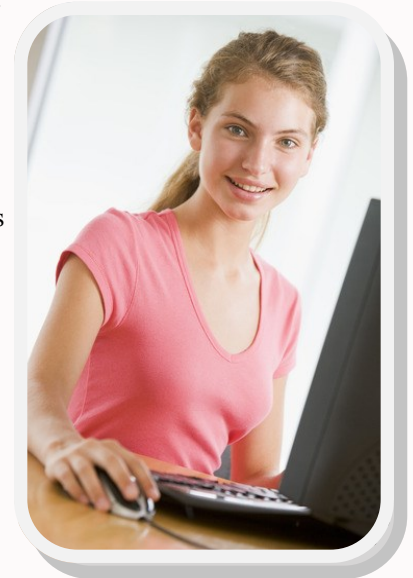
In St. Lucie County, the system of one neighborhood, one school, has given way to a concept of a larger community with several schools. What had become an annual ritual of redrawing school boundaries, moving children from one school to another to accommodate explosive growth, has been replaced with an open enrollment system where parents select from a variety of schools close to where they live.

Once children are enrolled in a school, parents have the assurance that they can remain in that school through the highest grade or until the parents decide to make a change, unless they move to a different zone for which that school is no longer an option.

ZONES

The district is divided into three elementary/middle zones with Midway Road and Florida's Turnpike being the dividing lines. The Green Zone is north of Midway Road. The Blue Zone is south of Midway Road and east of Florida's Turnpike. The Red Zone is south of Midway Road and west of Florida's Turnpike. High school has four zones, please check boundaries on the district website or contact the Student Assignment Office.

Students will be assigned to a school within their regional school zone. Parents have the flexibility to limit their school choices within their regional school zone utilizing Transportation Services Areas (TSA's). TSA's are zip code specific. Schools within the TSA's are closer to family residences and/or streamline the transportation process.



HOW TO RECEIVE A SCHOOL ASSIGNMENT FOR YOUR CHILD

If your child is new to the St. Lucie Public Schools you must complete an application for your child. Applications are available in the Student Assignment Office located at 4204 Okeechobee Road, Fort Pierce, at any school in the district, or on-line (except high school).

Students who are changing schools within the district (moving from elementary to middle school or middle school to high school) must complete an application for a school assignment, except students currently enrolled in a K-8 school.

Students who move from one zone to another zone within the district must complete an application for their new school zone. The chances of receiving one of your top choice schools will improve by participating in the open enrollment period.

DO YOUR HOMEWORK!

The more you know, the better equipped you will be to make smart choices for your child. Please review a listing of all schools in the district, divided by Zones. You will have to rank the schools in your zone according to your preference.

HOW THE PROCESS WORKS

Once the application period ends, assignments are computer generated. Each application is sorted by giving priority to (1) siblings wanting to attend the same school and (2) students living within proximity areas around each school.

APPLICATION PERIODS

There is one open enrollment period for Elementary and Middle schools which is subject to change yearly. However, open enrollment normally starts in March. After open enrollment ends students entering school or moving out of zone during the current year are handled on an individual basis through the Student Assignment Office.

High School registrations are completed for new students entering the district at any time during the school year.

WHAT HAPPENS IF YOU DO NOT RECEIVE YOUR FIRST SCHOOL CHOICE?

Students who do not receive their first or second choice are placed on a wait list for their first choice school and are notified if a vacancy opens in their grade level. Once school begins, students must attend their assigned school in order to remain active on the wait list. The wait list is active from the date that it is completed until the end of the first nine weeks.



SCHOOL ASSIGNMENT APPLICATION REQUIREMENTS

Any parent or guardian registering students in the St. Lucie County School District for the first time must bring the following documents when visiting a school or the Student Assignment Office. **Assignments cannot take place without all of these documents:**

Original birth certificate

- Social Security Card (if available)
- Proof of custody (if the child is not living with both natural parents).
- Name and address of last school attended
- Copy of Individual Education Plan (IEP) if your child is in an Exceptional Education Program
- Proof of Residency (Two of the following documents are required):
 - Electric, water, or land-line telephone bill (showing parent/guardian name and physical address)-within 30 days
 - Signed lease agreement-within 60 days
 - Mortgage coupon/letter (if you are building or buying a home)-within 30 days
 - Official rent receipt-within 30 days
- Living with relatives or friends: contact Student Assignment.

FINAL STEP

After the assignment process has been completed, parents must enroll their child(ren) at the assigned school(s) by providing the above documentation along with the following:

Health Examination (physical- Blue DH3040). The exam must be dated within 12 months prior to enrollment. Not required for students transferring from any Florida public or private school, if the requirement has already been met. (For kindergartners and new Florida residents) obtained from any doctor, clinic or Health Dept. 462-3800

- Florida Certificate of Immunization (original DH680 card). If you have moved from another state, you will need to take your current immunization record to the St. Lucie County Health Department 5150 NW Milner Dr, Port St Lucie, FL, (772) 462-3800, doctor or clinic. (For kindergartners and new Florida residents)
- Assignment postcard.



SPECIAL PROGRAMS

Adult Education Classes
Alternative Education Centers
English Language Learner Services
Exceptional Student Education Services
Family Literacy Services
FLDRS
Guidance and Academic Advisement
Mentoring
Psychological Services
School Age Child Care
School Social Work Services
Title I Parental Involvement



ADULT EDUCATION PROGRAM

At Indian River State College (IRSC), you can start preparing for your GED high school diploma at any time - with free classes offered at over 30 locations in four counties. GED review and Adult High School classes are also offered on-line. For more information, call 772/462-4722 Ext. 7400 or 1-866-792-4722, Ext. 7400.

ALTERNATIVE EDUCATION CENTERS

Under Alternative Education, the district offers educational services to several categories of student needs in nontraditional settings:

PACE CENTER FOR GIRLS

PACE Center for Girls, Inc. is a not-for-profit 501(c) 3 corporation that provides a non-residential delinquency prevention program, targeting the unique needs of females 12 to 18 who are identified as dependent, truant, runaway, delinquent, or in need of academic skills. PACE (Practical Academic Cultural Education) accepts referrals from the juvenile justice system, the Department of Children and Families, school personnel, community services agencies, parents, family members, friends, and self-referrals. Its purpose is to intervene and prevent school withdrawal, juvenile delinquency, teen pregnancy, substance abuse, and welfare dependency in a safe and nurturing environment. PACE programs provide the following services: academic education, individualized attention, a gender-specific life management curriculum, therapeutic support services, parental involvement, student volunteer service projects, and transition follow-up services. Every girl at PACE sets individual educational and social goals that are focused on earning a high school diploma, re-entering public school, attending college, getting vocational training, joining the military, or entering the private workforce. After program completion, PACE transition counselor continues to monitor each girl's educational and personal development with three years of follow-up case management. Contact PACE 772/595-8880.

THE DALE CASSENS EDUCATION COMPLEX (DCEC)

The Dale Cassens Education Complex hosts **five** separate programs for students in St. Lucie County. **The Lucie Adolescent Parenting Program (LAPP)** is housed on campus and provides a day-care educational program for teen parents while they attend DCEC and work toward graduation requirements. **The middle grades accelerated program** is referred to as the 7/8/9 Program. It provides over-aged 8th graders with a rigorous academic focused program of study, when completed, students transition with up to 5.0 high school credits making them 10th graders. There is also a class of 7th graders that follow this same model. Students successfully exiting this model will be first semester 9th graders. Two other programs on campus are for middle and high school students. Students who attend these programs are placed due to: **behavioral misconduct, returning from DJJ programs**, wanting a small academic setting and voluntarily enroll, and/or are teen parents. Our fifth program at the Dale Cassens Education Complex serves students who have **special needs** in grades 6 through 12. The students at this center may present emotional/behavioral challenges. Dale Cassens provides a therapeutic setting for children with severe disabilities who have not achieved success on a comprehensive school campus. Individualized and small group instruction, social skills training, and mental health counseling are provided. Key elements of the school-wide behavior management system are based on the Positive Behavior Support model. Contact 772/468-5190.



THE PERFORMANCE-BASED DIPLOMA PROGRAM AT FORT PIERCE CENTRAL (PBDP)

This program is open to students in St. Lucie County who are over-age-for-grade in high school. The Guidance Departments of all schools may assist students and families interested in this program with the application process. A screening committee will review the application packet and direct prospective students to the suggested educational placement.

PBDP has been existence for over 21 years and has a proven track record. It is built on the premise that each student is unique and learns best through an individualized plan. Using the computer-assisted instructional software, *Edgenuity (E2020)*, students are able to demonstrate progress at their own pace. The team of certified teachers facilitates all lessons and activities and monitors student progress weekly.

Eligible PBDP students may participate in Dual Enrollment classes at Indian River State College (IRSC). These vocational and certificated programs also satisfy graduation requirements. IRSC vocational programs include Automotive Technology, Early Childhood Education, and Office Skills Training. During the day, students are transported by bus to the IRSC campus and returned to school to continue their academic studies. After all graduation requirements are met, students earn a standard high school diploma.

THE PERFORMANCE-BASED DIPLOMA PROGRAM EXTENDED DAY SITES AT VARIOUS LOCATIONS IN THE COMMUNITY

Students must be 16 to 22 years of age to participate in the program. PBDP is located on multiple sites in the community which allows students to have flexible schedules to accommodate employment and also complete their academic subjects on E2020. Students who have dropped out are encouraged to attend, as well as those who need to “catch up” to their graduating peer group.

For more information on either of the above mentioned programs, please call 772-468-5880. We are excited about the endless possibilities that await St. Lucie County students and look forward to hearing from you today.



ENGLISH LANGUAGE LEARNER SERVICES

ESOL is an instructional program that assists students in learning English speaking, reading, writing and listening. It is important for a student to receive the services because the student is going to need support to adjust to the educational system and learning the English language. We also need to provide the services because it is part of the law.

What is the process to identify my child as an ELL student?

The parent completes a Home Language Survey (HLS). This survey is a part of the enrollment process. The following three questions will need to be answered on the HLS:

- Does the student most frequently speak a language other than English?
- Did the student have a first language other than English?
- Is a language other than English used in the home?

If you answered “yes” to any of the these questions your child will be evaluated to determine how well he/she speaks English. In other words, if a language other than English is the answer to any of the questions, the student will take the Initial Placement Test. Once the results show that the student is in need of help to learn English, he/she will be identified as an ELL student and will begin receiving services from the ESOL Program. This is important in order to support your child as he/she learns English.

Student’s language proficiency is assessed every year to determine progress and eligibility for exit from the ESOL Program. Upon exit student’s progress will continue to be monitored for two years. ELL students are expected to meet the same challenging state academic standards as all students are expected to meet.

Parents of ELL students are encouraged to participate in all parent activities related to the school in which their child is enrolled and will receive school communications in their language when possible. Translators are available at schools, either by school staff or by district staff with prior arrangements when feasible. Two ELL-specific parent activities are:

THE ELL COMMITTEE

This committee meets at the school to act on decisions important to the instruction of the ELL student. Parents are always invited to these meetings and are encouraged to attend. A parent may request an ELL Committee meeting to address issues related to the student.

THE PARENT LEADERSHIP COUNCIL

This is committee composed by parents, teachers, administrators and district staff that meets once a month to discuss ways to increase students’ English language and academic learning opportunities.

EXCEPTIONAL STUDENT EDUCATION (ESE) SERVICES

The purpose of Exceptional Student Education (ESE) services is to ensure a free, appropriate public education in the least restrictive environment for all students and to provide a quality educational program with high expectations. Specialized instruction is provided for students, which enables them to have full access to the curriculum with the appropriate and allowable accommodations.

Exceptional Student Education (ESE) services are available for students with disabilities ages 3 to 21 with the following disabling conditions:

| | | | |
|--------------------------|-------------------------|------------------------------------|----------------------------------|
| Autism Spectrum Disorder | Deaf or Hard of Hearing | Developmentally Delayed (Ages 3-6) | Dual-Sensory Impaired Emotional/ |
| Behavioral Disabilities | Hospitalized/Homebound | Intellectual Disabilities | Language Impaired |
| Orthopedically Impaired | Other Health Impaired | Speech Impaired | Specific Learning Disabilities |
| Traumatic Brain Injury | Visually Impaired | | |

Exceptional Student Education helps students access the general curriculum by providing the necessary supports, services, and accommodations. These specialized services, related services, and supplemental aids and services are identified in an Individualized Educational Plan (IEP) specifically written for the student and designed to allow the student to derive educational benefit.

Specialized accommodations may be made for the student with a disability if they are identified and written in the IEP. Some examples of classroom accommodations may include:

| | |
|--|---|
| Teaching methods and presentation of materials | Increase or decrease in instructional time |
| Variation in instructional methodology | Specialized communication systems or assistive technology |

Some accommodations for state or district-wide testing may include:

| | | | | |
|--------------|------------|------------|----------|-------------------|
| Presentation | Responding | Scheduling | Settings | Assistive Devices |
|--------------|------------|------------|----------|-------------------|

Screening, evaluation, and referral services are available to preschool children ages 3 through 5 from the Florida Diagnostic and Learning Resource System (FDLRS). Parents who would like more information may contact the FDLRS Office at 772/429-4585.

JOHN M. MCKAY SCHOLARSHIPS

The John M. McKay Scholarship option is a state operated voucher program for exceptional education students with Individualized Educational Plans (IEPs). For questions regarding the John M. McKay Scholarship program, visit the Web site at www.floridaschoolchoice.org or call the Florida Department of Education's Office of Independent Education at 800/447-1636.

Exceptional Student Education (ESE) Services for Students Identified as Gifted

The St. Lucie County School District is committed to an educational program that provides a free, appropriate public education which will enable students to progress in the general curriculum to the maximum extent appropriate. Specially designed instruction and related services are planned to meet the unique needs and goals of each student. The program for students identified as Gifted recognize the unique value, needs, and talents of individual students. Students identified as Gifted pursue courses with increased rigor and relevance. Programs for students identified as Gifted provide an environment to enhance the development of students who possess outstanding intellectual ability. Programs encourage the development of academic ability, creative and critical thinking, communication skills, leadership qualities, self-realization, social responsibilities, and independent study and research skills. These programs enhance the transfer of learning from the classroom to the workplace.

WHAT ARE THE ELIGIBILITY REQUIREMENTS FOR PLACEMENT IN THE GIFTED PROGRAM?

In Florida, students are eligible for gifted services if they meet the criteria outlined in Florida Board of Education Rule 6A-6.03019, FAC. A gifted student is one who has superior intellectual development and is capable of high performance. Eligibility criteria includes a demonstrated need for the program, a majority of gifted behavioral characteristics as indicated on a standard scale or checklist, and superior intellectual development as measured by an intelligence quotient of two (2) standard deviations or more above the mean on an individually administered standardized test of intelligence. For more information about ESE programs and services, please contact your child's school counselor or call the ESE Department at 772/429-4570.

FAMILY LITERACY SERVICES

The district has several state and federal grants and initiatives to promote and provide services and resources for family literacy. All program components employ methods that are essential to literacy. A few of these include Families Building Better Readers and Mysteries in the Middle. Many schools have parent resource centers. Title I activities place a strong emphasis on training parents to become their children's first and most important teachers. Please call your school office for more information about programs that may serve your school.

FDLRS CHILD FIND

Offers information and free screening for children (birth-5 years) who may have difficulty: learning, speaking, vision, playing, walking and hearing. Contact/ 1(800) 358-8525.

GUIDANCE AND ACADEMIC ADVISEMENT

The primary goal of the K-12 Comprehensive Guidance Program is to assist all students in acquiring the skills, knowledge, and attitudes needed to become effective students, responsible citizens, productive workers, and lifelong learners. The school counselor, a certified professional with a master's degree, is the provider and manager of the school's comprehensive guidance program.

Professional school counselors support students in their efforts to learn, assist them in their personal and social growth, and guide them in their transition from school to careers. They teach many "life skills" including test taking, decision making, demonstrating respect for the feelings and beliefs of others, college and career planning, locating sources for career and job information, anger management, and conflict resolution. They are trained to conduct small-group sessions focusing on issues such as "changing families," test anxiety, getting along with others, and self concept. Professional school counselors consult with families, teachers, and community members in an effort to help students achieve.

Professional school counselors are located in all schools. Parents are encouraged to contact their child's school counselor for additional information specific to the school.

MENTORING

Research shows mentoring can be extremely helpful to young people. Mentors help reinforce high expectations, promote the development of skills, improve self-image, and support goal setting in youth today. A mentor can be anyone such as a parent, grandparent, extended family member, neighbor, clergy, or a person from an agency specializing in matching mentors with youth. Single parent families with youth between the ages of 6 and 12 can contact the Big Brothers Big Sisters Program at 772/466-8535 to learn more about how their child can be connected with a "Big Brother" or "Big Sister" who can provide support and guidance to your child. Youth of any age can benefit from mentoring in their church groups or programs such as:

Big Brothers Big Sisters (772/466-8638)
Boy Scouts of America (561/694-8585)

Boys and Girls Club of St. Lucie County (772/873-2848 or 772/460-9918)
Girl Scouts of America (772/427-0177)

PSYCHOLOGICAL SERVICES

A school psychologist has several school assignments within the district. The primary roles of the school psychologist are to assist the school in providing appropriate classroom academic and behavioral interventions; participate in the Problem Solving Team process; administer psych educational assessments; and provide support services to identified students. Other services provided by the school psychologists are:

Intervention selection and design, implementation, and progress monitoring
Classroom observations

Consultation with parents, school staff and other professionals
Evaluation research and design

Contact your school or Student Services at 772/429-4510 for more information regarding psychological services.

SCHOOL-AGED CHILD CARE

The Before and After Care Program offers supervision and a variety of enrichment activities for children in kindergarten through fifth grade at many elementary locations. The program is fee-supported by those using its services. Daily activities include homework time, supervised free play, art drama, crafts, dance, and organized games. Children remain at school enrolled in a safe, convenient, and affordable program. For more information, contact your child's school.

SCHOOL SOCIAL WORK SERVICES

A social worker serves each school. Referrals are accepted from school personnel, parents, and community agencies (with parent consent). The primary role of the school social worker is to provide the home, school, and community connection that is necessary for learning. The role of the social worker includes:

Consultation with students, parents, school staff, and other professionals
Child and family advocacy
Truancy prevention and intervention
Increasing parent participation

Problem Solving Intervention Team
Agency referral and networking
Family and school liaison
Completes psycho/social histories and adaptive behavior scales

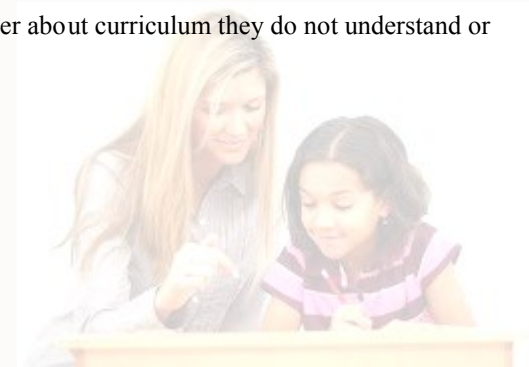
Contact your school or Student Services at 772/429-4510 for more information.

TITLE I PARENTAL INVOLVEMENT

The district's Title I Department offers a variety of presentations to parents whose children attend any of the district's Title I schools. For a list of upcoming events, call 772/429-4630.

TUTORING

Most students will need help with some coursework during their school career. Encourage your child to talk to the teacher about curriculum they do not understand or question. If outside tutoring is necessary there are several places you and your child can turn for help.



Classroom Teacher’s Association (CTA)

The CTA maintains a list of district teachers who are willing to tutor students beyond the instructional day. Call 772/464-6430 for additional information.

Academic Support Center at Indian River State College

Indian River State College (IRSC) provides an opportunity for students to get assistance with challenging courses. The Academic Support Center is available on all IRSC campuses at no cost. Instructors provide assistance in mathematics, science, English, reading, college entrance/placement skills, study skills, and more. This Web site provides additional information as well as links to resources: www.irsc.edu (select “students” then scroll down to “tutoring”). For more information, call 1-866-866-4722.

FCAT Explorer

FCAT Explorer is a set of free, Web-based practice programs. The content is built from the Sunshine State Standards that are tested on the FCAT. Kids can practice by themselves because the programs give them corrective feedback and learning guidance. You can use the FCAT Explorer Parent & Family Guide for free, and you don’t need a password. Go to www.fcatexplorer.com and click Parent & Family Guide. It’s currently available in English, Spanish, and Haitian-Creole. You’ll find information about FCAT

Explorer programs, the Sunshine State Standards, the many ways you can help your child succeed, and much more!

VOLUNTARY PRE-KINDERGARTEN (VPK)

The Voluntary Pre-kindergarten (VPK) Program is based upon a state law which provides any child residing in Florida who is 4 years of age on or before September 1st of the upcoming school year an opportunity to receive 540 hours during the school year or 300 hours of a summer program focusing on preparing them for kindergarten. The St. Lucie Public Schools have VPK classrooms in the following schools:

Bayshore Elementary
Lakewood Park Elementary (2)
Lawnwood Elementary
Samuel S. Gaines Academy(2)
Savanna Ridge Elementary
Northport K-8

C.A. Moore Elementary (2)
Weatherbee Elementary (2)
Mariposa Elementary
Parkway Elementary
St. Lucie Elementary

Fort Pierce Magnet School of the Arts (2)
White City Elementary

For more information, call 772/429-4634

21st CENTURY COMMUNITY LEARNING CENTERS (CCLC)

The St. Lucie Public Schools 21st Century Community Learning Centers (CCLC) Program is a federally funded, after-school program operating in six schools:

| | |
|-----------------------|--------------|
| C.A. Moore Elementary | 772/468-5315 |
| Lawnwood Elementary | 772/468-5740 |
| Northport K-8 | 772/340-4700 |
| Parkway Elementary | 772/340-4800 |
| Samuel Gaines Academy | 772/462-8888 |
| Weatherbee Elementary | 772/468-5300 |

The programs, which are offered at no cost to students or families, provide a safe environment during non-school hours for additional education opportunities. Each school operates a unique program of services based on the needs of the community, with the same set of goals as its premise: Academic Enrichment in Reading and Language Arts, Academic Enrichment in Science and Mathematics, Personal Enrichment, and Educational Services to Adult Family Members. Priority of service is offered to students of Title 1 eligible schools, with academic needs in Reading and/or Math (Level 1 or 2 in FCAT). Each school is limited to the number of students that can be served and continued funding is contingent on student attendance each day of the program.



GRADUATION PATH

PSAT

The PSAT is designed for sophomores or juniors. It can be used as practice for the SAT, which the student will take the following year. In the 11th grade, it is used to determine which students will participate in the National Merit Scholarship Program. The state of Florida pays for all sophomores to take the PSAT. Additional information is available at www.collegeboard.org.

PLAN

Like the PSAT, the PLAN, previously called the P-ACT, is designed for sophomores and juniors as a practice test for the ACT. Additional information is available at <http://www.act.org/plan/>.

SAT

The SAT is a test of reasoning based on knowledge and skills developed by the student in school coursework and is used for college admissions. The new SAT that was introduced in March of 2005 provides three separate scores: math, critical reading, and writing. Achievement tests in various subject areas are offered in conjunction with the SAT. The best time to take an achievement test is just after finishing the course so the information is fresh. Additional information is available at www.collegeboard.org.

ACT

This test also is used for college admission. It is designed to measure classroom achievement in four areas: English, mathematics, reading, and science. Additional information is available at www.act.org.

ADVANCED PLACEMENT EXAMS

Advanced Placement (AP) examinations allow students enrolled in AP courses to demonstrate college-level achievement in many subject areas. Students who successfully demonstrate high achievement may receive college credit, advanced standing in a subject required in their college curriculum, or both. The tests are given in May. Please see your child's guidance counselor for specific information and advice. Additional information is available at www.collegeboard.org.

FLORIDA COMPREHENSIVE ASSESSMENT TEST (FCAT)

The Florida Comprehensive Assessment Test® (FCAT) is part of Florida's overall plan to increase student achievement by implementing higher standards. The FCAT, administered to students in Grades 3-11, consists of criterion-referenced tests (CRT) in mathematics, reading, science, and writing, which measure student progress toward meeting the Sunshine State Standards (SSS) benchmarks.

St. Lucie Public Schools are meeting the needs of the lowest performing students, as evidenced by the learning gains in many schools. As the state has raised the bar, administrators, teachers, students, parents, and volunteers have worked diligently to meet the challenge.

STANDARDIZED TESTING

Standardized tests are given to large numbers of children in a standard way: the same directions, the same test conditions, and the same amount of time allowed. Parents receive information about any standardized tests that their children take.

REPORT CARDS AND PROGRESS REPORTS

Report cards are sent home every nine weeks to provide information about your child's progress in school, including grades, behavior, and attendance. Grades reflect a teacher's assessment of your child's classroom performance based on test, projects, checklists, classroom assignments, homework, and classroom observations. A teacher may indicate on the report card that a conference is needed. Some schools use a parent conference to distribute the report card. Please contact your child's teacher if you have any questions on your child's progress in school.

Midway through each grading period, a child takes home a progress report so that the student and the parents/guardians will have an idea of how the student is progressing. If needed, a parent may request a weekly progress report.

STUDENT PROGRESSION/PROMOTION

The purpose of the instructional program in the schools of St. Lucie County is to provide appropriate instructional and selected services to enable students to perform at or above their grade level academically. Promotion, however, is based primarily on student achievement and is not automatic. A student may not be promoted based on age or other factors that constitute social promotion (F.S. 1008.25).

Decisions regarding student promotion, retention and good cause placement are primarily the responsibility of the individual school's professional staff. The final decision in regard to grade placement is the responsibility of the principal.

Student promotion in St. Lucie County is based upon evaluation of each student's achievement in terms of appropriate instructional goals. The determination should reflect teacher judgment based upon the following:

- (1) successful progress in the county adopted curriculum
- (2) progress monitoring
- (3) classroom assignments
- (4) daily observation
- (5) standardized tests, and
- (6) other objective data

The primary responsibility for determining each student's level of performance and ability to function academically, socially and emotionally at the next grade level is that of the classroom teacher, subject to review and approval of the principal.

Please visit the SLCS D Web site to access the Student Progression Plan (from the home page at www.stlucieschools.org select "Parents & Students" and then "Student Progression")

HIGH SCHOOL GRADUATION CREDIT REQUIREMENTS

Starting the 2012-2013 school year, Florida students entering their first year of high school may choose from five different graduation options: **24-Credit Program**; a three-year, **18-Credit Career Preparatory Program**; **a three-year, 18-Credit College Preparatory Program**; **the International Baccalaureate Diploma Program**; or **an Advanced International Certificate of Education Program**. All of these graduation paths include opportunities to take rigorous academic courses designed to prepare students for their future academic and career choices. All students, regardless of graduation program, must still earn a specific grade point average on a scale of 4.0 and achieve passing scores on the Grade 10 Florida Comprehensive Assessment Test (FCAT) in order to graduate with a standard diploma.

In addition to the above mentioned graduation options, some students with disabilities can earn a Special Diploma. For specific graduation options for students with disabilities, contact your child's school counselor, exceptional student education teacher, or visit www.fldoe.org/ese/pdf/diploma.pdf.

FOR THE COLLEGE BOUND STUDENT

The school counselor is the key contact for academic advice to prepare for college. Information on courses, testing dates, application and admittance, and other appropriate dates can all be found in your school's guidance office. For additional information on college preparation, visit the Florida Academic Counseling and Tracking for Students (FACTS) Web site at www.facts.org. Scholarship information can be obtained through the school's guidance office or on the district's website: www.stlucieschools.org.

Your Path to Graduation Is Changing

The State of Florida is phasing in new, additional graduation requirements based on the year a student enters high school.

For the students that entered ninth grade

2012-2013

- If you are enrolled in Algebra, you will take a state End of Course Exam (EOC). You must pass the test at a Level 3 to earn the course credit. Algebra credit is required for graduation.
- If you are enrolled in a Geometry course, you will take a state EOC exam and must pass the exam at a Level 3 or higher to earn credit. Geometry credit is required for graduation.
- If you are enrolled in Biology, you will take a state EOC exam and must pass the exam at Level 3 or higher to earn the course credit. Biology credit is required for graduation.
- You will take FCAT Writing and Reading in 10th grade and must pass the FCAT 2.0 Reading with a Level 3 or better to graduate.
- You are encouraged to attempt college level coursework and/or industry certification.
- You must take at least one virtual course for graduation. Your school will provide a virtual course before graduation.

ILLNESS

Do not send your child to school if he or she has a rash, fever, eye drainage, severe vomiting or diarrhea, a productive cough, or any symptom that may be an indication of communicable disease. Students with any of these symptoms will be sent home. If your child has any of these symptoms, please notify the school that your child is ill and request a doctor's note so that your child's absence can be excused.

IMMUNIZATION REQUIREMENTS

All student immunizations must be up to date to attend school in St. Lucie County. The immunizations are recorded on a blue DH680 state form which can be obtained through the St. Lucie County Health Department or your doctor's office. All students entering Florida Schools for the first time need to have a DH3040 form which documents a physical exam that has been completed within the last calendar year. For further information, contact the St. Lucie County Health Department at 772/462-3800.

Kindergarten through 12th Grade:

5 doses (DTP) Diphtheria, Tetanus, Pertussis

4 doses Polio vaccine

3 doses Hepatitis B vaccine series (or alternate 2 dose series)

2 doses (MMR) Measles, Mumps, Rubella

2 doses Varicella (required for Kindergarten and 4th grade)

1 dose Varicella (required 5th through 11th only)

7th through 12th Grade

Additional requirements:

1 dose (Tdap) Tetanus-Diphtheria-Pertussis (7th and 10th)

1 dose (Td) Tetanus-Diphtheria (11th through 12th)

IMPORTANT

Sixth (6th) graders must have a Tdap before entering 7th grade. Immunization dates must be turned in to the school clinic on a blue DH680 state form obtained at the time of immunization.

Physical Exam Requirements

Also, any student entering Florida Public schools for the first time must present a School Entry Health Exam (form DH 3040) performed within the last 12 months prior to Enrollment

MEDICATION AT SCHOOL

Do not send medications to school with your child. This practice puts your child, as well as his/her peers, at risk. Should your child require medication while he or she is at school, please contact your school's nurse or health assistant to obtain the appropriate forms. *NOTES WILL NOT BE ACCEPTED AS AUTHORIZATION FOR MEDICATION ADMINISTRATION.*

GETTING INVOLVED

PARENT-TEACHER ORGANIZATIONS (PTO)

Schools also have school wide Parent-Teacher Organizations. PTO provides members with parent education, leadership training, and a powerful voice of advocacy on behalf of all children.

Parents involved with PTOs plan and coordinate learning opportunities, social activities, and fundraising events designed to benefit their children throughout the school year.

SCHOOL ADVISORY COUNCIL (SAC)

Each school must have a School Advisory Council (SAC) that is ethnically, racially, and economically representative of its community. This council is an umbrella group that brings all the stakeholders together to work on improving a school.

Members of the SAC are selected according to procedures established by the school and school board in compliance with the requirements of state statutes. Each SAC is composed of the principal and representatives of teachers, education support employees, parents, community members, and students. High schools must have students on SACs. Student membership on middle schools SACs is optional.

SCHOOL IMPROVEMENT PLANS

At each school, the School Advisory Council develops a plan for improvement, which means creating a plan for the future. Schools need to know where they are, where they want to be, and how they can best get there. The school district has a strategic planning process that helps SACs set goals and establish strategies for reaching those goals. It helps the school, parents, students, and community members create a shared vision and provide each other with support for achieving success.

The district and community provide support for schools as they implement their plans. Most schools will be on track, but the school district will provide support to a school having trouble reaching performance goals. Progress monitoring reports inform teachers, administrators, and parents on student progress. Annual review of student achievement data provides the information for decisions on school improvement plans each year.

THE SCHOOL BOARD OF ST. LUCIE COUNTY

The St. Lucie County School Board sets policies and rules that govern the administration of the school district. The Board operates according to both Florida law and state Department of Education regulations, and sets policy only when members meet in official session. The Board meets twice a month on the second and fourth Tuesday of each month.

VOLUNTEERING AT SCHOOL

Volunteering is a special way to get involved in your child's education. As a volunteer, you can contribute in many ways: accompanying your child's class on field trips, helping as a classroom assistant, or even serving on the School Advisory Council (SAC). Parent volunteers get a close-up view of their child's school. Seeing how your child is taught can also give you ideas on how to help your child at home.

The Parents in Education program matches schools with resources (human and material) through business partnerships to achieve educational excellence. SLCSB is always looking for businesses to join with schools and the district to educate our young people for a better tomorrow.

If you are interested in becoming a volunteer in a school or a business partner, contact the district's volunteer coordinator at 772/429-3963.



We are a *Kids at Hope* district, but not all of our schools are *Kids at Hope* Schools. Currently we have 15 *Kids at Hope* Schools, with four more to be added this year. We have developed a Five Year Strategic Plan that will remedy that deficiency. Each year a set of additional schools will receive training and become *Kids at Hope* Schools. Our goal is that at the conclusion of the plan all schools will be *Kids at Hope* Schools.

The commitment to *Kids at Hope* doesn't end with the staff at each school. In order for us to truly be considered a *Kids at Hope* district, ALL of our employees need to know and practice the *Kids at Hope*

framework. The plan includes training all of the district's employees, including bus drivers, clerical staff, maintenance staff, etc. It is truly a district-wide commitment.

Finally, one of the tools that we will use to gauge the effectiveness of our work with *Kids at Hope* is a student survey. The survey is designed by the Gallup organization and is constructed to measure the impact of the concepts of *Kids at Hope*. This survey is for select grade levels and is conducted annually. There is no cost to participate in the survey. In the past, only *Kids at Hope* Schools participated in the survey. From this point on, ALL of our schools will participate in the survey. This will enable us to yield comparison data.

We are truly a *Kids at Hope* District in a *Kids at Hope* Community. The Round Table of St. Lucie County has been instrumental in creating a *Kids at Hope* Community. They developed the partnerships with local government, law enforcement groups, fire departments and other agencies that have allowed *Kids at Hope* to flourish in our community.

**All children are capable of success
NO EXCEPTIONS!**

Kids at Hope Schools

Allapattah Flats K-8

Bayshore Elementary

C.A. Moore Elementary

Dale Cassens Education Complex

Dan McCarty Middle School

Forest Grove Middle School

Fort Pierce Magnet School of the Arts

Fort Pierce Westwood High School

Lakewood Park Elementary

Manatee Elementary

Oak Hammock K-8

Samuel S. Gaines Academy K-8

Village Green Elementary

Weatherbee Elementary

Windmill Point Elementary

Plans to add the following schools this year:

Ft. Pierce Central High School

Treasure Coast High School

Northport K-8

White City Elementary